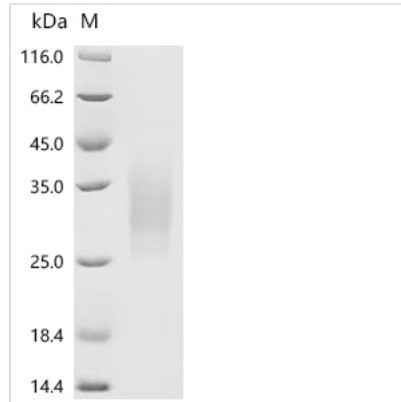




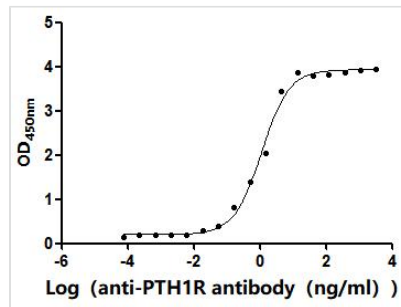
Recombinant *Macaca fascicularis* Parathyroid hormone/parathyroid hormone-related peptide receptor (PTH1R), partial (Active)

Product Code	CSB-MP018988MOV4
Abbreviation	Recombinant <i>Cynomolgus</i> monkey PTH1R protein, partial (Active)
Storage	The shelf life is related to many factors, storage state, buffer ingredients, storage temperature and the stability of the protein itself. Generally, the shelf life of liquid form is 6 months at -20°C/-80°C. The shelf life of lyophilized form is 12 months at -20°C/-80°C.
Uniprot No.	A0A2K5V724
Form	Lyophilized powder
Storage Buffer	Lyophilized from a 0.2 μm filtered PBS, 6% Trehalose, pH 7.4
Product Type	Recombinant Protein
Immunogen Species	<i>Macaca fascicularis</i> (Crab-eating macaque) (<i>Cynomolgus</i> monkey)
Biological Activity	Measured by its binding ability in a functional ELISA. Immobilized <i>Macaca fascicularis</i> PTH1R at 2 μg/mL can bind Anti-PTH1R recombinant antibody (CSB-RA018988MA1HU). The EC50 is 1.072 to 1.403 ng/mL.
Purity	≥ 95% as determined by SDS-PAGE.
Sequence	DDVMTKEEQIFLLHRAQAQCEKRLKEVLQRPANIMESDKGWTSTSTSGKPRK DKPSGKLYPESEEDKEAPTGSRYRGRPCLEWDHILCWPLGAPGEVVAVPCP DYIYDFNHKGHAYRRCDRNGSWELVPGHNRTWANYSECVKFLTNETREREV FDRLG
Source	Mammalian cell
Target Names	PTH1R
Expression Region	29-188aa
Notes	Repeated freezing and thawing is not recommended. Store working aliquots at 4°C for up to one week.
Tag Info	C-terminal 10xHis-tagged
Mol. Weight	20.0 kDa
Protein Length	Partial

Image



(Tris-Glycine gel) Discontinuous SDS-PAGE (reduced) with 5% enrichment gel and 15% separation gel.



Activity

Measured by its binding ability in a functional ELISA. Immobilized *Macaca fascicularis* PTH1R at 2 µg/ml can bind Anti-PTH1R recombinant antibody (CSB-RA018988MA1HU). The EC₅₀ is 1.072 to 1.403 ng/mL.

Endotoxin

Less than 1.0 EU/ug as determined by LAL method.

Reconstitution

We recommend that this vial be briefly centrifuged prior to opening to bring the contents to the bottom. Please reconstitute protein in deionized sterile water to a concentration of 0.1-1.0 mg/mL. We recommend to add 5-50% of glycerol (final concentration) and aliquot for long-term storage at -20°C/-80°C. Our default final concentration of glycerol is 50%. Customers could use it as reference.

Shelf Life

The shelf life is related to many factors, storage state, buffer ingredients, storage temperature and the stability of the protein itself.

Generally, the shelf life of liquid form is 6 months at -20°C/-80°C. The shelf life of lyophilized form is 12 months at -20°C/-80°C.