



Recombinant Human Ectonucleotide pyrophosphatase/phosphodiesterase family member 3 (ENPP3), partial (Active)

Product Code	CSB-MP007681HUb0
Abbreviation	Recombinant Human ENPP3 protein, partial (Active)
Storage	The shelf life is related to many factors, storage state, buffer ingredients, storage temperature and the stability of the protein itself. Generally, the shelf life of liquid form is 6 months at -20°C/-80°C. The shelf life of lyophilized form is 12 months at -20°C/-80°C.
Uniprot No.	O14638
Form	Lyophilized powder
Storage Buffer	Lyophilized from a 0.2 µm filtered 20 mM Tris-HCl, 0.5 M NaCl, 6% Trehalose, pH 8.0
Product Type	Recombinant Protein
Immunogen Species	Homo sapiens (Human)
Biological Activity	Measured by its binding ability in a functional ELISA. Immobilized Human ENPP3 at 2 µg/mL can bind Anti-ENPP3 recombinant antibody (CSB-RA007681MA1HU), the EC50 is 0.5355-1.248 ng/mL.
Purity	Greater than 95% as determined by SDS-PAGE.
Sequence	LEKQGSCRKKCFDASFRGLENCRCDVACKDRGDCCWDFEDTCVESTRIWMC NKFRCGETRLEASLCSCSDDCLQRKDCCADYKSVCCQGETSWLEENCDAQQ SQCPEGFDLPPVILFMSMDGFRAEYLYTWDTLMPNINKLKTGCIHISKYMRAMYP TKTFPNHYTIVTGLYPESHGIIDNNMYDVNLNKNFSLSSKEQNNPAWWHGQP MWLTAMYQGLKAATYFWPGSEVAINGSFPSIYMPYNGSVPFEERISTLLKWLD LPKAERPRFYTMFEEDSSGHAGGPVSARVIKALQVVDHAFGMLMEGLKQR NLHNCVNIILLADHGMDQTYCNKMEYMTDYFPRINFFYMYEGPAPRIRAHNIPH DFFSFNSEEIVRNLSCRKPDQHFKPYLTPDLPKRLHYAKNVRIDKVHFLVDQQ WLAVRSKSNNTNCGGGNHGYNNEFRSMEAIFLAHGSPFKEKTEVEPFENIEVY NLMCDLLRIQPAPNNGTHGSLNHLLKVPFYEPSHAEVSKFSVCGFANPLPTE SLDCFCPHLQNSTQLEQVNQMLNLTQEEITATVKVNLFPGRPRVLQKNVDHCL LYHREYVSGFGKAMRMPMWSSYVTPQLGDTSPLPPTVPDCLRADVRVPPSE SQKCSFYLADKNITHGFLYPPASNRTSDSQYDALITSNLVPMYEEFRKMWDYF HSVLLIKHATERNGVNVVSGPIFDYNYDGHFDAPDEITKHLANTDVPIPTHYFVY LTSCKNKSHTPENCPGWLDVLPFIIPHRPTNVESCEPKPEALWVEERFTAHA RVRDVELLTGLDFYQDKVQPVSEILQLKTYLPTFETTI
Source	Mammalian cell
Target Names	ENPP3
Expression Region	48-875aa



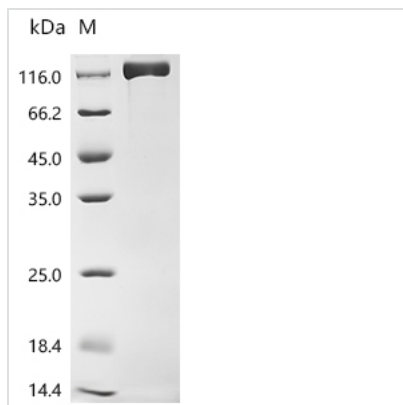
Notes Repeated freezing and thawing is not recommended. Store working aliquots at 4°C for up to one week.

Tag Info N-terminal 10xHis-tagged

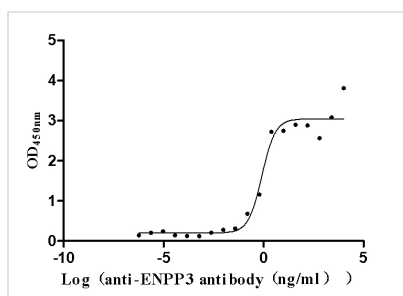
Mol. Weight 98.7 kDa

Protein Length Partial

Image



(Tris-Glycine gel) Discontinuous SDS-PAGE (reduced) with 5% enrichment gel and 15% separation gel.



Activity
Measured by its binding ability in a functional ELISA. Immobilized Human ENPP3 at 2 µg/ml can bind Anti-ENPP3 recombinant antibody (CSB-RA007681MA1HU), the EC₅₀ is 0.5355-1.248 ng/mL.

Endotoxin Less than 1.0 EU/ug as determined by LAL method.

Reconstitution We recommend that this vial be briefly centrifuged prior to opening to bring the contents to the bottom. Please reconstitute protein in deionized sterile water to a concentration of 0.1-1.0 mg/mL. We recommend to add 5-50% of glycerol (final concentration) and aliquot for long-term storage at -20°C/-80°C. Our default final concentration of glycerol is 50%. Customers could use it as reference.

Shelf Life The shelf life is related to many factors, storage state, buffer ingredients, storage temperature and the stability of the protein itself. Generally, the shelf life of liquid form is 6 months at -20°C/-80°C. The shelf life of lyophilized form is 12 months at -20°C/-80°C.