



# Recombinant Human Hepatocyte growth factor receptor (MET), partial (Active)

<b>Product Code</b>	CSB-MP013714HUc7
<b>Abbreviation</b>	Recombinant Human MET protein, partial (Active)
<b>Storage</b>	The shelf life is related to many factors, storage state, buffer ingredients, storage temperature and the stability of the protein itself. Generally, the shelf life of liquid form is 6 months at -20°C/-80°C. The shelf life of lyophilized form is 12 months at -20°C/-80°C.
<b>Uniprot No.</b>	P08581
<b>Form</b>	Lyophilized powder
<b>Storage Buffer</b>	Lyophilized from a 0.2 µm sterile filtered PBS, 6% Trehalose, pH 7.4
<b>Product Type</b>	Recombinant Protein
<b>Immunogen Species</b>	Homo sapiens (Human)
<b>Biological Activity</b>	Measured by its binding ability in a functional ELISA. Immobilized Human MET at 2 µg/mL can bind Anti-MET recombinant antibody(CSB-RA013714MA2HU). The EC50 is 2.271-2.575 ng/mL.
<b>Purity</b>	Greater than 95% as determined by SDS-PAGE. Greater than 95% as determined by SEC-HPLC.
<b>Sequence</b>	<p>           ECKEALAKSEMNVNMKYQLPNFTAETPIQNVILHEHHIFLGATNYIYVLNEEDLQ            KVAEYKTGPVLEHPDCFCQDCSSKANLSGGVWKDNIINMALVVDTYDDQLI            SCGSVNRGTCQRHVFPNHHTADIQSEVHCIFSPQIEEPSQCPDCVVSALGAKV            LSSVKDRFINFFVGNTINSSYFPDHLHSISVRRLKETKDGFMFLTDQSYIDVLP            EFRDSYPIKYVHAFESNNFIYFLTVQRETLDQTFHTRIIRFCSINSGLHSYMEM            PLECILTEKRKKRSTKKEVFNILQAAYVSKPGAQLARQIGASLNDDILFGVFAQS            KPDSAEPMDRSAMCAFPKIYVNDFFNKIVNKNVNRCLQHFYGPNEHCNRT            LLRNSSGCEARRDEYRTEFTTALQRVDLFMGQFSEVLLTSISTFIKGDLTIANLG            TSEGRFMQVVVSRSGPSTPHVNFLLDSHPVSPEVIVEHTLNQNGYTLVITGKKI            TKIPLNGLGCRHFQSCSQCLSAPPFVQCGWCHDKCVRSEECLSGTWTQQICL            PAIYKVFPNSAPLEGGTRLTICGWDFGFRNNKFDLKKTRVLLGNESCTLTLS            STMNTLKCTVGPAMNKHFNMSIIISNGHGTTQYSTFSYVDPVITSISPKYGPMA            GGTLTTLTGNYLNSGNSRHISIGGKTCTLKSVSNSILECYTPAQTISTEFAVKLKI            DLANRETSIFSYPREDPIVYIEIHPTKSFISGGSTITGVGKNLNSVSVPRMVINVHE            AGRNFTVACQHRNSSEIICCTTPSLQQLNLQLPLKTKAFFMLDGILSKYFDLIYV            HNPVFKPFKPMISMGNENVLEIKGNDIDPEAVKGEVLKVGKNSCENIHLHSE            AVLCTVPNDLLKLNSELNIEWKQAISSTVLGKVIVQPDQNFT         </p>
<b>Source</b>	Mammalian cell
<b>Target Names</b>	MET
<b>Expression Region</b>	25-932aa
<b>Notes</b>	Repeated freezing and thawing is not recommended. Store working aliquots at



4°C for up to one week.

**Tag Info**

C-terminal 6xHis-tagged

**Mol. Weight**

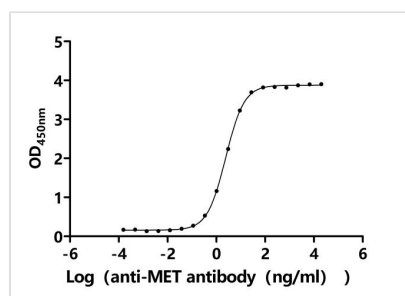
103.9 kDa

**Protein Length**

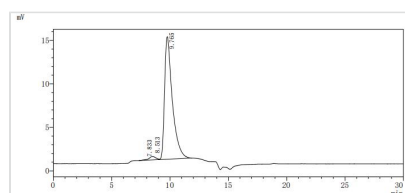
Partial

**Image**


(Tris-Glycine gel) Discontinuous SDS-PAGE (reduced) with 5% enrichment gel and 15% separation gel.


**Activity**

Measured by its binding ability in a functional ELISA. Immobilized Human MET at 2 µg/ml can bind Anti-MET recombinant antibody(CSB-RA013714MA2HU). The EC<sub>50</sub> is 2.271-2.575 ng/mL.



The purity of MET was greater than 95% as determined by SEC-HPLC

**Endotoxin**

Less than 1.0 EU/ug as determined by LAL method.

**Reconstitution**

We recommend that this vial be briefly centrifuged prior to opening to bring the contents to the bottom. Please reconstitute protein in deionized sterile water to a concentration of 0.1-1.0 mg/mL. We recommend to add 5-50% of glycerol (final concentration) and aliquot for long-term storage at -20°C/-80°C. Our default final concentration of glycerol is 50%. Customers could use it as reference.

**Shelf Life**

The shelf life is related to many factors, storage state, buffer ingredients, storage temperature and the stability of the protein itself.

Generally, the shelf life of liquid form is 6 months at -20°C/-80°C. The shelf life of lyophilized form is 12 months at -20°C/-80°C.