

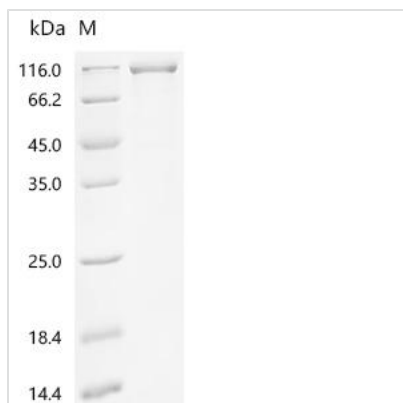


Recombinant Human Protein mono-ADP-ribose transferase PARP14 (PARP14), partial

Product Code	CSB-MP677190HU2
Abbreviation	Recombinant Human PARP14 protein, partial
Storage	The shelf life is related to many factors, storage state, buffer ingredients, storage temperature and the stability of the protein itself. Generally, the shelf life of liquid form is 6 months at -20°C/-80°C. The shelf life of lyophilized form is 12 months at -20°C/-80°C.
Uniprot No.	Q460N5
Form	Liquid or Lyophilized powder
Storage Buffer	If the delivery form is liquid, the default storage buffer is Tris/PBS-based buffer, 5%-50% glycerol. If the delivery form is lyophilized powder, the buffer before lyophilization is Tris/PBS-based buffer, 6% Trehalose, pH 8.0.
Product Type	Recombinant Human Protein mono-ADP-ribose transferase PARP14 (PARP14), partial
Immunogen Species	Homo sapiens (Human)
Sensitivity	Not Test
Purity	≥ 90% as determined by SDS-PAGE.
Sequence	GQKCFsRtVlAPgVvLIVQQGDLARLPVDVvVNASNEDLKHYGGLAAALSKAA GPELQADCDQIVKREGRLLPGNATISKAGKLPYHHVIHAVGPRWSGYEAPRCV YLLRRAVQLSLCLAEKYKYRSIAIPAISGvFGFPLGRCVETIVSAIKENFQFKKD GHCLKEIYLVDVSEKTVEAFAEAVKTVFKATLPDTAAPPGLPPAAAGPGKTSW EKGLVSPGGLQMLLVKEGVQNAKTDVVVNSVPLDLVLSRGPLSKSLLEKAGP ELQEELDTVGQGVAVSMGTVLKTSWNLDCRYVLHVVAPEWRNGSTSSLKIM EDIIRECMEITESLSLKSIAFPAIGTGNLGFpKNIFAELIIESEVFKFSSKNQLKTLQE VHFLHPSDHENIQAFSDEFARRANGNLVSDKIPKAKDTQGfYGTvSSPDSGV YEMKIGSIIFQVASGDITKEEADVIVNSTSNsFNLKAGVSKAILECAGQNVEREC SQQAQRKNDYIITGGGFLRCKNIHVIgGNDVKSSVSSVLQECEKKNYSSICL PAIGTGNAKQHPDKVAEAIIDAIEDFVQKGSaQSVKkVkvVIFLPQVLDVfYAN MKKREGTQLSSQQSVMSK
Research Area	Epigenetics and Nuclear Signaling
Source	Mammalian cell
Target Names	PARP14
Expression Region	789-1400aa
Notes	Repeated freezing and thawing is not recommended. Store working aliquots at 4°C for up to one week.
Tag Info	N-terminal hFc-tagged
Mol. Weight	92.2 kDa

**Protein Length**

Partial

Image

(Tris-Glycine gel) Discontinuous SDS-PAGE (reduced) with 5% enrichment gel and 15% separation gel.

Reconstitution

We recommend that this vial be briefly centrifuged prior to opening to bring the contents to the bottom. Please reconstitute protein in deionized sterile water to a concentration of 0.1-1.0 mg/mL. We recommend to add 5-50% of glycerol (final concentration) and aliquot for long-term storage at -20°C/-80°C. Our default final concentration of glycerol is 50%. Customers could use it as reference.

Shelf Life

The shelf life is related to many factors, storage state, buffer ingredients, storage temperature and the stability of the protein itself. Generally, the shelf life of liquid form is 6 months at -20°C/-80°C. The shelf life of lyophilized form is 12 months at -20°C/-80°C.