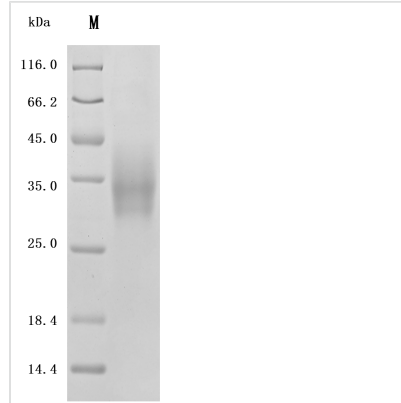


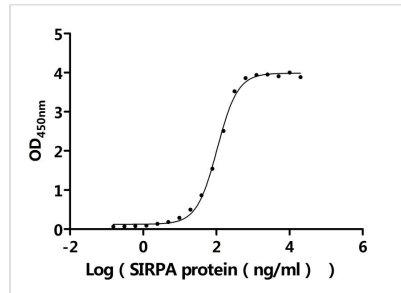


Recombinant Human Leukocyte surface antigen CD47 (CD47), partial (Active)

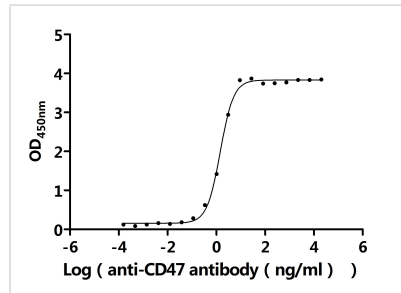
Product Code	CSB-MP004940HUd7
Abbreviation	Recombinant Human CD47 protein, partial (Active)
Storage	The shelf life is related to many factors, storage state, buffer ingredients, storage temperature and the stability of the protein itself. Generally, the shelf life of liquid form is 6 months at -20°C/-80°C. The shelf life of lyophilized form is 12 months at -20°C/-80°C.
Uniprot No.	Q08722
Form	Lyophilized powder
Storage Buffer	Lyophilized from a 0.2 µm filtered PBS, 6% Trehalose, pH 7.4
Product Type	Recombinant Protein
Immunogen Species	Homo sapiens (Human)
Biological Activity	①Measured by its binding ability in a functional ELISA. Immobilized Human CD47 (CSB-MP004940HUd7) at 2 µg/mL can bind Human SIRPA protein. The EC50 is 98.73-112.7 ng/mL.②Measured by its binding ability in a functional ELISA. Immobilized Human CD47 at 2 µg/mL can bind Anti-CD47 recombinant antibody (CSB-RA004940MA1HU). The EC50 is 1.343-1.561 ng/mL.
Sequence	QLLFNKTKSVEFTFCNDTVVIPCFVTNMEAQNTTEVYVKWKFKGRDIYTFDGA LNKSTVPTDFSSAKIEVSQLLKGDASLKMDSKSDAVSHTGNYTCEVTELTREG TIIELKYRVVSWFSP
Source	Mammalian cell
Target Names	CD47
Expression Region	19-139aa
Notes	Repeated freezing and thawing is not recommended. Store working aliquots at 4°C for up to one week.
Tag Info	C-terminal 10xHis-tagged
Mol. Weight	15.1 kDa
Protein Length	Partial
Image	



(Tris-Glycine gel) Discontinuous SDS-PAGE (reduced) with 5% enrichment gel and 15% separation gel.


Activity

① Measured by its binding ability in a functional ELISA. Immobilized Human CD47 (CSB-MP004940HUd7) at 2 μ g/ml can bind Human SIRPA protein. The EC_{50} is 98.73-112.7 ng/mL.


Activity

② Measured by its binding ability in a functional ELISA. Immobilized Human CD47 at 2 μ g/ml can bind Anti-CD47 recombinant antibody (CSB-RA004940MA1HU). The EC_{50} is 1.343-1.561 ng/mL.

Endotoxin

Less than 1.0 EU/ μ g as determined by LAL method.

Reconstitution

We recommend that this vial be briefly centrifuged prior to opening to bring the contents to the bottom. Please reconstitute protein in deionized sterile water to a concentration of 0.1-1.0 mg/mL. We recommend to add 5-50% of glycerol (final concentration) and aliquot for long-term storage at -20°C/-80°C. Our default final concentration of glycerol is 50%. Customers could use it as reference.

Shelf Life

The shelf life is related to many factors, storage state, buffer ingredients, storage temperature and the stability of the protein itself.

Generally, the shelf life of liquid form is 6 months at -20°C/-80°C. The shelf life of lyophilized form is 12 months at -20°C/-80°C.