

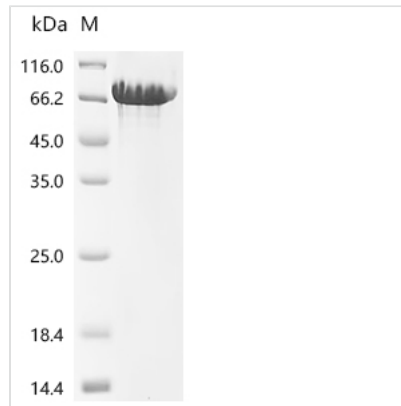


Recombinant *Macaca fascicularis* Cadherin-1 (CDH1), partial (Active)

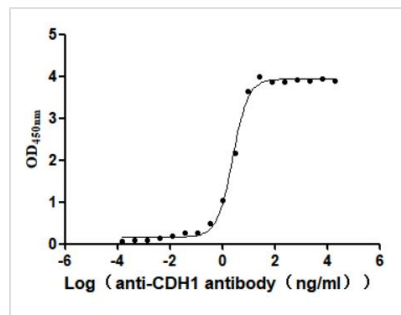
Product Code	CSB-MP5601MOV
Abbreviation	Recombinant Cynomolgus monkey CDH1 protein, partial (Active)
Storage	The shelf life is related to many factors, storage state, buffer ingredients, storage temperature and the stability of the protein itself. Generally, the shelf life of liquid form is 6 months at -20°C/-80°C. The shelf life of lyophilized form is 12 months at -20°C/-80°C.
Uniprot No.	A0A2K5V299
Form	Lyophilized powder
Storage Buffer	Lyophilized from a 0.2 µm filtered PBS, 6% Trehalose, pH 7.4
Product Type	Recombinant Protein
Immunogen Species	<i>Macaca fascicularis</i> (Crab-eating macaque) (Cynomolgus monkey)
Biological Activity	Measured by its binding ability in a functional ELISA. Immobilized Cynomolgus CDH1 at 2 µg/mL can bind Anti-CDH1 recombinant antibody (CSB-RA005034MA2HU). The EC50 is 2.256-2.744 ng/mL.
Purity	Greater than 95% as determined by SDS-PAGE. Greater than 95% as determined by SEC-HPLC.
Sequence	DWVIPPISCPENEKGPFPKNLVQIKSNKDKEGKVFYSITGQGADTPPVGVFIER ETGWLKVTPEPLDRENIATYTLFSHAVSSNGNAVEDPMEILITVTDQNDNKPVFT QEVFKGSVMEGALPGTSVMEVTATDADDDVNTYNAAIAYSILSQDPELPDKNM FTINKNTGVISVTTGLDRESFPMYTLVVQAADLQGEGLSTTATAVITVTDND NPPVFNPPTYKGQVPENQANFVITTLKVTDADAPNTPAWEAVYITLNDNDGQF VVTNPNVTNDGILKTAKGLDFEAKQQYILHVAVTNVAPFEVSLTTSTATVTVDVL DVNEAPIFVPPEKRVEVSEDFGVGQEITSYTAREPDTFMEQKITYRIWRDAAN WLEINPDTGAISTRAELDREDVEHVKNSTYALIIATDNGSPVATGTGTLILLSD VNDNAPIPESRNLFFCERNPKPQVINIIDADLPPNTSPFTAELMHGASANWTIEY NDPTQESIILKPKIALEVGDYKINLKLMDNQKKDQVTTLEVSVCDCEGAAGICK APLVEAGMQIP
Source	Mammalian cell
Target Names	CDH1
Expression Region	155-708aa
Notes	Repeated freezing and thawing is not recommended. Store working aliquots at 4°C for up to one week.
Tag Info	C-terminal 10xHis-tagged
Mol. Weight	61.9 kDa
Protein Length	Partial



Image

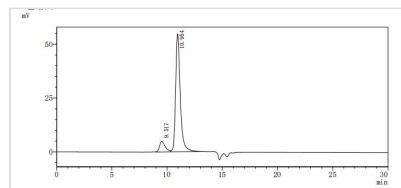


(Tris-Glycine gel) Discontinuous SDS-PAGE (reduced) with 5% enrichment gel and 15% separation gel.



Activity

Measured by its binding ability in a functional ELISA. Immobilized Cynomolgus CDH1 at 2 $\mu\text{g/ml}$ can bind Anti-CDH1 recombinant antibody (CSB-RA005034MA2HU). The EC_{50} is 2.256-2.744 ng/mL.



The purity of CDH1 was greater than 95% as determined by SEC-HPLC

Reconstitution

We recommend that this vial be briefly centrifuged prior to opening to bring the contents to the bottom. Please reconstitute protein in deionized sterile water to a concentration of 0.1-1.0 mg/mL. We recommend to add 5-50% of glycerol (final concentration) and aliquot for long-term storage at $-20^{\circ}\text{C}/-80^{\circ}\text{C}$. Our default final concentration of glycerol is 50%. Customers could use it as reference.

Shelf Life

The shelf life is related to many factors, storage state, buffer ingredients, storage temperature and the stability of the protein itself.

Generally, the shelf life of liquid form is 6 months at $-20^{\circ}\text{C}/-80^{\circ}\text{C}$. The shelf life of lyophilized form is 12 months at $-20^{\circ}\text{C}/-80^{\circ}\text{C}$.