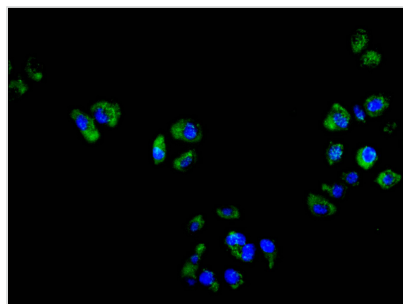




CYBB Recombinant Monoclonal Antibody

| | |
|----------------------------|--|
| Product Code | CSB-RA006325MA1HU |
| Storage | Upon receipt, store at -20°C or -80°C. Avoid repeated freeze. |
| Uniprot No. | P04839 |
| Immunogen | Recombinant Human CYBB protein |
| Species Reactivity | Human |
| Tested Applications | ELISA, IF; Recommended dilution: IF:1:50-1:200 |
| Form | Liquid |
| Conjugate | Non-conjugated |
| Storage Buffer | Preservative: 0.03% Proclin 300 Constituents: 50% Glycerol, 0.01M PBS, PH 7.4 |
| Purification Method | Affinity-chromatography |
| Isotype | mIgG2a |
| Clonality | Monoclonal |
| Product Type | Recombinant Antibody |
| Immunogen Species | Homo sapiens (Human) |
| Research Area | Cancer;Immunology?Metabolism |
| Target Names | CYBB |
| Clone No. | 27A9 |

Image



Immunofluorescence staining of HeLa cell with CSB-RA006325MA1HU at 1:50, counter-stained with DAPI. The cells were fixed in 4% formaldehyde and blocked in 10% normal Goat Serum. The cells were then incubated with the antibody overnight at 4°C. The secondary antibody was FITC-conjugated AffiniPure Goat Anti-Mouse IgG(H+L).

Usage

For Research Use Only. Not for use in diagnostic or therapeutic procedures.