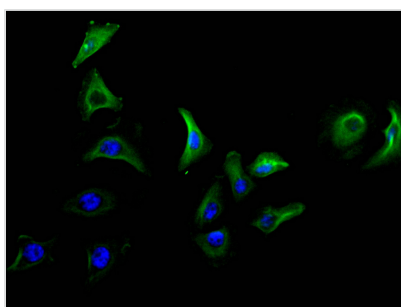




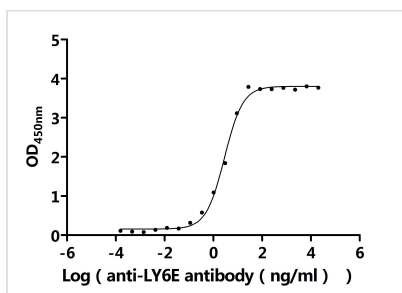
LY6E Recombinant Monoclonal Antibody

Product Code	CSB-RA619076MA1HU
Storage	Upon receipt, store at -20°C or -80°C. Avoid repeated freeze.
Uniprot No.	Q16553
Immunogen	Recombinant Human LY6E protein
Species Reactivity	Human
Tested Applications	ELISA, IF; Recommended dilution: IF:1:50-1:200
Form	Liquid
Conjugate	Non-conjugated
Storage Buffer	Preservative: 0.03% Proclin 300 Constituents: 50% Glycerol, 0.01M PBS, PH 7.4
Purification Method	Affinity-chromatography
Isotype	mIgG2a
Clonality	Monoclonal
Product Type	Recombinant Antibody
Immunogen Species	Homo sapiens (Human)
Research Area	Cell biology
Target Names	LY6E
Clone No.	29C11

Image



Immunofluorescence staining of A549 cell with CSB-RA619076MA1HU at 1:50, counter-stained with DAPI. The cells were fixed in 4% formaldehyde and blocked in 10% normal Goat Serum. The cells were then incubated with the antibody overnight at 4C. The secondary antibody was FITC-conjugated AffiniPure Goat Anti-Mouse IgG(H+L).



The Binding Activity of Human LY6E with Anti-LY6E recombinant antibody
Activity: Measured by its binding ability in a functional ELISA. Immobilized Human LY6E protein (CSB-MP619076HU) at 2 µg/mL can bind Anti-LY6E recombinant antibody. The EC₅₀ is 2.483-3.282 ng/mL.

Usage

For Research Use Only. Not for use in diagnostic or therapeutic procedures.