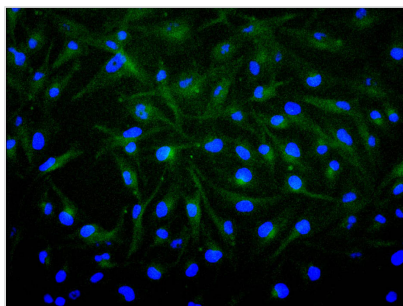




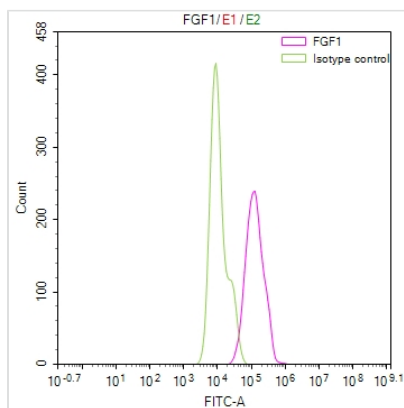
# FGF1 Recombinant Monoclonal Antibody

|                            |  |
|----------------------------|--|
| <b>Product Code</b>        | CSB-RA008615MA1HU  |
| <b>Storage</b>             | Upon receipt, store at -20°C or -80°C. Avoid repeated freeze.                    |
| <b>Uniprot No.</b>         | P05230   |
| <b>Immunogen</b>           | Recombinant Human FGF1 protein   |
| <b>Species Reactivity</b>  | Human  |
| <b>Tested Applications</b> | ELISA, IF, FC; Recommended dilution: IF:1:50-1:200, FC:1:50-1:200                |
| <b>Form</b>                | Liquid   |
| <b>Conjugate</b>           | Non-conjugated   |
| <b>Storage Buffer</b>      | Preservative: 0.03% Proclin 300<br>Constituents: 50% Glycerol, 0.01M PBS, PH 7.4 |
| <b>Purification Method</b> | Affinity-chromatography  |
| <b>Isotype</b>             | mIgG2a   |
| <b>Clonality</b>           | Monoclonal   |
| <b>Product Type</b>        | Recombinant Antibody   |
| <b>Immunogen Species</b>   | Homo sapiens (Human)   |
| <b>Research Area</b>       | Neuroscience?Cancer?Cardiovascular;Signal transduction                           |
| <b>Target Names</b>        | FGF1   |
| <b>Clone No.</b>           | 23H4   |

## Image



Immunofluorescence staining of U251 cell with CSB-RA008615MA1HU at 1:200, counter-stained with DAPI. The cells were fixed in 4% formaldehyde and blocked in 10% normal Goat Serum. The cells were then incubated with the antibody overnight at 4°C. The secondary antibody was FITC-conjugated AffiniPure Goat Anti-Mouse IgG(H+L).



Overlay Peak curve showing PC-3 cells stained with CSB-RA008615MA1HU (red line) at 1:200. The cells were fixed in 4% formaldehyde and permeated by 0.2% TritonX-100. Then 10% normal goat serum to block non-specific protein-protein interactions followed by the antibody (1ug/1\*10<sup>6</sup>cells) for 45min at 4°C. The secondary antibody used was FITC-conjugated Goat Anti-Mouse IgG(H+L) at 1:200 dilution for 35min at 4°C. Control antibody (green line) was mouse IgG (1ug/1\*10<sup>6</sup>cells) used under the same conditions. Acquisition of >10,000 events was performed.



---

**Usage**

For Research Use Only. Not for use in diagnostic or therapeutic procedures.