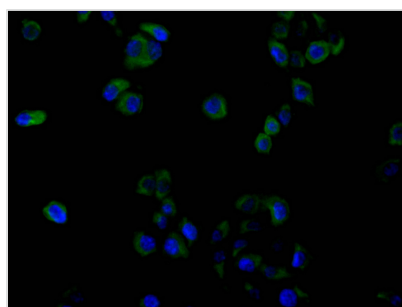




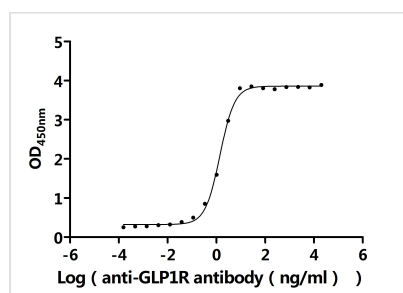
GLP1R Recombinant Monoclonal Antibody

Product Code	CSB-RA009514MA2HU
Storage	Upon receipt, store at -20°C or -80°C. Avoid repeated freeze.
Uniprot No.	P43220
Immunogen	Recombinant Human GLP1R protein
Species Reactivity	Human, Rat, Macaca fascicularis
Tested Applications	ELISA, IF; Recommended dilution: IF:1:50-1:200
Form	Liquid
Conjugate	Non-conjugated
Storage Buffer	Preservative: 0.03% Proclin 300 Constituents: 50% Glycerol, 0.01M PBS, PH 7.4
Purification Method	Affinity-chromatography
Isotype	hIgG1
Clonality	Monoclonal
Product Type	Recombinant Antibody
Immunogen Species	Homo sapiens (Human)
Research Area	Neuroscience;Cardiovascular;Metabolism
Target Names	GLP1R
Clone No.	27A10

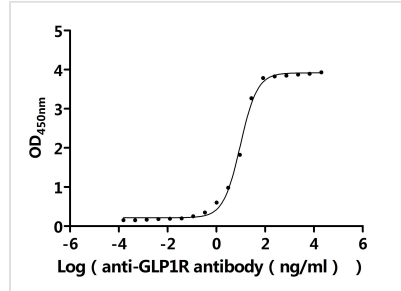
Image



Immunofluorescence staining of HeLa cell with CSB-RA009514MA2HU at 1:30, counter-stained with DAPI. The cells were fixed in 4% formaldehyde and blocked in 10% normal Goat Serum. The cells were then incubated with the antibody overnight at 4C. The secondary antibody was FITC-conjugated AffiniPure Goat Anti-Human IgG(H+L).



The Binding Activity of Macaca fascicularis GLP1R with Anti-GLP1R Recombinant Antibody Activity: Measured by its binding ability in a functional ELISA. Immobilized Macaca fascicularis GLP1R (CSB-MP4826MOV) at 2 µg/mL can bind Anti-GLP1R recombinant antibody. The EC₅₀ is 1.292-1.518 ng/mL.



The Binding Activity of Rat Glp1r with Anti-GLP1R Recombinant Antibody
Activity: Measured by its binding ability in a functional ELISA. Immobilized Rat Glp1r (CSB-MP009514RA2) at 2 μ g/mL can bind Anti-GLP1R recombinant antibody. The EC₅₀ is 8.630-10.66 ng/mL.

Usage

For Research Use Only. Not for use in diagnostic or therapeutic procedures.