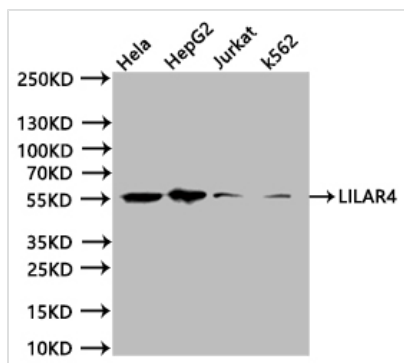




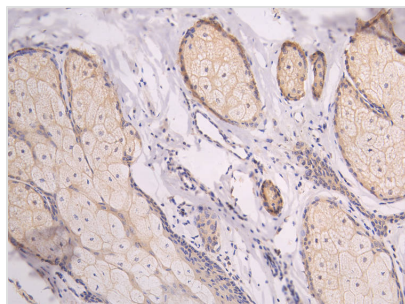
LILRA4 Recombinant Monoclonal Antibody

Product Code	CSB-RA012936MA1HU
Storage	Upon receipt, store at -20°C or -80°C. Avoid repeated freeze.
Uniprot No.	P59901
Immunogen	Recombinant Human LILRA4 protein
Species Reactivity	Human
Tested Applications	ELISA, WB, IHC; Recommended dilution: WB:1:500-1:2000, IHC:1:50-1:200
Form	Liquid
Conjugate	Non-conjugated
Storage Buffer	Preservative: 0.03% Proclin 300 Constituents: 50% Glycerol, 0.01M PBS, PH 7.4
Purification Method	Affinity-chromatography
Isotype	hIgG1
Clonality	Monoclonal
Product Type	Recombinant Antibody
Immunogen Species	Homo sapiens (Human)
Research Area	Immunology
Target Names	LILRA4
Clone No.	24F6

Image



Western Blot Positive WB detected in:HeLa whole cell lysate (20µg), HpeG2 whole cell lysate (20µg), Jurkat whole cell lysate (20µg), K562 whole cell lysate (20µg) All lanes: LILRA4 antibody at 1:1000 Secondary Goat polyclonal to human IgG at 1/40000 dilution Predicted band size:55.18, 47.81 kDa Observed band size:50 kDa Exposure time:20s



IHC image of CSB-RA012936MA1HU diluted at 1:100 and staining in paraffin-embedded human skin tissue performed on a Leica Bond™ system. After dewaxing and hydration, antigen retrieval was mediated by high pressure in a citrate buffer (pH 6.0). Section was blocked with 10% normal goat serum 30min at RT. Then primary antibody (1% BSA) was incubated at 4°C overnight. The primary is detected by a Goat anti-human polymer IgG labeled by HRP and visualized using 0.05% DAB.



Usage

For Research Use Only. Not for use in diagnostic or therapeutic procedures.