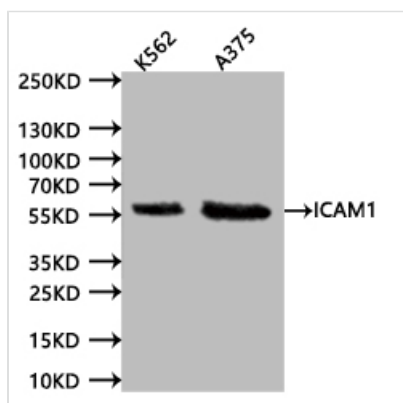




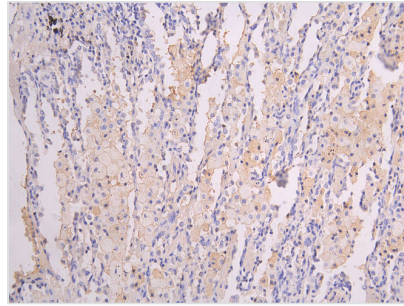
ICAM1 Recombinant Monoclonal Antibody

Product Code	CSB-RA010949MA1HU
Storage	Upon receipt, store at -20°C or -80°C. Avoid repeated freeze.
Uniprot No.	P05362
Immunogen	Recombinant Human ICAM1 protein
Species Reactivity	Human
Tested Applications	ELISA, WB, IHC, FC; Recommended dilution: WB:1:500-1:2000, IHC:1:50-1:200, FC:1:50-1:200
Form	Liquid
Conjugate	Non-conjugated
Storage Buffer	Preservative: 0.03% Proclin 300 Constituents: 50% Glycerol, 0.01M PBS, PH 7.4
Purification Method	Affinity-chromatography
Isotype	hIgG1
Clonality	Monoclonal
Product Type	Recombinant Antibody
Immunogen Species	Homo sapiens (Human)
Research Area	Cardiovascular;Immunology;Stem cells
Target Names	ICAM1
Clone No.	15A9

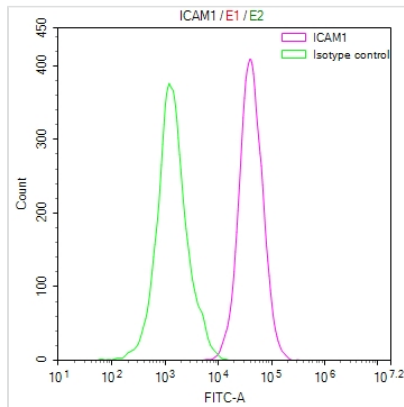
Image



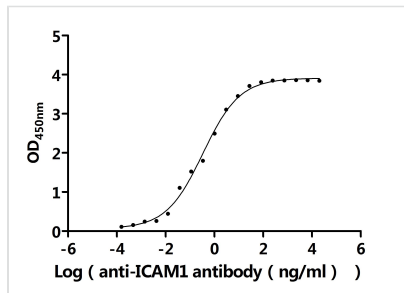
Western Blot Positive WB detected in:K562 whole cell lysate (20µg), A375 whole cell lysate (20µg) All lanes: ICAM1 antibody at 1:1000 Secondary Goat polyclonal to human IgG at 1/40000 dilution Predicted band size:57.83 kDa Observed band size:58 kDa Exposure time:120s



IHC image of CSB-RA010949MA1HU diluted at 1:200 and staining in paraffin-embedded human lung tissue performed on a Leica Bond™ system. After dewaxing and hydration, antigen retrieval was mediated by high pressure in a citrate buffer (pH 6.0). Section was blocked with 10% normal goat serum 30min at RT. Then primary antibody (1% BSA) was incubated at 4°C overnight. The primary is detected by a Goat anti-human polymer IgG labeled by HRP and visualized using 0.05% DAB.



Overlay Peak curve showing HepG2 cells stained with CSB-RA010949MA1HU (red line) at 1:100. Then 10% normal goat serum to block non-specific protein-protein interactions followed by the antibody (1ug/1*10⁶cells) for 45min at 4°C. The secondary antibody used was FITC-conjugated Goat Anti-human IgG(H+L) at 1:200 dilution for 35min at 4°C. Control antibody (green line) was human IgG (1ug/1*10⁶cells) used under the same conditions. Acquisition of >10,000 events was performed.



The Binding Activity of Human ICAM1 with Anti-ICAM1 Recombinant Antibody Activity: Measured by its binding ability in a functional ELISA. Immobilized Human ICAM1 (CSB-MP010949HU) at 2 µg/mL can bind Anti-ICAM1 recombinant antibody. The EC₅₀ is 0.2350-0.4911 ng/mL.

Usage

For Research Use Only. Not for use in diagnostic or therapeutic procedures.