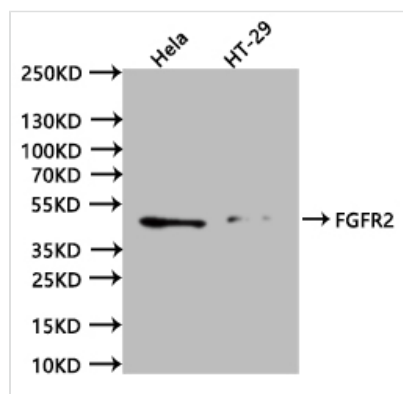




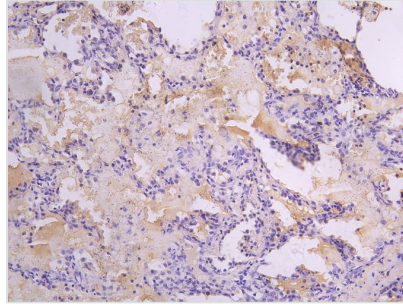
# FGFR2 Recombinant Monoclonal Antibody

<b>Product Code</b>	CSB-RA008645MA1HU
<b>Storage</b>	Upon receipt, store at -20°C or -80°C. Avoid repeated freeze.
<b>Uniprot No.</b>	P21802
<b>Immunogen</b>	Recombinant Human FGFR2 protein
<b>Species Reactivity</b>	Human
<b>Tested Applications</b>	ELISA, WB, IHC; Recommended dilution: WB:1:500-1:2000, IHC:1:50-1:200
<b>Form</b>	Liquid
<b>Conjugate</b>	Non-conjugated
<b>Storage Buffer</b>	Preservative: 0.03% Proclin 300 Constituents: 50% Glycerol, 0.01M PBS, PH 7.4
<b>Purification Method</b>	Affinity-chromatography
<b>Isotype</b>	hIgG1
<b>Clonality</b>	Monoclonal
<b>Product Type</b>	Recombinant Antibody
<b>Immunogen Species</b>	Homo sapiens (Human)
<b>Research Area</b>	Neuroscience?Cancer?Cardiovascular;Developmental biology;Signal transduction?Stem cells
<b>Target Names</b>	FGFR2
<b>Clone No.</b>	18D12

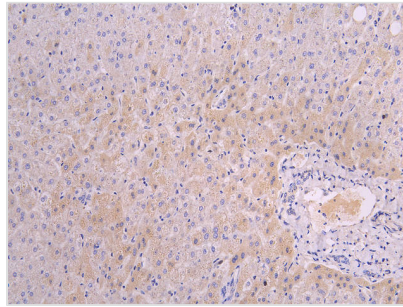
## Image



Western Blot Positive WB detected in:hela whole cell lysate (20µg), HT29 whole cell lysate (20µg)  
All lanes: FGFR2 antibody at 1:1000 Secondary Goat polyclonal to human IgG at 1/40000 dilution  
Predicted band size:92.03, 86.13, 76.70, 28.29, 40.61, 79 kDa Observed band size:41 kDa  
Exposure time:120s



IHC image of CSB-RA008645MA1HU diluted at 1:100 and staining in paraffin-embedded ?? performed on a Leica Bond™ system. After dewaxing and hydration, antigen retrieval was mediated by high pressure in a citrate buffer (pH 6.0). Section was blocked with 10% normal goat serum 30min at RT. Then primary antibody (1% BSA) was incubated at 4°C overnight. The primary is detected by a Goat anti-human polymer IgG labeled by HRP and visualized using 0.05% DAB.



IHC image of CSB-RA008645MA1HU diluted at 1:100 and staining in paraffin-embedded human liver tissue performed on a Leica Bond™ system. After dewaxing and hydration, antigen retrieval was mediated by high pressure in a citrate buffer (pH 6.0). Section was blocked with 10% normal goat serum 30min at RT. Then primary antibody (1% BSA) was incubated at 4°C overnight. The primary is detected by a Goat anti-human polymer IgG labeled by HRP and visualized using 0.05% DAB.

**Usage**

For Research Use Only. Not for use in diagnostic or therapeutic procedures.