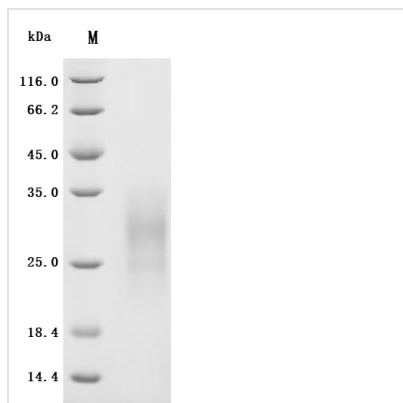




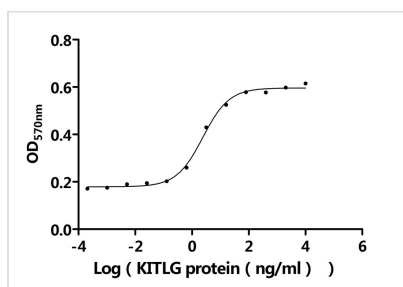
Recombinant Human Kit ligand (KITLG), partial (Active)

Product Code	CSB-MP002061HU1
Abbreviation	Recombinant Human KITLG protein, partial (Active)
Storage	The shelf life is related to many factors, storage state, buffer ingredients, storage temperature and the stability of the protein itself. Generally, the shelf life of liquid form is 6 months at -20°C/-80°C. The shelf life of lyophilized form is 12 months at -20°C/-80°C.
Uniprot No.	P21583
Form	Lyophilized powder
Storage Buffer	Lyophilized from a 0.2 µm filtered PBS, 6% Trehalose, pH 7.4
Product Type	Recombinant Protein
Immunogen Species	Homo sapiens (Human)
Biological Activity	The ED50 as determined by the dose-dependent stimulation of the proliferation of MO7e cells is 1.813-3.203 ng/mL.
Purity	Greater than 95% as determined by SDS-PAGE. Greater than 95% as determined by SEC-HPLC.
Sequence	EGICRNRVTNNVKDVTKLVANLPKDYMITLKYVPGMDVLP SHCWISEM VVQLS DSLTDLLDKFSNISEGLSNYSIIDKLVNIVDDLVECVKENS SKDLKKSFKSPEPRL FTPEEFFRIFNRSIDAFKDFVVA SETSDCVVSSTLSPEKDSRVSVTKPFMLPPV A
Source	Mammalian cell
Target Names	KITLG
Expression Region	26-189aa
Notes	Repeated freezing and thawing is not recommended. Store working aliquots at 4°C for up to one week.
Tag Info	C-terminal 10xHis-tagged
Mol. Weight	19.8 kDa
Protein Length	Partial

Image

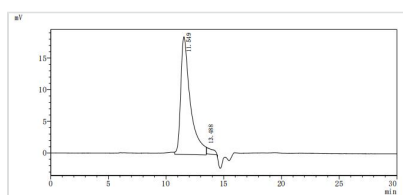


(Tris-Glycine gel) Discontinuous SDS-PAGE (reduced) with 5% enrichment gel and 15% separation gel.



Activity

The ED₅₀ as determined by the dose-dependent stimulation of the proliferation of MO7e cells is 1.813-3.203 ng/mL.



The purity of KITLG was greater than 95% as determined by SEC-HPLC

Reconstitution

We recommend that this vial be briefly centrifuged prior to opening to bring the contents to the bottom. Please reconstitute protein in deionized sterile water to a concentration of 0.1-1.0 mg/mL. We recommend to add 5-50% of glycerol (final concentration) and aliquot for long-term storage at -20°C/-80°C. Our default final concentration of glycerol is 50%. Customers could use it as reference.

Shelf Life

The shelf life is related to many factors, storage state, buffer ingredients, storage temperature and the stability of the protein itself.

Generally, the shelf life of liquid form is 6 months at -20°C/-80°C. The shelf life of lyophilized form is 12 months at -20°C/-80°C.