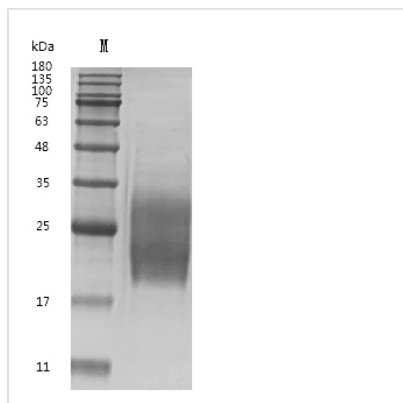




# Recombinant Human Granulocyte-macrophage colony-stimulating factor (CSF2) (Active)

<b>Product Code</b>	CSB-MP006045HU-WD
<b>Abbreviation</b>	Recombinant Human GM-CSF protein (Active)
<b>Storage</b>	The shelf life is related to many factors, storage state, buffer ingredients, storage temperature and the stability of the protein itself. Generally, the shelf life of liquid form is 6 months at -20°C/-80°C. The shelf life of lyophilized form is 12 months at -20°C/-80°C.
<b>Uniprot No.</b>	P04141
<b>Form</b>	Lyophilized
<b>Storage Buffer</b>	Lyophilized from a 0.2 µm filtered solution containing PBS, 5% mannitol and 0.01% Tween 80, pH 7.4
<b>Product Type</b>	Recombinant Protein
<b>Immunogen Species</b>	Homo sapiens (Human)
<b>Biological Activity</b>	Measured in a cell proliferation assay using TF-1 cells. The ED50 for this effect is ≤0.2 ng/mL.
<b>Purity</b>	≥ 95% as determined by SDS-PAGE.
<b>Sequence</b>	APARSPSPSTQPWEHVNAIQEARRLLNLSRDTAEMNETVEVISEMFDLQEP CLQTRLELYKQGLRGLSLTKLKGPLTMMASHYKQHCPPTPETSCATQIITFESFK ENLKDFLLVIPFDCWEPVQE
<b>Source</b>	Mammalian cell
<b>Target Names</b>	GM-CSF
<b>Expression Region</b>	18-144aa
<b>Notes</b>	Repeated freezing and thawing is not recommended. Store working aliquots at 4°C for up to one week.
<b>Tag Info</b>	Tag free
<b>Mol. Weight</b>	14.5 kDa
<b>Protein Length</b>	Full Length of Mature Protein

Image



(Tris-Glycine gel) Discontinuous SDS-PAGE (reduced) with 5% enrichment gel and 15% separation gel.

**Endotoxin**

≤10 EU/mg by the LAL method

**Reconstitution**

We recommend that this vial be briefly centrifuged prior to opening to bring the contents to the bottom. Please reconstitute protein in deionized sterile water to a concentration of 0.1-1.0 mg/mL. We recommend to add 5-50% of glycerol (final concentration) and aliquot for long-term storage at -20°C/-80°C. Our default final concentration of glycerol is 50%. Customers could use it as reference.

**Shelf Life**

The shelf life is related to many factors, storage state, buffer ingredients, storage temperature and the stability of the protein itself. Generally, the shelf life of liquid form is 6 months at -20°C/-80°C. The shelf life of lyophilized form is 12 months at -20°C/-80°C.