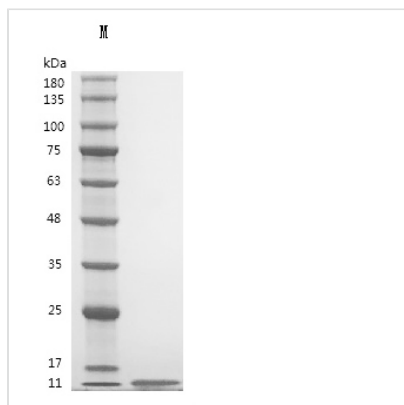




# Recombinant Human Insulin (INS), partial

<b>Product Code</b>	CSB-YP011742HU-WD
<b>Abbreviation</b>	Recombinant Human Insulin protein, partial
<b>Storage</b>	The shelf life is related to many factors, storage state, buffer ingredients, storage temperature and the stability of the protein itself. Generally, the shelf life of liquid form is 6 months at -20°C/-80°C. The shelf life of lyophilized form is 12 months at -20°C/-80°C.
<b>Uniprot No.</b>	P01308
<b>Form</b>	Lyophilized
<b>Storage Buffer</b>	Lyophilized from a 0.2 μm filtered solution(It is recommended to redissolve in sterile 0.01 M HCl at a concentration of not less than 1mg/mL.)
<b>Product Type</b>	Recombinant Protein
<b>Immunogen Species</b>	Homo sapiens (Human)
<b>Purity</b>	Greater than 95% as determined by SDS-PAGE.
<b>Sequence</b>	GIVEQCCTSICSLYQLENYCN&FVNQHLCGSHLVEALYLVCGERGFFYTPKT
<b>Source</b>	Yeast
<b>Target Names</b>	Insulin
<b>Expression Region</b>	25-54aa&90-110aa
<b>Notes</b>	Repeated freezing and thawing is not recommended. Store working aliquots at 4°C for up to one week.
<b>Tag Info</b>	Tag free
<b>Mol. Weight</b>	5.8kd
<b>Protein Length</b>	Partial

## Image



(Tris-Glycine gel) Discontinuous SDS-PAGE (reduced) with 5% enrichment gel and 15% separation gel.

<b>Endotoxin</b>	≤20 EU/mg by the LAL method
<b>Reconstitution</b>	We recommend that this vial be briefly centrifuged prior to opening to bring the contents to the bottom. It is recommended to redissolve in sterile 0.01 M HCl at



a concentration of not less than 1mg/mL. We recommend to add 5-50% of glycerol (final concentration) and aliquot for long-term storage at -20°C/-80°C. Our default final concentration of glycerol is 50%. Customers could use it as reference.

---

**Shelf Life**

The shelf life is related to many factors, storage state, buffer ingredients, storage temperature and the stability of the protein itself.

Generally, the shelf life of liquid form is 6 months at -20°C/-80°C. The shelf life of lyophilized form is 12 months at -20°C/-80°C.