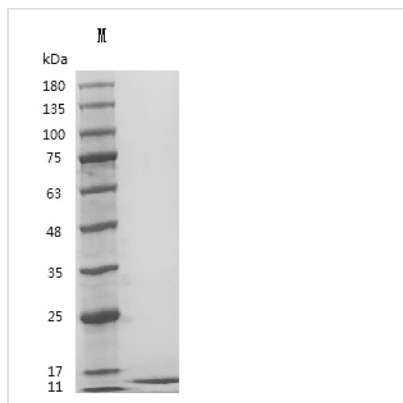




Recombinant Human Insulin-like growth factor I (IGF1) (E51R) (Active)

Product Code	CSB-MP356436HU-WD
Abbreviation	Recombinant Human IGF1 protein (E51R) (Active)
Storage	The shelf life is related to many factors, storage state, buffer ingredients, storage temperature and the stability of the protein itself. Generally, the shelf life of liquid form is 6 months at -20°C/-80°C. The shelf life of lyophilized form is 12 months at -20°C/-80°C.
Uniprot No.	P05019
Form	Lyophilized
Storage Buffer	Lyophilized from a 0.2 µm filtered solution containing PBS, 5% mannitol and 0.01% Tween 80, pH 7.4
Product Type	Recombinant Protein
Immunogen Species	Homo sapiens (Human)
Biological Activity	Measured in a serum-free cell proliferation assay using MCF-7 human breast cancer cells. The ED50 for this effect ≤1.5 ng/mL.
Purity	Greater than 95% as determined by SDS-PAGE.
Sequence	GPETLCGAELVDALQFVCGDRGFYFNKPTGYGSSRRAPQTGIVDECCFRSC DLRRLEMYCAPLKPAKSA
Source	Mammalian cell
Target Names	LR3 IGF1
Expression Region	MFPAMPLSSLFVN+49-118aa(E51R)
Notes	Repeated freezing and thawing is not recommended. Store working aliquots at 4°C for up to one week.
Tag Info	Tag free
Mol. Weight	9.0 kDa
Protein Length	Full Length of Mature Protein
Image	



(Tris-Glycine gel) Discontinuous SDS-PAGE (reduced) with 5% enrichment gel and 15% separation gel.

Endotoxin

≤10 EU/mg by the LAL method

Reconstitution

We recommend that this vial be briefly centrifuged prior to opening to bring the contents to the bottom. Please reconstitute protein in deionized sterile water to a concentration of 0.1-1.0 mg/mL. We recommend to add 5-50% of glycerol (final concentration) and aliquot for long-term storage at -20°C/-80°C. Our default final concentration of glycerol is 50%. Customers could use it as reference.

Shelf Life

The shelf life is related to many factors, storage state, buffer ingredients, storage temperature and the stability of the protein itself. Generally, the shelf life of liquid form is 6 months at -20°C/-80°C. The shelf life of lyophilized form is 12 months at -20°C/-80°C.