



Recombinant Human E3 ubiquitin-protein ligase COP1 (COP1)

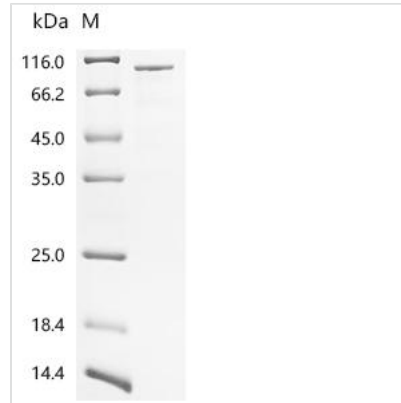
Product Code	CSB-EP822821HU
Abbreviation	Recombinant Human COP1 protein
Storage	The shelf life is related to many factors, storage state, buffer ingredients, storage temperature and the stability of the protein itself. Generally, the shelf life of liquid form is 6 months at -20°C/-80°C. The shelf life of lyophilized form is 12 months at -20°C/-80°C.
Uniprot No.	Q8NHY2
Form	Liquid or Lyophilized powder
Storage Buffer	If the delivery form is liquid, the default storage buffer is Tris/PBS-based buffer, 5%-50% glycerol. If the delivery form is lyophilized powder, the buffer before lyophilization is Tris/PBS-based buffer, 6% Trehalose, pH 8.0.
Product Type	Recombinant Human E3 ubiquitin-protein ligase COP1 (COP1)
Immunogen Species	Homo sapiens (Human)
Sensitivity	Not Test
Purity	Greater than 85% as determined by SDS-PAGE.
Sequence	MSGSRQAGSGSAGTSPGSSAASSVTSASSSLSSSPSPPSVAVSAAALVSGGV AQAAGSGGLGGPVRPVLVAPAVSGSGGGAVSTGLSRHS CAARPSAGVGGSS SSLGSGSRKRPLLAPLCNGLINSYEDKS NDFVCPICFDMIEEAYMTKCGHSFC YKCIHQSL EDNNRCPKCN YVVDNIDHLYPNFLVNELILKQKQRFEEKRFKLDHS VSSTNGHRWQIFQDWLGT DQDNLDLANVNLMLLELLVQKKKQLEAESHA AQLQ ILMEFLK VARRNKREQL EQIKELSVLEEDIKRVEEMSGLYSPVSEDSTVPQFE APSPSHSSIIDSTEYSQPPGFSGSSQTKKQPWYNSTLASRRKRLTAHFEDLEQ CYFSTRMSRISDDSR T ASQLDEFQECLSKFTRYNSVRPLATLSYASDLYNGSSI VSSIEFDRDCDYFAIAGVT K KIKVY EYDTVIQDAVDIHYPENEMTCNSKISCISW SSYHKNLLASSDYEGTVILWDGFTGQR SKVYQEHEKRCWSVDFNLMDPKLLA SGSDDAKVKLWSTNLDNSVASIEAKANVCCVKFSPSSRYHLAFGCADHCVHY YDLRNTKQPIMVFKGHRKAVSYAKFVSGEEIVSASTDSQLKLWNVVGKPYCLRS FKGHINEKNFVGLASNGDYIACGSENNSLYLYYKGLSKTLLTFKFDTVKSVLDK DRKEDDTNEFVSAVCWRALPDGESNVLIAANSQGTIKVLELV
Research Area	Cell Biology
Source	E.coli
Target Names	COP1
Expression Region	1-731aa
Notes	Repeated freezing and thawing is not recommended. Store working aliquots at 4°C for up to one week.
Tag Info	N-terminal 10xHis-tagged and C-terminal Myc-tagged



Mol. Weight 87.9 kDa

Protein Length Full Length

Image



(Tris-Glycine gel) Discontinuous SDS-PAGE (reduced) with 5% enrichment gel and 15% separation gel.

Reconstitution

We recommend that this vial be briefly centrifuged prior to opening to bring the contents to the bottom. Please reconstitute protein in deionized sterile water to a concentration of 0.1-1.0 mg/mL. We recommend to add 5-50% of glycerol (final concentration) and aliquot for long-term storage at -20°C/-80°C. Our default final concentration of glycerol is 50%. Customers could use it as reference.

Shelf Life

The shelf life is related to many factors, storage state, buffer ingredients, storage temperature and the stability of the protein itself. Generally, the shelf life of liquid form is 6 months at -20°C/-80°C. The shelf life of lyophilized form is 12 months at -20°C/-80°C.