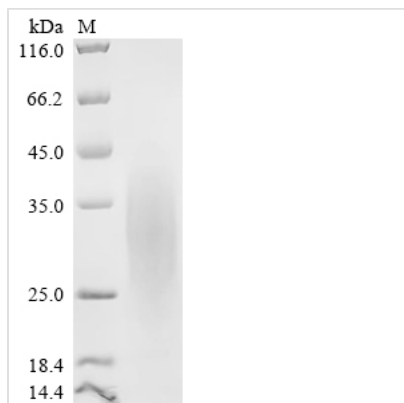


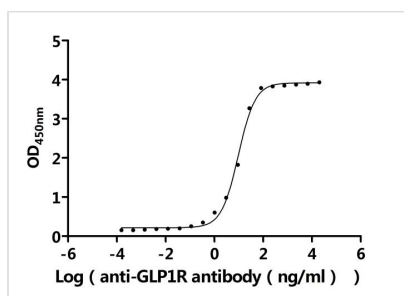


Recombinant Rat Glucagon-like peptide 1 receptor (Glp1r), partial (Active)

Product Code	CSB-MP009514RA2
Abbreviation	Recombinant Rat Glp1r protein, partial (Active)
Storage	The shelf life is related to many factors, storage state, buffer ingredients, storage temperature and the stability of the protein itself. Generally, the shelf life of liquid form is 6 months at -20°C/-80°C. The shelf life of lyophilized form is 12 months at -20°C/-80°C.
Uniprot No.	P32301
Form	Lyophilized powder
Storage Buffer	Lyophilized from a 0.2 µm sterile filtered PBS, 6% Trehalose, pH 7.4
Product Type	Recombinant Protein
Immunogen Species	Rattus norvegicus (Rat)
Biological Activity	Measured by its binding ability in a functional ELISA. Immobilized Rat Glp1r at 2 µg/mL can bind Anti-GLP1R recombinant antibody (CSB-RA009514MA2HU). The EC50 is 8.630-10.66 ng/mL.
Purity	≥ 90% as determined by SDS-PAGE.
Sequence	GPRPQGATVSLSETVQKWREYRHQCQRFLTEAPLLATGLFCNRTFDDYACW PDGPPGSFVNVSCPWYLPWASSVLQGHVYRFCTAEGIWHLHKDNSSLPWRDL SECEESKQGERNSPEE
Source	Mammalian cell
Target Names	Glp1r
Expression Region	22-139aa
Notes	Repeated freezing and thawing is not recommended. Store working aliquots at 4°C for up to one week.
Tag Info	C-terminal 10xHis-tagged
Mol. Weight	14.9 kDa
Protein Length	Partial
Image	



(Tris-Glycine gel) Discontinuous SDS-PAGE (reduced) with 5% enrichment gel and 15% separation gel.



Activity

Measured by its binding ability in a functional ELISA. Immobilized Rat Glp1r at 2 µg/ml can bind Anti-GLP1R recombinant antibody (CSB-RA009514MA2HU). The EC₅₀ is 8.630-10.66 ng/mL.

Endotoxin

Less than 1.0 EU/ug as determined by LAL method.

Reconstitution

We recommend that this vial be briefly centrifuged prior to opening to bring the contents to the bottom. Please reconstitute protein in deionized sterile water to a concentration of 0.1-1.0 mg/mL. We recommend to add 5-50% of glycerol (final concentration) and aliquot for long-term storage at -20°C/-80°C. Our default final concentration of glycerol is 50%. Customers could use it as reference.

Shelf Life

The shelf life is related to many factors, storage state, buffer ingredients, storage temperature and the stability of the protein itself.

Generally, the shelf life of liquid form is 6 months at -20°C/-80°C. The shelf life of lyophilized form is 12 months at -20°C/-80°C.