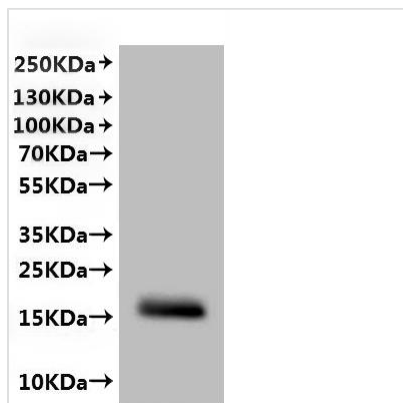


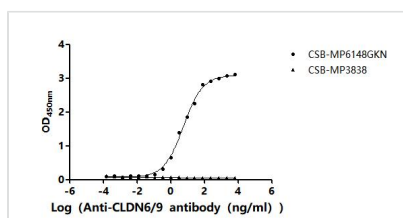


Recombinant Chlorocebus sabaesus Claudin (CLDN6)-VLPs (Active)

Product Code	CSB-MP6148GKN
Abbreviation	Recombinant Chlorocebus sabaesus CLDN6 protein-VLPs (Active)
Storage	The shelf life is related to many factors, storage state, buffer ingredients, storage temperature and the stability of the protein itself. Generally, the shelf life of liquid form is 6 months at -20°C/-80°C. The shelf life of lyophilized form is 12 months at -20°C/-80°C.
Uniprot No.	A0A0D9SBX5
Form	Lyophilized powder
Storage Buffer	Lyophilized from a 0.2 µm filtered PBS, 6% Trehalose, pH 7.4
Product Type	Recombinant Protein
Immunogen Species	Chlorocebus sabaesus (Green monkey) (<i>Cercopithecus sabaesus</i>)
Biological Activity	Measured by its binding ability in a functional ELISA. Immobilized <i>Macaca fascicularis</i> CLDN6 at 5 µg/mL can bind Anti-CLDN6/9 recombinant antibody (CSB-RA005508MA1HU). The EC50 is 4.186-6.635 ng/mL. The VLPs (CSB-MP3838) is negative control.
Sequence	LVSCALPMWKVTAFIGNSIVVAQVVWEGLWMSCVVQSTGQMCKVYDSLAL PQDLQAARALCVIALLVFLGLLVYLAGAKCTTCVEEKDSKARLVLTSGIVFVIS GVLTLPVCWTAHAIIIRDFYNPLVAEAQKREL GASLYLGWAASGLLLLGGGLLC CTCPSGSGSRGPSHYMARYSTSAPAIRGPPSEYPTKNYV
Source	Mammalian cell
Target Names	CLDN6
Expression Region	22-220aa
Notes	The VLPs are expressed from human 293 cells (HEK293). Mix the sample gently by repeatedly pipetting it up and down. Do not vortex. Repeated freezing and thawing is not recommended. Store the protein at -20°C/-80°C upon receiving it, and ensure to avoid repeated freezing and thawing, otherwise, it will affect the protein activity. The immunization strategy should be optimized (antigen dose, regimen and adjuvant).
Tag Info	C-terminal 10xHis-tagged (This tag can be tested only under denaturing conditions)
Mol. Weight	22.6kDa
Protein Length	Full Length of Mature Protein
Image	



CSB-MP025131HU is detected by Mouse anti-6*His monoclonal antibody.



Activity

Measured by its binding ability in a functional ELISA. Immobilized *Macaca fascicularis* CLDN6 at 5 µg/ml can bind Anti-CLDN6/9 recombinant antibody (CSB-RA005508MA1HU). The EC₅₀ is 4.186-6.635 ng/mL. The VLPs (CSB-MP3838) is negative control.

Endotoxin

Less than 1.0 EU/ug as determined by LAL method.

Reconstitution

We recommend that this vial be briefly centrifuged prior to opening to bring the contents to the bottom. Please reconstitute protein in deionized sterile water to a concentration of 0.1-1.0 mg/mL. We recommend to add 5-50% of glycerol (final concentration) and aliquot for long-term storage at -20°C/-80°C. Our default final concentration of glycerol is 50%. Customers could use it as reference.

Shelf Life

The shelf life is related to many factors, storage state, buffer ingredients, storage temperature and the stability of the protein itself.

Generally, the shelf life of liquid form is 6 months at -20°C/-80°C. The shelf life of lyophilized form is 12 months at -20°C/-80°C.