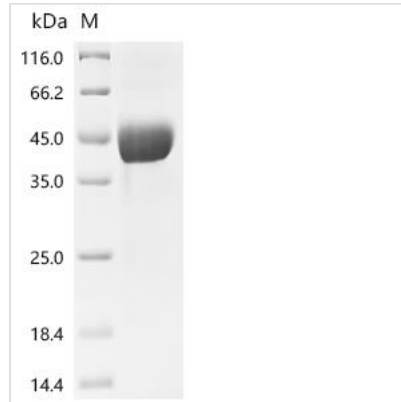


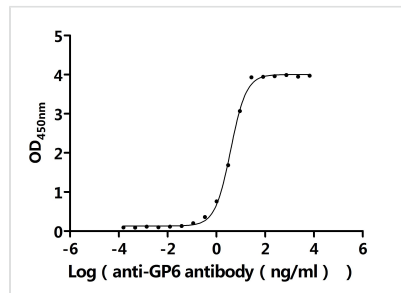


Recombinant Human Platelet glycoprotein VI (GP6), partial (Active)

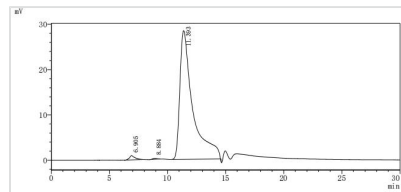
Product Code	CSB-MP872550HU
Abbreviation	Recombinant Human GP6 protein, partial (Active)
Storage	The shelf life is related to many factors, storage state, buffer ingredients, storage temperature and the stability of the protein itself. Generally, the shelf life of liquid form is 6 months at -20°C/-80°C. The shelf life of lyophilized form is 12 months at -20°C/-80°C.
Uniprot No.	Q9HCN6
Form	Lyophilized powder
Storage Buffer	Lyophilized from a 0.2 µm filtered PBS, 6% Trehalose, pH 7.4
Product Type	Recombinant Protein
Immunogen Species	Homo sapiens (Human)
Biological Activity	Measured by its binding ability in a functional ELISA. Immobilized Human GP6 protein at 2 µg/mL can bind Anti-GP6 recombinant antibody (CSB-RA872550MA1HU). The EC50 is 3.598-4.105 ng/mL.
Purity	≥ 95% as determined by SDS-PAGE. ≥ 95% as determined by SEC-HPLC.
Sequence	QSGPLPKPSLQALPSSLVPLEKPVTLRCQGPPGVLDLYRLEKLSSSRYPQDQAVL FIPAMKRSLAGRYRCSYQNGSLWLSLPSDQLELVATGVFAKPSLSAQPGPAVS SGGDVTLQCQTRYGFDQFALYKEGDPAPYKNPERWYRASFPITVTAHSGTY RCYSFSSRDPYLWSAPSDPLELVVTGTSVTPSRLPTEPPSPVAEFSEATAELT VSFTNEVFTTETSRISITASPKESDSPAGPARQYYTK
Source	Mammalian cell
Target Names	GP6
Expression Region	21-267aa
Notes	Repeated freezing and thawing is not recommended. Store working aliquots at 4°C for up to one week.
Tag Info	C-terminal 10xHis-tagged
Mol. Weight	28.3 kDa
Protein Length	Partial
Image	



(Tris-Glycine gel) Discontinuous SDS-PAGE (reduced) with 5% enrichment gel and 15% separation gel.



Activity
 Measured by its binding ability in a functional ELISA. Immobilized Human GP6 protein at 2 $\mu\text{g/ml}$ can bind Anti-GP6 recombinant antibody (CSB-RA872550MA1HU). The EC_{50} is 3.598-4.105 ng/mL.



The purity of GP6 was greater than 95% as determined by SEC-HPLC

Endotoxin

Less than 1.0 EU/ug as determined by LAL method.

Reconstitution

We recommend that this vial be briefly centrifuged prior to opening to bring the contents to the bottom. Please reconstitute protein in deionized sterile water to a concentration of 0.1-1.0 mg/mL. We recommend to add 5-50% of glycerol (final concentration) and aliquot for long-term storage at $-20^{\circ}\text{C}/-80^{\circ}\text{C}$. Our default final concentration of glycerol is 50%. Customers could use it as reference.

Shelf Life

The shelf life is related to many factors, storage state, buffer ingredients, storage temperature and the stability of the protein itself.

Generally, the shelf life of liquid form is 6 months at $-20^{\circ}\text{C}/-80^{\circ}\text{C}$. The shelf life of lyophilized form is 12 months at $-20^{\circ}\text{C}/-80^{\circ}\text{C}$.