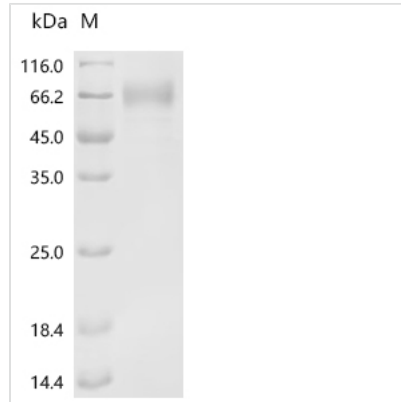


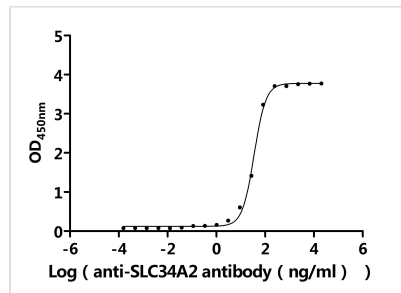


Recombinant Human Sodium-dependent phosphate transport protein 2B (SLC34A2), partial (Active)

Product Code	CSB-MP021581HU1
Abbreviation	Recombinant Human SLC34A2 protein, partial (Active)
Storage	The shelf life is related to many factors, storage state, buffer ingredients, storage temperature and the stability of the protein itself. Generally, the shelf life of liquid form is 6 months at -20°C/-80°C. The shelf life of lyophilized form is 12 months at -20°C/-80°C.
Uniprot No.	O95436
Form	Lyophilized powder
Storage Buffer	Lyophilized from a 0.2 µm filtered PBS, 6% Trehalose, pH 7.4
Product Type	Recombinant Protein
Immunogen Species	Homo sapiens (Human)
Biological Activity	Measured by its binding ability in a functional ELISA. Immobilized Human SLC34A2 at 2 µg/mL can bind Anti-SLC34A2 recombinant antibody (CSB-RA021581MA2HU). The EC50 is 32.86-37.66 ng/mL.
Sequence	VEVATHYLEIITQLIVESFHFKNGEDAPDLLKVITKPFTKLIVQLDKKVISQIAMND EKAKNKSLVKIWCKTFTNKTQINVTVPSTANCTSPSLCWTDGIQNWTKMKNVTY KENIAKCQHIFVNFHLPDL
Source	Mammalian cell
Target Names	SLC34A2
Expression Region	234-362aa
Notes	Repeated freezing and thawing is not recommended. Store working aliquots at 4°C for up to one week.
Tag Info	N-terminal 10xHis-tagged and C-terminal mFc-tagged
Mol. Weight	45.5kDa
Protein Length	Partial
Image	



(Tris-Glycine gel) Discontinuous SDS-PAGE (reduced) with 5% enrichment gel and 15% separation gel.



Activity

Measured by its binding ability in a functional ELISA. Immobilized Human SLC34A2 at 2 µg/ml can bind Anti-SLC34A2 recombinant antibody (CSB-RA021581MA2HU). The EC₅₀ is 32.86-37.66 ng/mL.

Endotoxin

Less than 1.0 EU/ug as determined by LAL method.

Reconstitution

We recommend that this vial be briefly centrifuged prior to opening to bring the contents to the bottom. Please reconstitute protein in deionized sterile water to a concentration of 0.1-1.0 mg/mL. We recommend to add 5-50% of glycerol (final concentration) and aliquot for long-term storage at -20°C/-80°C. Our default final concentration of glycerol is 50%. Customers could use it as reference.

Shelf Life

The shelf life is related to many factors, storage state, buffer ingredients, storage temperature and the stability of the protein itself.

Generally, the shelf life of liquid form is 6 months at -20°C/-80°C. The shelf life of lyophilized form is 12 months at -20°C/-80°C.