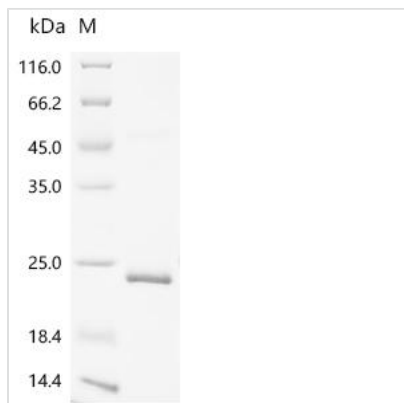




Recombinant Arabidopsis thaliana Ferredoxin-thioredoxin reductase catalytic chain, chloroplastic (FTRC)

Product Code	CSB-EP871086DOA
Abbreviation	Recombinant Mouse-ear cress FTRC protein
Storage	The shelf life is related to many factors, storage state, buffer ingredients, storage temperature and the stability of the protein itself. Generally, the shelf life of liquid form is 6 months at -20°C/-80°C. The shelf life of lyophilized form is 12 months at -20°C/-80°C.
Uniprot No.	Q9SJ89
Form	Liquid or Lyophilized powder
Storage Buffer	If the delivery form is liquid, the default storage buffer is Tris/PBS-based buffer, 5%-50% glycerol. If the delivery form is lyophilized powder, the buffer before lyophilization is Tris/PBS-based buffer, 6% Trehalose, pH 8.0.
Product Type	Recombinant Arabidopsis thaliana Ferredoxin-thioredoxin reductase catalytic chain, chloroplastic (FTRC)
Immunogen Species	Arabidopsis thaliana (Mouse-ear cress)
Sensitivity	Not Test
Purity	≥ 90% as determined by SDS-PAGE.
Sequence	AKTEPSEKSVEIMRKFSEQYARRSGTYFCVDKGVTSVVIKGLAEHKDSYGAPL CPCRHYDDKAAEVGQGFWNCPCVPMRERKECHCMLFLTPDNDFAGKDQTIT SDEIKETTANM
Research Area	Others
Source	E.coli
Target Names	FTRC
Expression Region	32-146aa
Notes	Repeated freezing and thawing is not recommended. Store working aliquots at 4°C for up to one week.
Tag Info	C-terminal 6xHis-tagged
Mol. Weight	19.9 kDa
Protein Length	Full Length of Mature Protein
Image	



(Tris-Glycine gel) Discontinuous SDS-PAGE (reduced) with 5% enrichment gel and 15% separation gel.

Reconstitution

We recommend that this vial be briefly centrifuged prior to opening to bring the contents to the bottom. Please reconstitute protein in deionized sterile water to a concentration of 0.1-1.0 mg/mL. We recommend to add 5-50% of glycerol (final concentration) and aliquot for long-term storage at $-20^{\circ}\text{C}/-80^{\circ}\text{C}$. Our default final concentration of glycerol is 50%. Customers could use it as reference.

Shelf Life

The shelf life is related to many factors, storage state, buffer ingredients, storage temperature and the stability of the protein itself. Generally, the shelf life of liquid form is 6 months at $-20^{\circ}\text{C}/-80^{\circ}\text{C}$. The shelf life of lyophilized form is 12 months at $-20^{\circ}\text{C}/-80^{\circ}\text{C}$.