



Recombinant Glycine max non-specific serine/threonine protein kinase (100817960), partial

Product Code	CSB-BP5551GGV
Abbreviation	Recombinant Glycine max protein kinase domain-containing protein, partial
Storage	The shelf life is related to many factors, storage state, buffer ingredients, storage temperature and the stability of the protein itself. Generally, the shelf life of liquid form is 6 months at -20°C/-80°C. The shelf life of lyophilized form is 12 months at -20°C/-80°C.
Uniprot No.	I1KRE5
Form	Liquid or Lyophilized powder
Storage Buffer	If the delivery form is liquid, the default storage buffer is Tris/PBS-based buffer, 5%-50% glycerol. If the delivery form is lyophilized powder, the buffer before lyophilization is Tris/PBS-based buffer, 6% Trehalose, pH 8.0.
Product Type	Recombinant Glycine max non-specific serine/threonine protein kinase (100817960), partial
Sensitivity	Not Test
Purity	≥ 90% as determined by SDS-PAGE.
Sequence	TSLDVEIQALKAFKNSITGDPSGALADWVDSHHHCNWSGIACDPSSSHVISISL VSLQLQGEISPFLGNISGLQVLDLTSNSFTGYIPAQLSFCTHLSTLSLFFENSLSG PIPELGNLKSLQYLDLGNFLNGSLPDSIFNCTSLLGIAFTFNNLTGRIPSNIGN LVNATQILGYGNNLVGSIPLSIGQLVALRALDFSQNKLSGVIPREIGNLTNLEYLL LFQNSLSGKIPSEIAKCSKLLNLEFYENQFIGSIPPELGNLVRLETLRLYHNNLNS TIPSSIFQLKSLTHLGLSENILEGTISSEIGSLSSLQVLTLHNAFTGKIPSSITNLT NLTYLSMSQNLLSGELPPNLGVLHNLKFLVLNSNNFHGSIPSSITNITSLVNVSL SFNALTGKIPEGFSRSPNLTFLSLTSNKMTGEIPDDLYNCSNLSTLSLAMNNFS GLIKSGIQNLSKLIRLQLNANSFIGPIPEIGNLNQLVTLSENRFSGQIPPELSK LSHLQGLSLYANVLEGPIPKLSELKELTEMLHQNKLVGQIPDSLSKLEMLSFL DLHGKLDGSI PRSMGKLNQLSLDLSHNQLTGSIPRDVIAHFKDMQMYLNLS YNHLVGSVPTELGMLGMIQAIDISNNNLSGFIPKTLAGCRNLFNLD FSGNNISG PIPAEAFSHMDLLENLNSRNHLEGEIPEILAEIDLSSLDLSQNDLKG TIPERF ANLSNLVHLNLSFNQLEGPVPSNGIFAHINASSMVGNQDLCGAKFLSQCRETK HS
Research Area	Others
Source	Baculovirus
Target Names	100817960
Expression Region	25-797aa
Notes	Repeated freezing and thawing is not recommended. Store working aliquots at



4°C for up to one week.

Tag Info

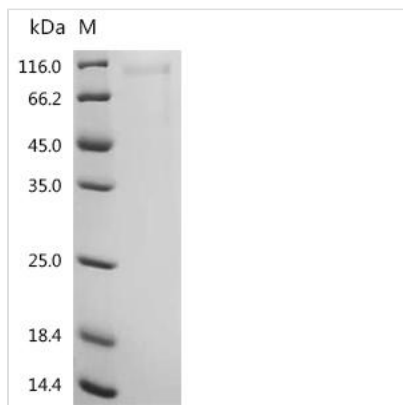
C-terminal 6xHis-tagged

Mol. Weight

84.5 kDa

Protein Length

Partial

Image

(Tris-Glycine gel) Discontinuous SDS-PAGE (reduced) with 5% enrichment gel and 15% separation gel.

Reconstitution

We recommend that this vial be briefly centrifuged prior to opening to bring the contents to the bottom. Please reconstitute protein in deionized sterile water to a concentration of 0.1-1.0 mg/mL. We recommend to add 5-50% of glycerol (final concentration) and aliquot for long-term storage at -20°C/-80°C. Our default final concentration of glycerol is 50%. Customers could use it as reference.

Shelf Life

The shelf life is related to many factors, storage state, buffer ingredients, storage temperature and the stability of the protein itself. Generally, the shelf life of liquid form is 6 months at -20°C/-80°C. The shelf life of lyophilized form is 12 months at -20°C/-80°C.