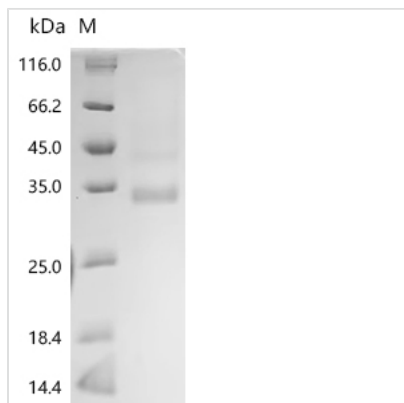




Recombinant Human Transcriptional enhancer factor TEF-5 (TEAD3), partial

Product Code	CSB-YP860344HU
Abbreviation	Recombinant Human TEAD3 protein, partial
Storage	The shelf life is related to many factors, storage state, buffer ingredients, storage temperature and the stability of the protein itself. Generally, the shelf life of liquid form is 6 months at -20°C/-80°C. The shelf life of lyophilized form is 12 months at -20°C/-80°C.
Uniprot No.	Q99594
Form	Liquid or Lyophilized powder
Storage Buffer	If the delivery form is liquid, the default storage buffer is Tris/PBS-based buffer, 5%-50% glycerol. If the delivery form is lyophilized powder, the buffer before lyophilization is Tris/PBS-based buffer, 6% Trehalose, pH 8.0.
Product Type	Recombinant Human Transcriptional enhancer factor TEF-5 (TEAD3), partial
Immunogen Species	Homo sapiens (Human)
Sensitivity	Not Test
Purity	Greater than 95% as determined by SDS-PAGE.
Sequence	MNLDQVSKDKALQSMASMSSAQIVSASVLQNKFSPPSPLPQAVFSTSSRFWS SPPLLGGQPGPSQDIKPFQAQPAYPIQPPLPPTLSSYEPLAPLPSAAASVPVWQ DRTIASSRLRLLLEYSAFMEVQRDPDTYSKHLFVHIGQTNPAFSDPPLEAVDVR QIYDKFPEKKGGLKELYEKGPPNAFFLVKFWADLNSTIQEGPGAFYGVSSQYS SADSMTISVSTKVCSEFGKQVVEKVEYARLENGRFVYRIHRSPMCEYMINFIH KCLKHLPEKYMMNSVLENFTILQVVTSRDSQETLLVIAFVFEVSTSEHGAQHVVY KLVKD
Research Area	Transcription
Source	Yeast
Target Names	TEAD3
Expression Region	112-435aa
Notes	Repeated freezing and thawing is not recommended. Store working aliquots at 4°C for up to one week.
Tag Info	N-terminal Twin-Strep-tagged and C-terminal 6xHis-tagged
Mol. Weight	40.8 kDa
Protein Length	Partial
Image	



(Tris-Glycine gel) Discontinuous SDS-PAGE (reduced) with 5% enrichment gel and 15% separation gel.

Reconstitution

We recommend that this vial be briefly centrifuged prior to opening to bring the contents to the bottom. Please reconstitute protein in deionized sterile water to a concentration of 0.1-1.0 mg/mL. We recommend to add 5-50% of glycerol (final concentration) and aliquot for long-term storage at $-20^{\circ}\text{C}/-80^{\circ}\text{C}$. Our default final concentration of glycerol is 50%. Customers could use it as reference.

Shelf Life

The shelf life is related to many factors, storage state, buffer ingredients, storage temperature and the stability of the protein itself. Generally, the shelf life of liquid form is 6 months at $-20^{\circ}\text{C}/-80^{\circ}\text{C}$. The shelf life of lyophilized form is 12 months at $-20^{\circ}\text{C}/-80^{\circ}\text{C}$.