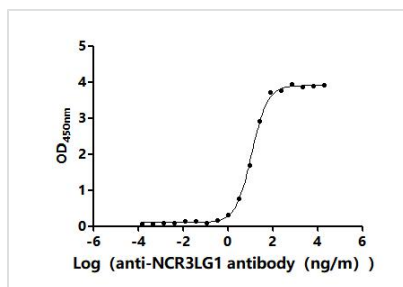




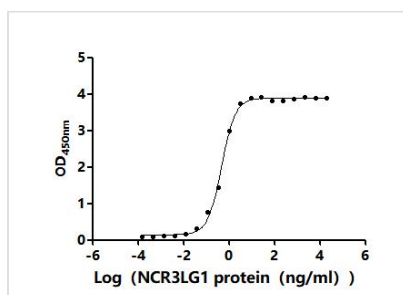
# NCR3LG1 Recombinant Monoclonal Antibody

|                            |  |
|----------------------------|--|
| <b>Product Code</b>        | CSB-RA737873MA1HU  |
| <b>Storage</b>             | Upon receipt, store at -20°C or -80°C. Avoid repeated freeze.                    |
| <b>Uniprot No.</b>         | Q68D85   |
| <b>Immunogen</b>           | Recombinant Human NCR3LG1 protein  |
| <b>Species Reactivity</b>  | Human  |
| <b>Tested Applications</b> | ELISA; Recommended dilution: ELISA:1:5000-1:50000                                |
| <b>Form</b>                | Liquid   |
| <b>Conjugate</b>           | Non-conjugated   |
| <b>Storage Buffer</b>      | Preservative: 0.03% Proclin 300<br>Constituents: 50% Glycerol, 0.01M PBS, PH 7.4 |
| <b>Purification Method</b> | Affinity-chromatography  |
| <b>Isotype</b>             | hIgG1  |
| <b>Clonality</b>           | Monoclonal   |
| <b>Product Type</b>        | Recombinant Antibody   |
| <b>Immunogen Species</b>   | Homo sapiens (Human)   |
| <b>Research Area</b>       | Immunology   |
| <b>Target Names</b>        | NCR3LG1  |
| <b>Clone No.</b>           | 9E5  |

## Image



The Binding Activity of Human NCR3LG1 with Anti-NCR3LG1 Recombinant Antibody Activity: Measured by its binding ability in a functional ELISA. Immobilized Human NCR3LG1(CSB-BP737873HU) at 2 µg/mL can bind Anti-NCR3LG1 recombinant antibody. The EC<sub>50</sub> is 10.90-12.22 ng/mL.



The Binding Activity of Human NCR3LG1 with Anti-NCR3LG1 Recombinant Antibody Activity: Measured by its binding ability in a functional ELISA. Immobilized Anti-NCR3LG1 recombinant antibody at 2 µg/mL can bind Human NCR3LG1(CSB-MP737873HU-B). The EC<sub>50</sub> is 0.4364-0.5147 ng/mL.

## Usage

For Research Use Only. Not for use in diagnostic or therapeutic procedures.