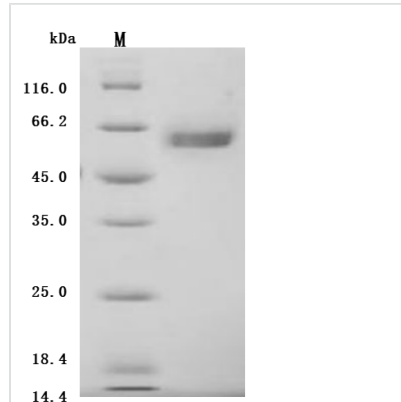


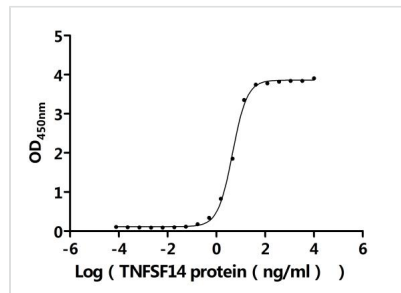


Recombinant *Macaca fascicularis* Lymphotoxin beta receptor (LTBR), partial (Active)

Product Code	CSB-MP6176MOVd9
Abbreviation	Recombinant Cynomolgus monkey LTBR protein, partial (Active)
Storage	The shelf life is related to many factors, storage state, buffer ingredients, storage temperature and the stability of the protein itself. Generally, the shelf life of liquid form is 6 months at -20°C/-80°C. The shelf life of lyophilized form is 12 months at -20°C/-80°C.
Uniprot No.	A0A2K5VGQ6
Form	Lyophilized powder
Storage Buffer	Lyophilized from a 0.2 µm filtered PBS, 6% Trehalose, pH 7.4
Product Type	Recombinant Protein
Immunogen Species	<i>Macaca fascicularis</i> (Crab-eating macaque) (Cynomolgus monkey)
Biological Activity	Measured by its binding ability in a functional ELISA. Immobilized Cynomolgus LTBR at 2 µg/mL can bind Biotinylated human TNFSF14 (CSB-MP023991HUj7-B). The EC50 is 4.316-4.875 ng/mL.
Purity	Greater than 95% as determined by SDS-PAGE.
Sequence	SQPQVVRKGPVPPYGSENQTCRDQEKEYYEPRHRICCSRCPPGTYVSAKCS RSRDTVCATCAENSYNEHWNLYLTICQLCRPCDPVMGLEEIAPCTSKRKTQCR CQPGMFCAAWALECTHCELLSDCPPGTEAELKDEVGKGNHCVCKAGHFQ NTSSPSARCQPHTRCEDQGLVEAAPGTAQSDTTCRNPSESLPPEMSGT
Source	Mammalian cell
Target Names	LTBR
Expression Region	28-229aa
Notes	Repeated freezing and thawing is not recommended. Store working aliquots at 4°C for up to one week.
Tag Info	C-terminal hFc1-tagged
Mol. Weight	51.2 kDa
Protein Length	Partial
Image	



(Tris-Glycine gel) Discontinuous SDS-PAGE (reduced) with 5% enrichment gel and 15% separation gel.



Activity

Measured by its binding ability in a functional ELISA. Immobilized Cynomolgus LTBR at 2 μ g/ml can bind Biotinylated human TNFSF14 (CSB-MP023991HUj7-B). The EC_{50} is 4.316-4.875 ng/mL.

Endotoxin

Less than 1.0 EU/ μ g as determined by LAL method.

Reconstitution

We recommend that this vial be briefly centrifuged prior to opening to bring the contents to the bottom. Please reconstitute protein in deionized sterile water to a concentration of 0.1-1.0 mg/mL. We recommend to add 5-50% of glycerol (final concentration) and aliquot for long-term storage at $-20^{\circ}\text{C}/-80^{\circ}\text{C}$. Our default final concentration of glycerol is 50%. Customers could use it as reference.

Shelf Life

The shelf life is related to many factors, storage state, buffer ingredients, storage temperature and the stability of the protein itself.

Generally, the shelf life of liquid form is 6 months at $-20^{\circ}\text{C}/-80^{\circ}\text{C}$. The shelf life of lyophilized form is 12 months at $-20^{\circ}\text{C}/-80^{\circ}\text{C}$.