



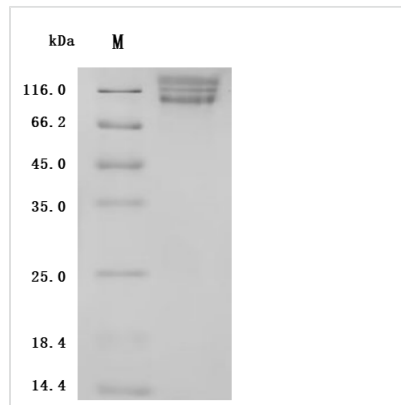
Recombinant Human ITGAV&ITGB6 Heterodimer Protein (Active)

Product Code	CSB-MP6145HU
Abbreviation	Recombinant Human ITGAV&ITGB6 Heterodimer protein (Active)
Storage	The shelf life is related to many factors, storage state, buffer ingredients, storage temperature and the stability of the protein itself. Generally, the shelf life of liquid form is 6 months at -20°C/-80°C. The shelf life of lyophilized form is 12 months at -20°C/-80°C.
Uniprot No.	P06756-1/P18564-1
Form	Lyophilized powder
Storage Buffer	Lyophilized from a 0.2 µm filtered PBS, 6% Trehalose, pH 7.4
Product Type	Recombinant Protein
Immunogen Species	Homo sapiens (Human)
Biological Activity	①Measured by its binding ability in a functional ELISA. Immobilized Human ITGAV&ITGB6 at 2 µg/mL can bind Human TGFB1 (CSB-MP023446HU(A4)c9). The EC50 is 8.576-10.18 ng/mL.②Measured by its binding ability in a functional ELISA. Immobilized Human ITGAV&ITGB6 at 2 µg/mL can bind Anti-ITGB6 recombinant antibody (CSB-RA011890MA1HU). The EC50 is 7.021-9.054 ng/mL.
Purity	Greater than 95% as determined by SDS-PAGE. Greater than 90% as determined by SEC-HPLC.
Sequence	FNLDVDSPAEYSGPEGSYFGFAVDFFVPSASSRMFLLVGAPKANTTQPGIVEG GQVLKCDWSSTRRCQPIEFDATGNRDYAKDDPLEFKSHQWFGASVRSKQDKI LACAPLYHWRTEMKQEREPVGTCTFLQDGTKTVEYAPCRSQDIDADGQGFCQ GGFSIDFTKADR VLLGGPGSFYWQGLISDQVAEIVSKYDPNVYSIKYNNQLAT RTAQAIFFDDSYLGYSAVVGDFNGDGIDDFVSGVPRAARTLGMVYIYDGKNMSS LYNFTGEQMAAYFGFSAATDINGDDYADVFIGAPLFMDRGS DGLQEVGQV SVSLQRASGDFQTTKLNQFEV FARFGSAIAPLGDLDQDGFNDIAIAAPYGGED KKGIVYIFNGRSTGLNAVPSQILEGQWAARSMPPSFGYSMKGATDIDKNGYPD LIVGAFGVDRAILYRARPVITVNAGLEVYPSILNQDNKTC SLPGTALKVSCFNVR FCLKADGKGVLP RKLNFQVELLLDKLKQKGAI RRALFLYSRSPSHSKNMTISRG GLMQCEELIAYLRDESEFRDKLTPITIFMEYRLDYRTAADTTGLQPILNQFTPAN ISRQAHILLDCGEDNVCKPKLEVSVDSDQKKIYIGDDNPLTLIVKAQNQGE GAY EAELIVSIPLQADFIGVVRNNEALARLSCAFKTENQTRQVVC DLGNPMKAGTQL LAGLRF SVHQQSEMDTSVKFDLQIQSSNLFDKVSPVVSHKVDLAVLAAVEIRG VSSPDHVFLPIPNWEHKENPETEEDVGPVVQHIYELRNNGPSSFSKAMLHLQ WPYKYNNTLLYILHYDIDGPMNCTSDMEINPLRIKISSLQTTEKNDTVAGQGE RDHLITKRDLALSEGDIHTLGCQVAQCLKIVCQVGR LDRGKSAILYVKSLLWTE TFMNKENQNHSSYSLKSSASFNVIEFPYKNLPIEDITNSTLVTTNVTWGIQPAPM PV&GCALGGAETCEDCLLIGPQCAWCAQENFTHPSGVGERCDTPANLLAKGC QLNFIENPVSQVEILKNKPLSVGRQKNSSDIVQIAPQSLILKLRPGGAQTLQVHV

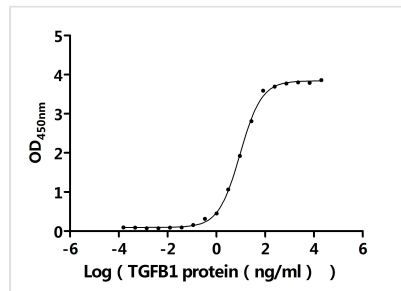


RQTEDYPVDLYYLMDSLASMDDDLNTIKELGSRLSKEMSKLTSNFRLGFGSFV
 EKPVSPFVKTTPEEIANPCSSIPYFCLPTFGFKHILPLTND AERFNEIVKNQKISA
 NIDTPEGGFDAIMQAAVCKEKIGWRNDSLHLLVFVSDADSHFGMDSKLAGIVIP
 NDGLCHLDSKNEYSMSTVLEYPTIGQLIDKLVQNNVLLIFAVTQE QVHLYENYA
 KLIPGATVGLLQKDSGNILQLIISAYEELRSEVELEVLGDTEGLNLSFTAICNNGT
 LFQHQKKCSHMKVGD TASFSVTVNIPH CERRSRHIIKPVGLGDALELLV SPEC
 NCDCQKEVEVNSSKCHHGN SFGQCGVCACHPGHMGRCECGEDMLSTDSC
 KEAPDHPSCSGRGDCYCGQCICHLSPYGN IYGPYCQCDNFSCVRHKGLLCG
 GNGDCDCGECVCRSGWTGEYC NCTTSTDSCVSE DGVLCSGRGDCVCGKCV
 CTNPGASGPTCERCPTCGDPCNSKRSCIECHLSAAGQAREECVDKCKLAGAT
 ISEEDFSKDGSVSCSLQGENECLITFLITDNEGKTIHSINEKDCPKPPN

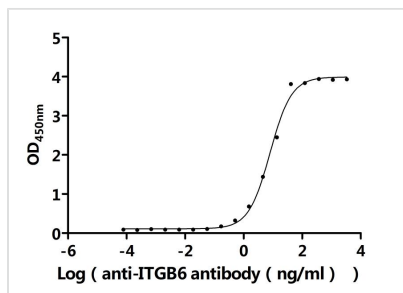
Source	Mammalian cell
Target Names	ITGAV&ITGB6
Expression Region	31-992aa(ITGAV) & 22-707aa(ITGB6)
Notes	Repeated freezing and thawing is not recommended. Store working aliquots at 4°C for up to one week.
Tag Info	C-terminal Flag-tagged&C-terminal 10xHis-tagged
Mol. Weight	107.3 kDa&75.8 kDa
Protein Length	Heterodimer

Image


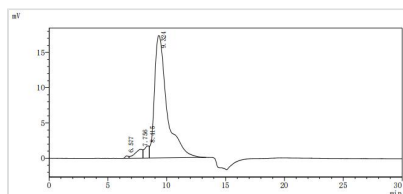
(Tris-Glycine gel) Discontinuous SDS-PAGE (reduced) with 5% enrichment gel and 15% separation gel.


Activity

Measured by its binding ability in a functional ELISA. Immobilized Human ITGAV&ITGB6 at 2 µg/ml can bind Human TGFB1 (CSB-MP023446HU(A4)c9). The EC₅₀ is 8.576-10.18 ng/mL.


Activity

Measured by its binding ability in a functional ELISA. Immobilized Human ITGAV&ITGB6 at 2 μ g/ml can bind Anti-ITGB6 recombinant antibody (CSB-RA011890MA1HU). The EC₅₀ is 7.021-9.054 ng/mL.



The purity of ITGAV&ITGB6 was greater than 90% as determined by SEC-HPLC

Endotoxin

Less than 1.0 EU/ug as determined by LAL method.

Reconstitution

We recommend that this vial be briefly centrifuged prior to opening to bring the contents to the bottom. Please reconstitute protein in deionized sterile water to a concentration of 0.1-1.0 mg/mL. We recommend to add 5-50% of glycerol (final concentration) and aliquot for long-term storage at -20°C/-80°C. Our default final concentration of glycerol is 50%. Customers could use it as reference.

Shelf Life

The shelf life is related to many factors, storage state, buffer ingredients, storage temperature and the stability of the protein itself.

Generally, the shelf life of liquid form is 6 months at -20°C/-80°C. The shelf life of lyophilized form is 12 months at -20°C/-80°C.