



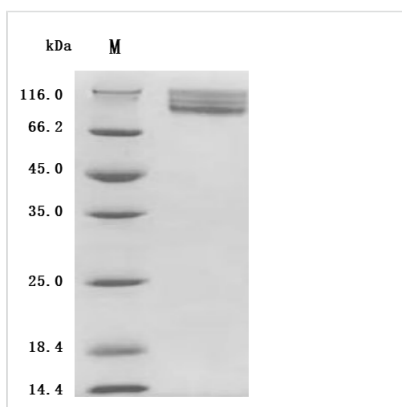
Recombinant Mouse Itgav&Itgb6 Heterodimer Protein (Active)

Product Code	CSB-MP6686MO
Abbreviation	Recombinant Mouse Itgav&Itgb6 Heterodimer protein (Active)
Storage	The shelf life is related to many factors, storage state, buffer ingredients, storage temperature and the stability of the protein itself. Generally, the shelf life of liquid form is 6 months at -20°C/-80°C. The shelf life of lyophilized form is 12 months at -20°C/-80°C.
Uniprot No.	P43406/Q9Z0T9
Form	Lyophilized powder
Storage Buffer	Lyophilized from a 0.2 μm filtered PBS, 6% Trehalose, pH 7.4
Product Type	Recombinant Protein
Immunogen Species	Mus musculus (Mouse)
Biological Activity	①Measured by its binding ability in a functional ELISA. Immobilized Mouse Itgav&Itgb6 at 2 μg/mL can bind Human TGFB1 (CSB-MP023446HU(A4)(M)-B). The EC50 is 5.984-7.231 ng/mL.②Measured by its binding ability in a functional ELISA. Immobilized Mouse Itgav&Itgb6 at 2 μg/mL can bind Human TGFB1 (CSB-MP023446HU(A4)c9). The EC50 is 1.891-2.246 ng/mL.③Measured by its binding ability in a functional ELISA. Immobilized Mouse Itgav&Itgb6 at 2 μg/mL can bind Anti-ITGB6 recombinant antibody (CSB-RA011890MA1HU). The EC50 is 3.911-4.510 ng/mL.
Purity	Greater than 95% as determined by SDS-PAGE.
Sequence	FNLDVESPAEYAGPEGSYFGFAVDFFEPSTSSRMFLLVGAPKANTTQPGIVEG GQVLKCECSSSRRCQPIEFDSTGNRDYAKDDPLEFKSHQWFGASVRSKQDKI LACAPLYHWRTEMKQEREPVGTCLFQDGTKTVEYAPCRSKNIDADGGQFCQ GGFSIDFTKADRVLGGPGSFYWQGLISDQVAEIIISKYDPNVYSIKYNNQLAT RTAQAIFFDDSYLGYSAVAVGDFNGDGIEDFVSGVPRAARTLGMVYIYDGNMSS LHNFTGEQMAAYFGFSVAATDINGDDYADVFIGAPLFMDRGS DGLQEVGQV SVSLQRAVGDFQTTKLNDFEVFARFGSAIAPLGDLDQDGFNDIAIAAPYGGED KKGLVYIFNGRSTGLNSVPSQILEGWAAQSMPPSFGYSMKGATDVDNRNGYP DLVVGAFGVDRVLYRARPVVTVNAGLEVYPSILNQDNKICPLPGTALKVSCFN VRFCKADGKGTLPKRLHFQVELLLDKLKQKGAIRRALFLHNRSPVHSKTMTV FRGGQMCEELVAYLRDESEFRDKLTPITIFMEYRLDQRTAADATGLQPILNQF TPANVSRQAHILLDCGEDNVCKPKLEVSVNSDQKKIYIGDDNPLTLTVKAQNNQ GEGAYEAEIVSIPPQADFIGVVRNNEALARLSCAFKTENQTRQVVCDLGNPM KAGTQLLAGLRFVHQQSEMDSVKFDLKIQSSNSFDNVSPVVSYKVDLAVLA AVEIRGVSSPDHIFLPIPNWEYKENPETEEDVGPIVQHIYELRNNGPSSFSKAIL NLQWPYKYNNNTLLYILHYDIDGPMNCTADTEINPLRIKTPEKNDTAAAGQGER NHLITKRDLTREGDVHTLGCIAKCLQITCQVGRDRGKSAILYVKSLWTTET MNKENQNHSSYLSKSSASFNIIIEFPYKNLPIEDLFNSTLVTTNITWGIQAPMPV& GCAWGAESCSDCLLTGPHCAWCSQENFTHLSGAGERCDTPANLLAKGCQL

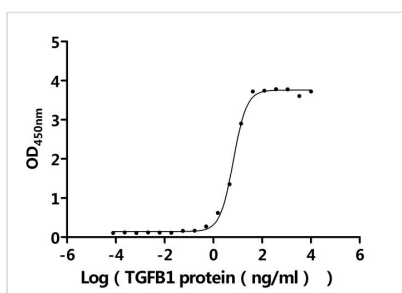


PFIENPVSRIEVLQNKPLSVGRQKNSSDIVQIAPQSLVLKLRPGREQTLQVQVR
 QTEDYPVDLYYLMDLASMDDDLNTIKELGSRLAKEMSKLTSNFRLGFGSFVE
 KPVSPFMKTTPEEITNPCSSIPYFCLPTFGFKHILPLTDDAERFNEIVRKQKISAN
 IDTPEGGFDAIMQAAVCKEKIGWRNDSLHLLVVFVSDADSHFGMDSKLAGIVIPN
 DGLCHLDHRNEYSMSTVLEYPTIGQLIDKLVQNNVLLIFAVTQEQVHLYENYAK
 LIPGATVGLLQKDSGNILQLIISAYEELRSEVELEVLGDTEGLNLSFTALCNNGVL
 FPHQKKCSHMKVGDASFNVTVSVSNCEKRSRNLIIKPVGLGDTLEILVSAECD
 CDCQREIETNSSKCHNGNGSFQCGVCTCNPGHMGPHECEGDMVSTDSCK
 ESPGHPSCSGRGDCYCGQCICHLSPYGSYGPYCQCDNFSCLRHKGLLCGDN
 GDCDCGECVCRDGTGEYCNCTTNRDSTSEDGVLCSGRGDCVCGKCVCR
 NPGASGPTCERCPTCGDPCNSKRSCIECYLSADGQAQEECADKCKAIGATISE
 EDFSKDTSVSCSLQGENECLITFLITTDNEGKTIHNNINEKDCPKPPNIP

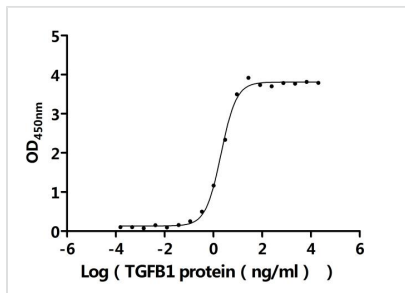
Source	Mammalian cell
Target Names	Itgav&Itgb6
Expression Region	31-988aa(Itgav) & 22-708aa(Itgb6)
Notes	Repeated freezing and thawing is not recommended. Store working aliquots at 4°C for up to one week.
Tag Info	C-terminal Flag-tagged&C-terminal 10xHis-tagged
Mol. Weight	106.9 kDa&76.4 kDa
Protein Length	Heterodimer

Image


(Tris-Glycine gel) Discontinuous SDS-PAGE (reduced) with 5% enrichment gel and 15% separation gel.

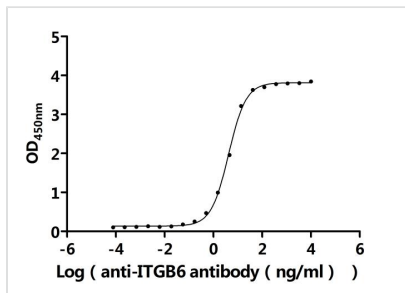


Activity
 Measured by its binding ability in a functional ELISA. Immobilized Mouse Itgav&Itgb6 at 2 µg/ml can bind Human TGFB1 (CSB-MP023446HU(A4)(M)-B). The EC₅₀ is 5.984-7.231 ng/mL.



Activity

Measured by its binding ability in a functional ELISA. Immobilized Mouse Itgav&Itgb6 at 2 µg/ml can bind Human TGFB1 (CSB-MP023446HU(A4)c9). The EC₅₀ is 1.891-2.246 ng/mL.



Activity

Measured by its binding ability in a functional ELISA. Immobilized Mouse Itgav&Itgb6 at 2 µg/ml can bind Anti-ITGB6 recombinant antibody (CSB-RA011890MA1HU). The EC₅₀ is 3.911-4.510 ng/mL.

Endotoxin

Less than 1.0 EU/ug as determined by LAL method.

Reconstitution

We recommend that this vial be briefly centrifuged prior to opening to bring the contents to the bottom. Please reconstitute protein in deionized sterile water to a concentration of 0.1-1.0 mg/mL. We recommend to add 5-50% of glycerol (final concentration) and aliquot for long-term storage at -20°C/-80°C. Our default final concentration of glycerol is 50%. Customers could use it as reference.

Shelf Life

The shelf life is related to many factors, storage state, buffer ingredients, storage temperature and the stability of the protein itself. Generally, the shelf life of liquid form is 6 months at -20°C/-80°C. The shelf life of lyophilized form is 12 months at -20°C/-80°C.