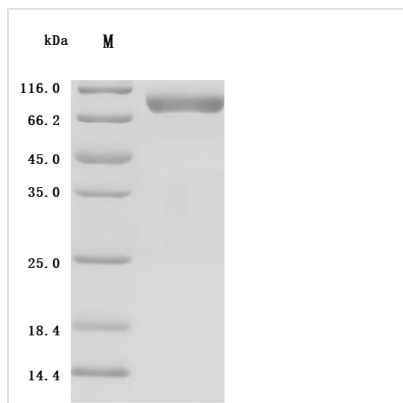


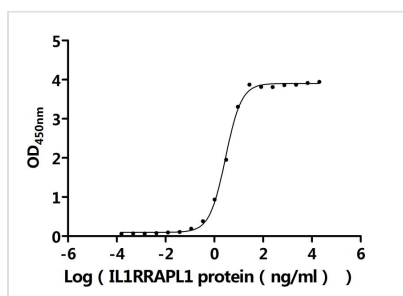


Recombinant Human Interleukin-1 receptor accessory protein-like 1 (IL1RAPL1), partial (Active)

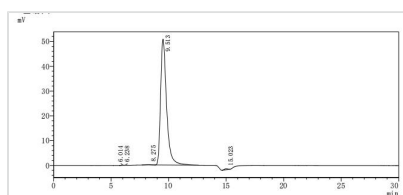
Product Code	CSB-MP011624HU1
Abbreviation	Recombinant Human IL1RAPL1 protein, partial (Active)
Storage	The shelf life is related to many factors, storage state, buffer ingredients, storage temperature and the stability of the protein itself. Generally, the shelf life of liquid form is 6 months at -20°C/-80°C. The shelf life of lyophilized form is 12 months at -20°C/-80°C.
Uniprot No.	Q9NZN1
Form	Lyophilized powder
Storage Buffer	Lyophilized from a 0.2 µm filtered PBS, 6% Trehalose, pH 7.4
Product Type	Recombinant Protein
Immunogen Species	Homo sapiens (Human)
Biological Activity	Measured by its binding ability in a functional ELISA. Immobilized Human PTPRD protein (CSB-MP019051HU(A4)) at 2 µg/mL can bind Human IL1RAPL1 protein. The EC50 is 2.645-3.098 ng/mL.
Purity	Greater than 95% as determined by SDS-PAGE. Greater than 95% as determined by SEC-HPLC.
Sequence	LKVVTKRGSADGCTDWSIDIKKYQVLVGEVRIKCALFYGYIRTNYSLAQSAGL SLMWYKSSGPGDFEPIAFDGSRMSKEEDSIWFRPTLLQDSGLYACVIRNSTY CMKVSISLTVGENDTGLCYNSKMKYFEKAELSKSKEISCRDIEDFLLPTREPEIL WYKECRTKTWRPSIVFKRDTLLIREVREDDIGNYTCELKYGGFVVRRTTELTVT APLTDKPPKLLYPMESKLTIQETQLGDSANLTCRAFFGYSGDVSPLIYWMKGE KFIEDLDENRVWESDIRILKEHLGEQEVSI SLIVDSVEEGDLGNYSYVENGNG RRHASVLLHKRELMYT
Source	Mammalian cell
Target Names	IL1RAPL1
Expression Region	19-357aa
Notes	Repeated freezing and thawing is not recommended. Store working aliquots at 4°C for up to one week.
Tag Info	C-terminal hFc1-tagged
Mol. Weight	66.4 kDa
Protein Length	Partial
Image	



(Tris-Glycine gel) Discontinuous SDS-PAGE (reduced) with 5% enrichment gel and 15% separation gel.



Activity
 Measured by its binding ability in a functional ELISA. Immobilized Human PTPRD protein (CSB-MP019051HU(A4)) at 2 μ g/ml can bind Human IL1RRAPL1 protein. The EC_{50} is 2.645-3.098 ng/mL.



The purity of IL1RRAPL1 was greater than 95% as determined by SEC-HPLC

Endotoxin

Less than 1.0 EU/ug as determined by LAL method.

Reconstitution

We recommend that this vial be briefly centrifuged prior to opening to bring the contents to the bottom. Please reconstitute protein in deionized sterile water to a concentration of 0.1-1.0 mg/mL. We recommend to add 5-50% of glycerol (final concentration) and aliquot for long-term storage at -20°C/-80°C. Our default final concentration of glycerol is 50%. Customers could use it as reference.

Shelf Life

The shelf life is related to many factors, storage state, buffer ingredients, storage temperature and the stability of the protein itself.

Generally, the shelf life of liquid form is 6 months at -20°C/-80°C. The shelf life of lyophilized form is 12 months at -20°C/-80°C.