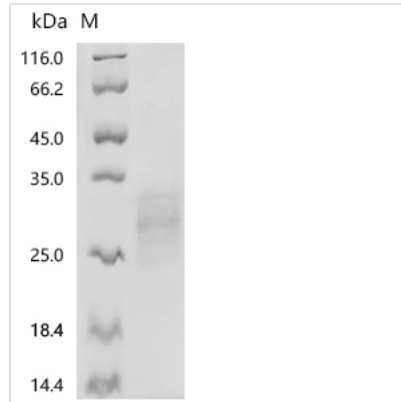


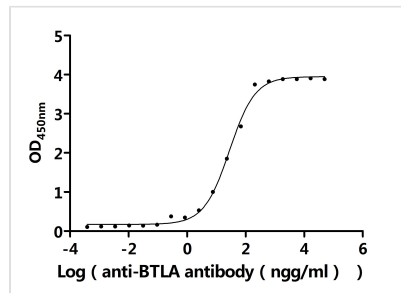


Recombinant *Macaca fascicularis* B- and T-lymphocyte attenuator (BTLA), partial (Active)

Product Code	CSB-MP4897MOV
Abbreviation	Recombinant <i>Cynomolgus</i> monkey BTLA protein, partial (Active)
Storage	The shelf life is related to many factors, storage state, buffer ingredients, storage temperature and the stability of the protein itself. Generally, the shelf life of liquid form is 6 months at -20°C/-80°C. The shelf life of lyophilized form is 12 months at -20°C/-80°C.
Uniprot No.	A0A2K5W7M7
Form	Lyophilized powder
Storage Buffer	Lyophilized from a 0.2 µm sterile filtered PBS, 6% Trehalose, pH 7.4
Product Type	Recombinant Protein
Immunogen Species	<i>Macaca fascicularis</i> (Crab-eating macaque) (<i>Cynomolgus</i> monkey)
Biological Activity	Measured by its binding ability in a functional ELISA. Immobilized <i>Macaca fascicularis</i> BTLA at 2 µg/mL can bind Anti-BTLA recombinant antibody (CSB-RA773799MA1HU). The EC50 is 24.78-31.87 ng/mL.
Purity	Greater than 95% as determined by SDS-PAGE.
Sequence	KESCDVQLYIKRQSYHSIFAGDPFKLECPVKYCAHRPQVTWCKLNGTTCVKLE GRHTSWKQEKNLSFFILHFEPVLPDNGSYRCSANFLSAIIESHSTTLYVTDVK SASERPSKDEMASRP
Source	Mammalian cell
Target Names	BTLA
Expression Region	31-152aa
Notes	Repeated freezing and thawing is not recommended. Store working aliquots at 4°C for up to one week.
Tag Info	C-terminal 10xHis-tagged
Mol. Weight	15.3 kDa
Protein Length	Partial
Image	



(Tris-Glycine gel) Discontinuous SDS-PAGE (reduced) with 5% enrichment gel and 15% separation gel.



Activity

Measured by its binding ability in a functional ELISA. Immobilized *Macaca fascicularis* BTLA at 2 µg/ml can bind Anti-BTLA recombinant antibody (CSB-RA773799MA1HU). The EC₅₀ is 24.78-31.87 ng/mL.

Endotoxin

Less than 1.0 EU/ug as determined by LAL method.

Reconstitution

We recommend that this vial be briefly centrifuged prior to opening to bring the contents to the bottom. Please reconstitute protein in deionized sterile water to a concentration of 0.1-1.0 mg/mL. We recommend to add 5-50% of glycerol (final concentration) and aliquot for long-term storage at -20°C/-80°C. Our default final concentration of glycerol is 50%. Customers could use it as reference.

Shelf Life

The shelf life is related to many factors, storage state, buffer ingredients, storage temperature and the stability of the protein itself.

Generally, the shelf life of liquid form is 6 months at -20°C/-80°C. The shelf life of lyophilized form is 12 months at -20°C/-80°C.