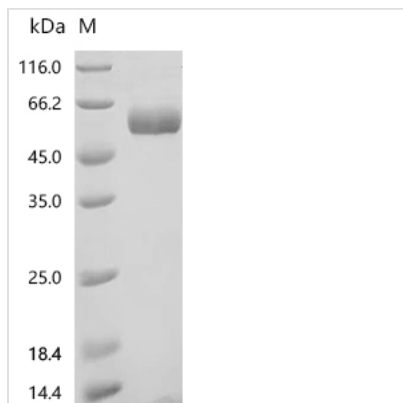




Recombinant Human Dipeptidyl peptidase 1 (CTSC) (Active)

Product Code	CSB-MP006186HU
Abbreviation	Recombinant Human CTSC protein (Active)
Storage	The shelf life is related to many factors, storage state, buffer ingredients, storage temperature and the stability of the protein itself. Generally, the shelf life of liquid form is 6 months at -20°C/-80°C. The shelf life of lyophilized form is 12 months at -20°C/-80°C.
Uniprot No.	P53634
Form	Lyophilized powder
Storage Buffer	Lyophilized from a 0.2 µm sterile filtered 12.5 mM MES, 75 mM NaCl, 6% Trehalose, pH 6.5
Product Type	Recombinant Protein
Immunogen Species	Homo sapiens (Human)
Biological Activity	Measured by its ability to cleave the fluorogenic peptide substrate, Gly-Arg-7-amido-4-methylcoumarin (GR-AMC). The specific activity is >200 pmol/min/µg. The Human CTSC needs to be activated by Human CTSL (CSB-MP006193HU(A4)).
Purity	Greater than 95% as determined by SDS-PAGE.
Sequence	DTPANCTYLDLLGTWVVFQVGSSGSQRDVMNCSVMGPQEKKVVVYLQKLDTAY DDLGNSTGHFTIINYNQGFIVLNDYKWFVAFKYEKGGSKVTTCNETMTGWVHD VLGRNWACFTGKKVGTASENVVNIHLKNSQEKYSNRLYKYDHNFKAINAI QKSWTATTYMEYETLTLGDMIRRSRGGHSRKPAPLTAIEIQQKILHLPTSW DWRNVHGINFVSPVRNQASCGSCYSFASMGMLEARIRILTNNSTPILSPQEV VSCSQYAQGCCEGFPYLIAGKYAQDFGLVEEACFPYTGTDSPCKMKEDCFRY YSSEYHYVGGFYGGCNEALMKLELVHHGPMVAFAFEVYDDFLHYKKGIYHHTG LRDPFNPFLTNHAVLLVGYGTDSASGMDYWIVKNSWGTGWGENGYFRIRR GTDECAIESIAVAATPIPKL
Source	Mammalian cell
Target Names	CTSC
Expression Region	25-463aa
Notes	Repeated freezing and thawing is not recommended. Store working aliquots at 4°C for up to one week.
Tag Info	C-terminal 10xHis-tagged
Mol. Weight	50.9 kDa
Protein Length	Full Length of Mature Protein
Image	



(Tris-Glycine gel) Discontinuous SDS-PAGE (reduced) with 5% enrichment gel and 15% separation gel.

Activation protein	Human CTSL (CSB-MP006193HU(A4))	
Enzyme	Human CTSC (CSB-MP006186HU)	0.125 μ g/well
Substrate	GR-AMC (AbMole, M54383, 5mg)	10 μ M
Reaction system	/	100 μ l
Reaction conditions	37°C and 5min in dark	/
Activation Buffer	25mM MES, 5mM DTT, pH 6.0	
Assay Buffer	25mM MES, 50mM NaCl, 5mM DTT, pH 6.0	
Enzyme activity unit (pmol/min/μg)	>200 pmol/min/ μ g	

Activity

Measured by its ability to cleave the fluorogenic peptide substrate, Gly-Arg-7-amido-4-methylcoumarin (GR-AMC). The specific activity is >200 pmol/min/ μ g. The Human CTSC needs to be activated by Human CTSL (CSB-MP006193HU(A4)).

Endotoxin

Less than 1.0 EU/ μ g as determined by LAL method.

Reconstitution

We recommend that this vial be briefly centrifuged prior to opening to bring the contents to the bottom. Please reconstitute protein in deionized sterile water to a concentration of 0.1-1.0 mg/mL. We recommend to add 5-50% of glycerol (final concentration) and aliquot for long-term storage at -20°C/-80°C. Our default final concentration of glycerol is 50%. Customers could use it as reference.

Shelf Life

The shelf life is related to many factors, storage state, buffer ingredients, storage temperature and the stability of the protein itself.

Generally, the shelf life of liquid form is 6 months at -20°C/-80°C. The shelf life of lyophilized form is 12 months at -20°C/-80°C.