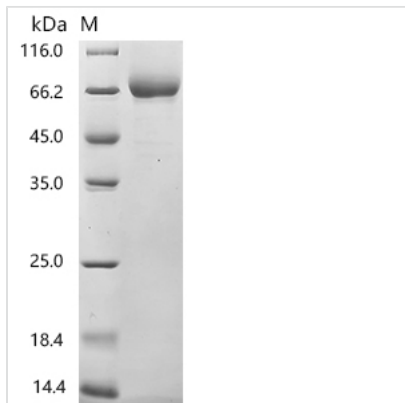


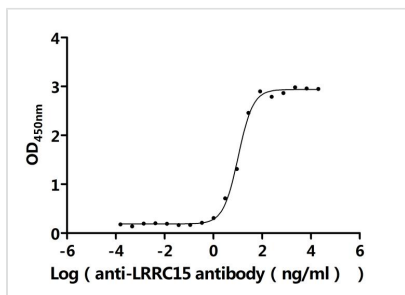


Recombinant Human Leucine-rich repeat-containing protein 15 (LRRC15), partial (Active)

Product Code	CSB-MP819484HU
Abbreviation	Recombinant Human LRRC15 protein, partial (Active)
Storage	The shelf life is related to many factors, storage state, buffer ingredients, storage temperature and the stability of the protein itself. Generally, the shelf life of liquid form is 6 months at -20°C/-80°C. The shelf life of lyophilized form is 12 months at -20°C/-80°C.
Uniprot No.	Q8TF66
Form	Lyophilized powder
Storage Buffer	Lyophilized from a 0.2 µm filtered PBS, 6% Trehalose, pH 7.4
Product Type	Recombinant Protein
Immunogen Species	Homo sapiens (Human)
Biological Activity	Measured by its binding ability in a functional ELISA. Immobilized Human LRRC15 at 2 µg/mL on an Nickel Coated plate can bind Anti-LRRC15 recombinant antibody (CSB-RA819484MA1HU). The EC50 is 12.18-15.75 ng/mL.
Purity	Greater than 90% as determined by SDS-PAGE.
Sequence	YHGCPSECTCSRASQVECTGARIVAVPTPLPWNAMSLQILNTHITELNESPFLN ISALIALRIEKNELSRITPGAFRNLGSLRYLSLANNKLQVLPIGLFGQLDSLESLLL SSNQLLQIQPAHFSQCSNLKELQLHGNHLEYIPDGAFDHLVGLTKLNLGKNSLT HISPRVFQHLGNLQVLRLYENRLTDIPMGTFDGLVNLQELALQQNQIGLLSPGL FHNNHNLQRLYLSNNHISQLPPSVFMQLPQLNRLTLFGNSLKEKELSPGIFGPMP NLRELWLYDNHISLDPDNVFSNLRQLQVLILSRNQISFISPGAFNGLTELRELSL HTNALQDLDGNVFRMLANLQNISLQNNRRLRQLPGNIFANVNGLMAIQLQNNQL ENLPLGIFDHLGKLCERLYDNPWRCDSDILPLRNWLLLNPRLGTDTVPVCF SPANVRGQSLIIINVNAVPSVHVPEVPSYPETPWYPDTPSYDPTTSVSSSTTEL TSPVEDYDTLTTIQVTDDRSVWGMTQAQSG
Source	Mammalian cell
Target Names	LRRC15
Expression Region	22-538aa
Notes	Repeated freezing and thawing is not recommended. Store working aliquots at 4°C for up to one week.
Tag Info	C-terminal 10xHis-tagged
Mol. Weight	60.5 kDa
Protein Length	Partial
Image	



(Tris-Glycine gel) Discontinuous SDS-PAGE (reduced) with 5% enrichment gel and 15% separation gel.



Activity
Measured by its binding ability in a functional ELISA. Immobilized Human LRRC15 at 2 µg/ml on an Nickel Coated plate can bind Anti-LRRC15 recombinant antibody (CSB-RA819484MA1HU). The EC₅₀ is 12.18-15.75 ng/mL.

Endotoxin

Less than 1.0 EU/ug as determined by LAL method.

Reconstitution

We recommend that this vial be briefly centrifuged prior to opening to bring the contents to the bottom. Please reconstitute protein in deionized sterile water to a concentration of 0.1-1.0 mg/mL. We recommend to add 5-50% of glycerol (final concentration) and aliquot for long-term storage at -20°C/-80°C. Our default final concentration of glycerol is 50%. Customers could use it as reference.

Shelf Life

The shelf life is related to many factors, storage state, buffer ingredients, storage temperature and the stability of the protein itself. Generally, the shelf life of liquid form is 6 months at -20°C/-80°C. The shelf life of lyophilized form is 12 months at -20°C/-80°C.