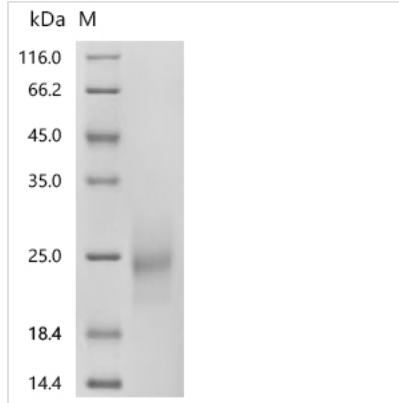




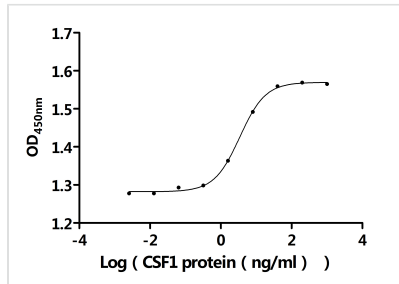
# Recombinant Human Macrophage colony-stimulating factor 1 (CSF1), partial (Active)

<b>Product Code</b>	CSB-MP006043HU1
<b>Abbreviation</b>	Recombinant Human CSF1 protein, partial (Active)
<b>Storage</b>	The shelf life is related to many factors, storage state, buffer ingredients, storage temperature and the stability of the protein itself. Generally, the shelf life of liquid form is 6 months at -20°C/-80°C. The shelf life of lyophilized form is 12 months at -20°C/-80°C.
<b>Uniprot No.</b>	P09603
<b>Form</b>	Lyophilized powder
<b>Storage Buffer</b>	Lyophilized from a 0.2 µm filtered PBS, 6% Trehalose, pH 7.4
<b>Product Type</b>	Recombinant Protein
<b>Immunogen Species</b>	Homo sapiens (Human)
<b>Biological Activity</b>	<p>①The ED50 as determined by the dose-dependent stimulation of the proliferation of THP-1 cells is 2.880-4.115 ng/mL.</p> <p>②Measured by its binding ability in a functional ELISA. Immobilized Human CSF1 protein at 2 µg/mL can bind Anti-CSF1 recombinant antibody (CSB-RA006043MA1HU). The EC50 is 4.291-4.988 ng/mL.</p> <p>③Measured by its binding ability in a functional ELISA. Immobilized Human CSF1 protein at 2 µg/mL can bind Human CSF1R protein (CSB-MP006044HU). The EC50 is 37.37-43.34 ng/mL.</p>
<b>Purity</b>	Greater than 95% as determined by SDS-PAGE.
<b>Sequence</b>	EEVSEYCSHMIGSGHLQSLQRLIDSQMETSQCITFEFVDQEQLKDPVCYLKKA FLLVQDIMEDTMRFRDNTPNIAIVQLQELSLRLKSCFTKDYEEHDKACVRTFY ETPLQLLEKVKNVFNETKNLLDKDWNIFSKNCSNSFAECSSQDVVTKPDCN
<b>Source</b>	Mammalian cell
<b>Target Names</b>	CSF1
<b>Expression Region</b>	33-190aa
<b>Notes</b>	Repeated freezing and thawing is not recommended. Store working aliquots at 4°C for up to one week.
<b>Tag Info</b>	N-terminal 10xHis-tagged
<b>Mol. Weight</b>	21.2 kDa
<b>Protein Length</b>	Partial

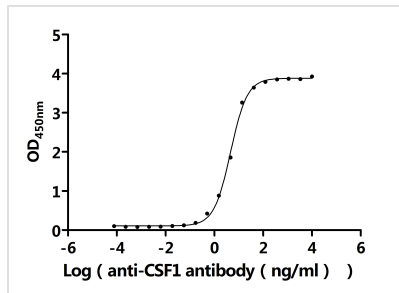
Image



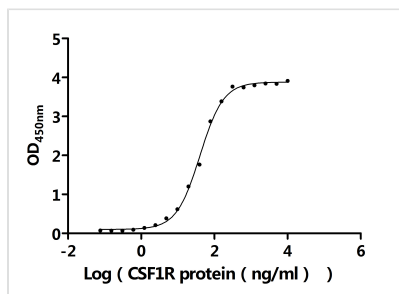
(Tris-Glycine gel) Discontinuous SDS-PAGE (reduced) with 5% enrichment gel and 15% separation gel.



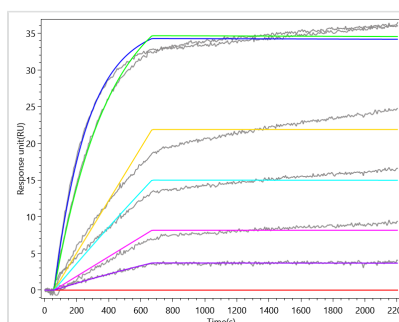
**Activity**  
The ED<sub>50</sub> as determined by the dose-dependent stimulation of the proliferation of THP-1 cells is 2.880-4.115 ng/mL.



**Activity**  
Measured by its binding ability in a functional ELISA. Immobilized Human CSF1 protein at 2 µg/ml can bind Anti-CSF1 recombinant antibody (CSB-RA006043MA1HU). The EC<sub>50</sub> is 4.291-4.988 ng/mL.



**Activity**  
Measured by its binding ability in a functional ELISA. Immobilized Human CSF1 protein at 2 µg/ml can bind Human CSF1R protein (CSB-MP006044HU). The EC<sub>50</sub> is 37.37-43.34 ng/mL.



CSF1 Recombinant Monoclonal Antibody (CSB-RA006043MA1HU) captured on Protein A Chip can bind Recombinant Human CSF1 protein with an affinity constant of 0.13 nM as detected by MetaSPR Assay (WeSPRTM 200).

**Endotoxin**

Less than 1.0 EU/ug as determined by LAL method.



---

**Reconstitution**

We recommend that this vial be briefly centrifuged prior to opening to bring the contents to the bottom. Please reconstitute protein in deionized sterile water to a concentration of 0.1-1.0 mg/mL. We recommend to add 5-50% of glycerol (final concentration) and aliquot for long-term storage at -20°C/-80°C. Our default final concentration of glycerol is 50%. Customers could use it as reference.

---

**Shelf Life**

The shelf life is related to many factors, storage state, buffer ingredients, storage temperature and the stability of the protein itself. Generally, the shelf life of liquid form is 6 months at -20°C/-80°C. The shelf life of lyophilized form is 12 months at -20°C/-80°C.