

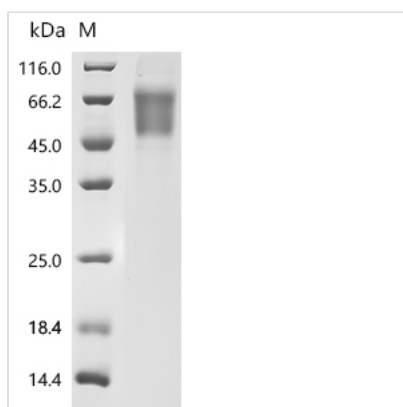


Recombinant *Macaca fascicularis* sialic acid-binding Ig-like lectin 9 isoform X1 (SIGLEC9), partial (Active)

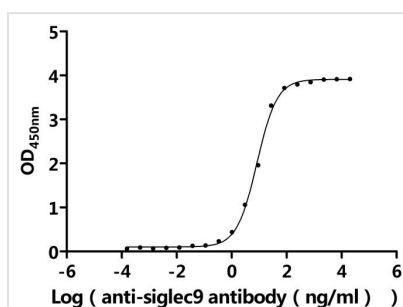
Product Code	CSB-MP5403MOV
Abbreviation	Recombinant <i>Cynomolgus</i> monkey SIGLEC9 protein, partial (Active)
Storage	The shelf life is related to many factors, storage state, buffer ingredients, storage temperature and the stability of the protein itself. Generally, the shelf life of liquid form is 6 months at -20°C/-80°C. The shelf life of lyophilized form is 12 months at -20°C/-80°C.
Uniprot No.	XP_005590140.1
Form	Lyophilized powder
Storage Buffer	Lyophilized from a 0.2 µm sterile filtered PBS, 6% Trehalose, pH 7.4
Product Type	Recombinant Protein
Immunogen Species	<i>Macaca fascicularis</i> (Crab-eating macaque) (<i>Cynomolgus</i> monkey)
Biological Activity	① Measured by its binding ability in a functional ELISA. Immobilized <i>Macaca fascicularis</i> SIGLEC9 at 2 µg/mL can bind anti-SIGLEC9 recombinant antibody (CSB-RA021303MA2HU). The EC ₅₀ is 7.698-8.925 ng/mL. ② SIGLEC9 Recombinant Monoclonal Antibody (CSB-RA021303MA2HU) captured on Protein A Chip can bind <i>Macaca fascicularis</i> SIGLEC9 with an affinity constant of 4.34 nM as detected by MetaSPR Assay (WeSPRTM 200).
Purity	Greater than 95% as determined by SDS-PAGE.
Sequence	QRNNQKNYPLTMQESVTVQQGLCVHVLCSFSYPWYGWISSDPVHGYWFRA GAHTDRDAPVATNNPARAVREDTRDRFHLLGDPQTKNCTLSIRDARSSDAGT YFFRVETGKTKWNYKYVPLSVHVTALHTRPNILIPGTLESGCPRNLTCSVPWA CEQGTAPMISWMGTSVSPLDPSTTRSSVLTLPQPQDHGTSLTCQVTFPGASV TTNKTIHLNVSYPQNLMTVFQGNQDTSIVLGNQSSVSVPEGPSRLVCAVD SNPPARLSLSWGGLTLCPSQPSNPGVLELPRVHLRDEEEFTCRAQNLLGSQR VSLNVSLQSKATSGLTQG
Source	Mammalian cell
Target Names	SIGLEC9
Expression Region	20-350aa
Notes	Repeated freezing and thawing is not recommended. Store working aliquots at 4°C for up to one week.
Tag Info	C-terminal 10xHis-tagged
Mol. Weight	37.5 kDa
Protein Length	Partial



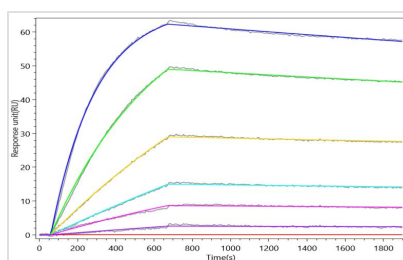
Image



(Tris-Glycine gel) Discontinuous SDS-PAGE (reduced) with 5% enrichment gel and 15% separation gel.



Activity
Measured by its binding ability in a functional ELISA. Immobilized *Macaca fascicularis* SIGLEC9 at 2 µg/ml can bind anti-SIGLEC9 recombinant antibody (CSB-RA021303MA2HU). The EC₅₀ is 7.698-8.925 ng/mL.



Activity
SIGLEC9 Recombinant Monoclonal Antibody (CSB-RA021303MA2HU) captured on Protein A Chip can bind *Macaca fascicularis* SIGLEC9 with an affinity constant of 4.34 nM as detected by MetaSPR Assay (WeSPRTM 200).

Endotoxin

Less than 1.0 EU/ug as determined by LAL method.

Reconstitution

We recommend that this vial be briefly centrifuged prior to opening to bring the contents to the bottom. Please reconstitute protein in deionized sterile water to a concentration of 0.1-1.0 mg/mL. We recommend to add 5-50% of glycerol (final concentration) and aliquot for long-term storage at -20°C/-80°C. Our default final concentration of glycerol is 50%. Customers could use it as reference.

Shelf Life

The shelf life is related to many factors, storage state, buffer ingredients, storage temperature and the stability of the protein itself. Generally, the shelf life of liquid form is 6 months at -20°C/-80°C. The shelf life of lyophilized form is 12 months at -20°C/-80°C.