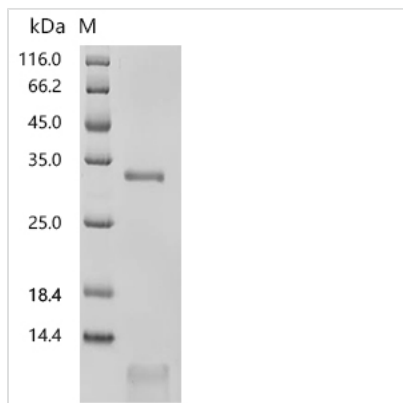




# Recombinant Human Procathepsin L (CTSL) (Active)

<b>Product Code</b>	CSB-MP006193HU(A4)
<b>Abbreviation</b>	Recombinant Human CTSL protein (Active)
<b>Storage</b>	The shelf life is related to many factors, storage state, buffer ingredients, storage temperature and the stability of the protein itself. Generally, the shelf life of liquid form is 6 months at -20°C/-80°C. The shelf life of lyophilized form is 12 months at -20°C/-80°C.
<b>Uniprot No.</b>	P07711
<b>Form</b>	Lyophilized powder
<b>Storage Buffer</b>	Lyophilized from a 0.2 µm sterile filtered 50 mM NaAc, 0.5 M NaCl, 6% Trehalose, pH 4.5
<b>Product Type</b>	Recombinant Protein
<b>Immunogen Species</b>	Homo sapiens (Human)
<b>Biological Activity</b>	Measured by its ability to cleave the fluorogenic peptide substrate Z-LR-AMC, The specific activity is >32000 pmol/ min/µg.
<b>Purity</b>	Greater than 90% as determined by SDS-PAGE.
<b>Sequence</b>	TLTFDHSLEAQWTKWKAMHNRLYGMNEEGWRRRAVWEKNMKMIELHNQEYR EGKHSFTMAMNAFGDMTSEEFRQVMNGFQNRKPRKGKVFQEPLFYEAPRSV DWREKGYVTPVKNQGQCGSCWAFSATGALEGQMFRKTGRLISLSEQNLVDC SGPQGNEGCNGGLMDYAFQYVQDNGGLDSEESYPYEATEESCKYNPKYSVA NDTGFVDIPKQEKALMKAVATVGPISVAIDAGHESFLFYKEGIYFEPDCSSEDM DHGVLVVG YGFESTESDNNKYWLVKNSWGE EWGMGGYVKMAKDRRNHCGI ASAASYPTV
<b>Source</b>	Mammalian cell
<b>Target Names</b>	CTSL
<b>Expression Region</b>	18-333aa
<b>Notes</b>	Repeated freezing and thawing is not recommended. Store working aliquots at 4°C for up to one week.
<b>Tag Info</b>	C-terminal 10xHis-tagged
<b>Mol. Weight</b>	37.2 kDa
<b>Protein Length</b>	Full Length
<b>Image</b>	



(Tris-Glycine gel) Discontinuous SDS-PAGE (reduced) with 5% enrichment gel and 15% separation gel.

<b>Enzyme</b>	Human CTSL (CSB-MP006193HU(A4))	0.00390625µg/well
<b>Substrate</b>	Z-Leu-Arg-AMC (R&D, Catalog # E5008)	50µM
<b>Reaction system</b>	/	100µl
<b>Reaction conditions</b>	37°C and 20min in dark	/
<b>Buffer</b>	50 mM MES, 5 mM DTT, 1 mM EDTA, 0.005% (w/v) Brj-35, pH 6.0	/
<b>Enzyme activity unit (U/mg)</b>	>32000 pmol/ min/µg	/

#### Activity

Measured by its ability to cleave the fluorogenic peptide substrate Z-LR-AMC, The specific activity is >32000 pmol/ min/µg.

#### Endotoxin

Less than 1.0 EU/ug as determined by LAL method.

#### Reconstitution

We recommend that this vial be briefly centrifuged prior to opening to bring the contents to the bottom. Please reconstitute protein in deionized sterile water to a concentration of 0.1-1.0 mg/mL. We recommend to add 5-50% of glycerol (final concentration) and aliquot for long-term storage at -20°C/-80°C. Our default final concentration of glycerol is 50%. Customers could use it as reference.

#### Shelf Life

The shelf life is related to many factors, storage state, buffer ingredients, storage temperature and the stability of the protein itself.

Generally, the shelf life of liquid form is 6 months at -20°C/-80°C. The shelf life of lyophilized form is 12 months at -20°C/-80°C.