



Recombinant Human Insulin-like growth factor 1 receptor (IGF1R), partial (Active)

Product Code	CSB-MP011087HU1
Abbreviation	Recombinant Human IGF1R protein, partial (Active)
Storage	The shelf life is related to many factors, storage state, buffer ingredients, storage temperature and the stability of the protein itself. Generally, the shelf life of liquid form is 6 months at -20°C/-80°C. The shelf life of lyophilized form is 12 months at -20°C/-80°C.
Uniprot No.	P08069
Form	Lyophilized powder
Storage Buffer	Lyophilized from a 0.2 μm sterile filtered PBS, 6% Trehalose, pH 7.4
Product Type	Recombinant Protein
Immunogen Species	Homo sapiens (Human)
Biological Activity	Measured by its binding ability in a functional ELISA. Immobilized Human IGF1R at 2 μg/mL can bind Anti-IGF1R recombinant antibody (CSB-RA011087MA2HU). The EC50 is 1.479-1.702 ng/mL.
Purity	Greater than 90% as determined by SEC-HPLC. Greater than 95% as determined by SDS-PAGE.
Sequence	EICGPGIDIRNDYQQLKRELENCTVIEGYLHILLISKAEDYRSYRFPKLTVITEYLLL FRVAGLESGLDFPNLTVIRGWKLFYNYALVIFEMTNLKDIGLYNLRNITRGAIRI EKNADLCYLSTVDWSLILDAVSNNYIVGNKPPKECGDLCPGTMEEKPMCEKTT INNEYNYRCWTTNRCQKMCPSTCGKRACTENNECCHPECLGSCSAPDNDTA CVACRHYYYAGVCVPACPPNTYRFEGWRCVDRDFCANILSAESSDSEGFVIH DGECMQECPSGFIRNGSQSMYCIPCEGPCPKVCEEEKTKTIDSVTSAQMLQ GCTIFKGNLLINIRRGNNIASELENFMGLIEVVTGYVKIRHSHALVLSLFLKNLRLI LGEEQLEGNYSFYVLDNQNQLQQLWDWDHRNLTIKAGKMYFAFNPKLCVSEIY RMEEVTGTKGRQSKGDINTRNNGERASCESDVLHFTSTTTSKNRIITWHRYSR PPDYRDLISFTVYYYKEAPFKNVTEYDGGQDACGSNSWNMVDVLDLPPNKDVEPG ILLHGLKPWTQYAVVYKAVTLTMVENDHIRGAKSEILYIRTNASVPSIPLDVLSA SNSSSQLIVKWNPPSLPNGNLSYIVRWQRQPQDGYLYRHNYCSKDKIPIRKY ADGTIDIEEVTENPKTEVCGGEKGPCCACPKTEAEKQAEKEEAAYRKFVFNFL HNSIFVPRPERKRRDVMQVANTTMSSRSRNTTAADTYNITDPEELETEYPPFE SRVDNKERTVISNLRPFTLYRIDIHSCNHEAEKLGCSASNFVFARTMPAEGADD IPGPVTWEPRPENSIFLKWPEPENPNGLILMYEIKYGSQVEDQRECVSRQEYR KYGGAKLNRLNPGNYTARIQATSLSGNGSWTDPVFFYVQAKTGYEN
Source	Mammalian cell
Target Names	IGF1R
Expression Region	31-932aa
Notes	Repeated freezing and thawing is not recommended. Store working aliquots at



4°C for up to one week.

Tag Info

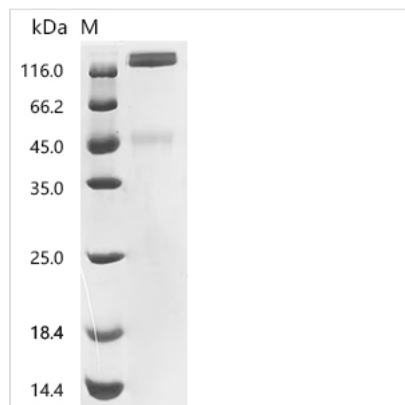
C-terminal 10xHis-tagged

Mol. Weight

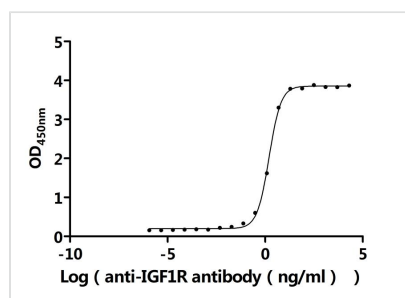
104.2 kDa

Protein Length

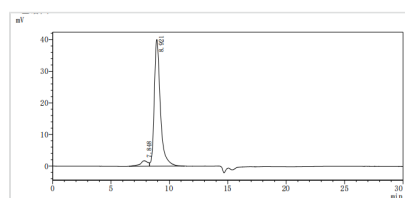
Partial

Image


(Tris-Glycine gel) Discontinuous SDS-PAGE (reduced) with 5% enrichment gel and 15% separation gel.


Activity

Measured by its binding ability in a functional ELISA. Immobilized Human IGF1R at 2 µg/ml can bind Anti-IGF1R recombinant antibody (CSB-RA011087MA2HU). The EC₅₀ is 1.479-1.702 ng/mL.



The purity of IGF1R was greater than 90% as determined by SEC-HPLC

Endotoxin

Less than 1.0 EU/ug as determined by LAL method.

Reconstitution

We recommend that this vial be briefly centrifuged prior to opening to bring the contents to the bottom. Please reconstitute protein in deionized sterile water to a concentration of 0.1-1.0 mg/mL. We recommend to add 5-50% of glycerol (final concentration) and aliquot for long-term storage at -20°C/-80°C. Our default final concentration of glycerol is 50%. Customers could use it as reference.

Shelf Life

The shelf life is related to many factors, storage state, buffer ingredients, storage temperature and the stability of the protein itself.

Generally, the shelf life of liquid form is 6 months at -20°C/-80°C. The shelf life of lyophilized form is 12 months at -20°C/-80°C.