

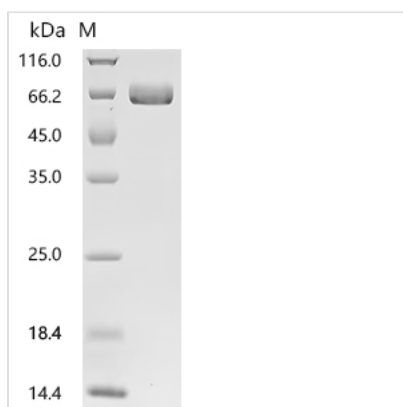


Recombinant Human Ephrin type-A receptor 2 (EPHA2F), partial (Active)

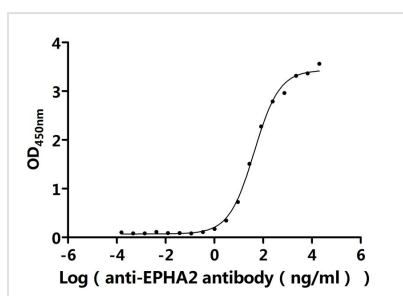
Product Code	CSB-MP007722HUd7
Abbreviation	Recombinant Human EPHA2 protein, partial (Active)
Storage	The shelf life is related to many factors, storage state, buffer ingredients, storage temperature and the stability of the protein itself. Generally, the shelf life of liquid form is 6 months at -20°C/-80°C. The shelf life of lyophilized form is 12 months at -20°C/-80°C.
Uniprot No.	P29317
Form	Lyophilized powder
Storage Buffer	Lyophilized from a 0.2 µm filtered PBS, 6% Trehalose, pH 7.4
Product Type	Recombinant Protein
Immunogen Species	Homo sapiens (Human)
Biological Activity	①Measured by its binding ability in a functional ELISA. Immobilized Human EPHA2 at 2 µg/mL can bind Anti-EPHA2 recombinant antibody (CSB-RA007722MA1HU). The EC50 is 36.24-50.53 ng/mL.②Measured by its binding ability in a functional ELISA. Immobilized Human EPHA2 at 2 µg/mL can bind Human EFNA1 (CSB-MP007460HU). The EC50 is 5.859-7.758 ng/mL.
Purity	Greater than 95% as determined by SDS-PAGE.
Sequence	AQGKEVLLDFAAAGGELGWLTHPYGKGWDLMQNIMNDMPIYMYSCNVMS GDQDNWLR TNWVYRGEAERIFIELKFTVRDCNSFPGGASSCKETFNLYAES DLDYGTNFQKRLFTKIDTIAPDEITVSSDFEARHVKLNVEERSVGPLTRKGFYLA FQDIGACVALLSVRVYYKKCPPELLQGLAHFPETIAGSDAPSLATVAGTCVDHAV VPPGGEEPRMHCAVDGEWLVPIGQCLCQAGYEKVEDACQACSPGFFKFEAS ESPCLECPEHTLPSPEGATSCECEEGFFRAPQDPASMPCTRPPSAPHYLTAV GMGAKVELRWTPPQDSGGREDIVYSVTCEQCWPESGECGPCEASVRYSEPP HGLTRTSVTVSDLEPHMNYTFTVEARNGVSGLVTSRSFRTASVSINQTEPPKV RLEGRSTTSLSVSWSIPPPQQSRVWKYEVTYRKKGDSNSYNVRRTEGFSVTL DDLAPDTTYLVQVQALTQEGQGAGSKVHEFQTLSPGSGN
Source	Mammalian cell
Target Names	EPHA2
Expression Region	24-534aa
Notes	Repeated freezing and thawing is not recommended. Store working aliquots at 4°C for up to one week.
Tag Info	C-terminal 10xHis-tagged
Mol. Weight	57.7 kDa
Protein Length	Partial



Image

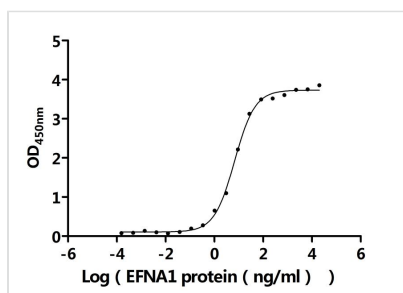


(Tris-Glycine gel) Discontinuous SDS-PAGE (reduced) with 5% enrichment gel and 15% separation gel.



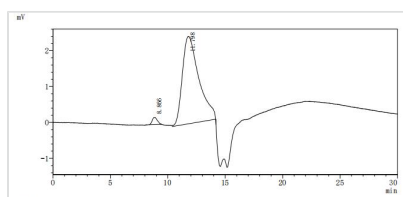
Activity

Measured by its binding ability in a functional ELISA. Immobilized Human EPHA2 at 2 μ g/ml can bind Anti-EPHA2 recombinant antibody (CSB-RA007722MA1HU). The EC_{50} is 36.24-50.53 ng/mL.



Activity

Measured by its binding ability in a functional ELISA. Immobilized Human EPHA2 at 2 μ g/ml can bind Human EFNA1 (CSB-MP007460HU). The EC_{50} is 5.859-7.758 ng/mL.



Greater than 95% as determined by SDS-PAGE.
Greater than 95% as determined by SEC-HPLC.

Endotoxin

Less than 1.0 EU/ug as determined by LAL method.

Reconstitution

We recommend that this vial be briefly centrifuged prior to opening to bring the contents to the bottom. Please reconstitute protein in deionized sterile water to a concentration of 0.1-1.0 mg/mL. We recommend to add 5-50% of glycerol (final concentration) and aliquot for long-term storage at -20°C/-80°C. Our default final concentration of glycerol is 50%. Customers could use it as reference.

Shelf Life

The shelf life is related to many factors, storage state, buffer ingredients, storage temperature and the stability of the protein itself.

Generally, the shelf life of liquid form is 6 months at -20°C/-80°C. The shelf life of lyophilized form is 12 months at -20°C/-80°C.