

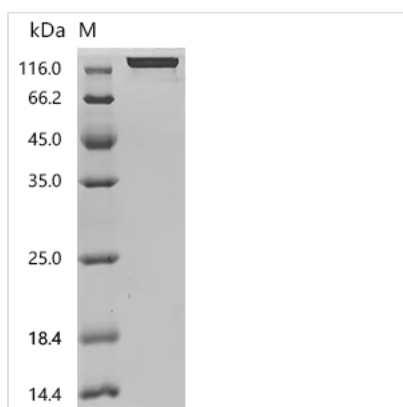


# Recombinant *Macaca fascicularis* Neural cell adhesion molecule L1 (L1CAM), partial (Active)

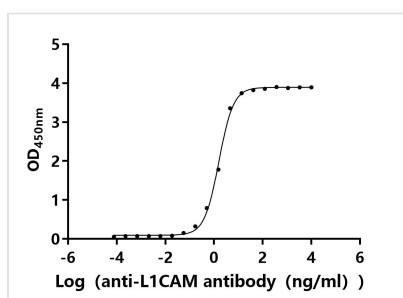
<b>Product Code</b>	CSB-MP6775MOV
<b>Abbreviation</b>	Recombinant Cynomolgus monkey L1CAM protein, partial (Active)
<b>Storage</b>	The shelf life is related to many factors, storage state, buffer ingredients, storage temperature and the stability of the protein itself. Generally, the shelf life of liquid form is 6 months at -20°C/-80°C. The shelf life of lyophilized form is 12 months at -20°C/-80°C.
<b>Uniprot No.</b>	A0A2K5URB5
<b>Form</b>	Lyophilized powder
<b>Storage Buffer</b>	Lyophilized from a 0.2 µm sterile filtered PBS, 6% Trehalose, pH 7.4
<b>Product Type</b>	Recombinant Protein
<b>Immunogen Species</b>	<i>Macaca fascicularis</i> (Crab-eating macaque) (Cynomolgus monkey)
<b>Biological Activity</b>	Measured by its binding ability in a functional ELISA. Immobilized <i>Macaca fascicularis</i> L1CAM at 2 µg/mL can bind Anti-L1CAM recombinant antibody(CSB-RA012704MA1HU). The EC50 is 1.496-1.709 ng/mL.
<b>Purity</b>	Greater than 95% as determined by SDS-PAGE. Greater than 95% as determined by SEC-HPLC.
<b>Sequence</b>	IQIPEEYEGHHVMEPPVITEQSPRRLVVFPTDDISLKCEASGKPEVQFRWTRD GVHFKPKEELGVTVYQSPHSGSFTITGNNSNFAQRFQGIYRCFASNKLG TAMS HEIRLMAEGAPKWPKETVKPVEVEEGESVVLPCHPPPSAEPLRIYWMNSKILHI KQDERVTMGQNGNLYFANVLTSDNHSDYICHAHFPGTRTIIQKEPIDLRVKATN SMIDRKPRLLFPTNSSSHLVALQGQPLVLEICIAEGFPPTTIKWLRPSGPMPADR VTYQNHKTLQLLKVGEEEDGGEYRCLAENSLGSARHAYYVTVAAAPYWLHKP QSHLYGPGETARLDCQVQGRPQPEVTWRINGIPMEELAKDQKYRIQRGALILS NAQPSDTMVTQCEARNRHGLLL ANAYIYVVQLPAKILTADNQTYMAVQGSTAY LLCKAFGAPVPSVQWLDEDGTTVLQDERFFPYANGTLGIRD LQANDTGRYFCL AANDQNNVTIVANLKV KDATQITQGPRSAIEKKGSRVTF TCQASFDPSLQPSIT WRGDGRDLQELGDS DKYFIEDGRLVIHSLDYS DQGNYS CVASTELDVVESRA QLLVVGS PGPV PRLVLS DLHLLTQS QVRVSWSPAEDHNAPIEKYDIEFEDKEM APEKWYSLGKVPGNQTSTTLKLS PYVHYTFRVTAINKYGPGEPSVSETVVTP EAAPEKNPVDVKGEGNETTNM VITWKPLRWMDWNAPQVQYRVQWRPQGTR GPWQEQIVSNPFLVVSNTSTFVPEIKVQAVNSQKGPEPQVTIGYSGEDYPQ AIPLEGIEILNSSAVLVKWRPVDLAQVKGHLRGYNVTYWREGSQRKHSKRHI HKDHVVVPANTTSVILSGLRPYSSYHLEVQAFNGRGLGPASEFTFSTPEGVPG HPEALHLECQSNTSLLL RWQPPLSHNGVLTGYVLSYHPLDEGGKGQLSFNLR DPELRTHNLTDLSPHLRYRFQLQATTKEGPGEAIVREGGTMALSGISDFGNISA TAGENYSVVS WVPKEGQC NFRFHILFKALGEEKGGASLSPQYVSYNQSSYTQ WDLQPDTDYEIHLFKERMFRHQMAVKTNGTGRVRLPPAGFATE
<b>Source</b>	Mammalian cell



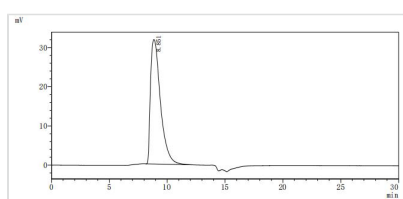
<b>Target Names</b>	L1CAM
<b>Expression Region</b>	20-1120aa
<b>Notes</b>	Repeated freezing and thawing is not recommended. Store working aliquots at 4°C for up to one week.
<b>Tag Info</b>	C-terminal 10xHis-tagged
<b>Mol. Weight</b>	124.5 kDa
<b>Protein Length</b>	Partial

**Image**


(Tris-Glycine gel) Discontinuous SDS-PAGE (reduced) with 5% enrichment gel and 15% separation gel.



**Activity**  
Measured by its binding ability in a functional ELISA. Immobilized *Macaca fascicularis* L1CAM at 2 µg/ml can bind Anti-L1CAM recombinant antibody (CSB-RA012704MA1HU). The EC<sub>50</sub> is 1.496-1.709 ng/mL.



The purity of L1CAM was greater than 95% as determined by SEC-HPLC

<b>Endotoxin</b>	Less than 1.0 EU/ug as determined by LAL method.
<b>Reconstitution</b>	We recommend that this vial be briefly centrifuged prior to opening to bring the contents to the bottom. Please reconstitute protein in deionized sterile water to a concentration of 0.1-1.0 mg/mL. We recommend to add 5-50% of glycerol (final concentration) and aliquot for long-term storage at -20°C/-80°C. Our default final concentration of glycerol is 50%. Customers could use it as reference.
<b>Shelf Life</b>	The shelf life is related to many factors, storage state, buffer ingredients, storage temperature and the stability of the protein itself. Generally, the shelf life of liquid form is 6 months at -20°C/-80°C. The shelf life of lyophilized form is 12 months at -20°C/-80°C.