

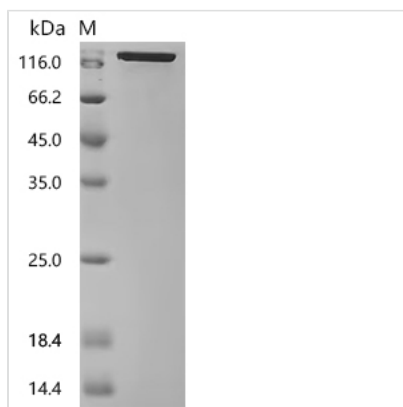


Recombinant Mouse Neural cell adhesion molecule L1 (L1cam), partial (Active)

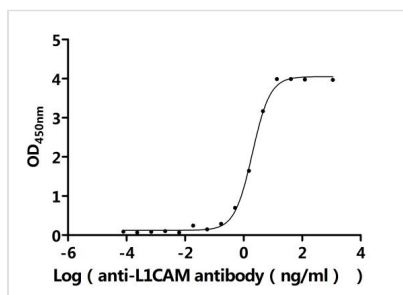
Product Code	CSB-MP012704MO
Abbreviation	Recombinant Mouse L1cam protein, partial (Active)
Storage	The shelf life is related to many factors, storage state, buffer ingredients, storage temperature and the stability of the protein itself. Generally, the shelf life of liquid form is 6 months at -20°C/-80°C. The shelf life of lyophilized form is 12 months at -20°C/-80°C.
Uniprot No.	P11627
Form	Lyophilized powder
Storage Buffer	Lyophilized from a 0.2 µm sterile filtered PBS, 6% Trehalose, pH 7.4
Product Type	Recombinant Protein
Immunogen Species	Mus musculus (Mouse)
Biological Activity	Measured by its binding ability in a functional ELISA. Immobilized Mouse L1cam at 2 µg/mL can bind Anti-L1CAM recombinant antibody(CSB-RA012704MA1HU). The EC50 is 1.827-2.141 ng/mL.
Purity	Greater than 95% as determined by SDS-PAGE. Greater than 95% as determined by SEC-HPLC.
Sequence	IQIPDEYKGGHHVLEPPVITEQSPRRLVVFPTDDISLKCEARGRPQVEFRWTKDG IHFKPKEELGVVHEAPYSGSFTIEGNNSFAQRFQGIYRCYASNKLGTA MSHEI QLVAEGAPKWPKETVKPVEVEEGESVVLPCNPPPSAAPPRIYWMNSKIFDIKQ DERVSMGQNGDLYFANVLTSDNHSDYICNAHFPGTRTIIQKEPIDLRVKPTNSM IDRKPRLLFPTNSSSRLVALQGQSLILECIAEGFPTPTIKWLHPSDPMPTDRVIY QNHNTLQLLNVGEEDDGEYTCLAENSLGSARHAYYVTV EAPYWLQKPQSH LYGPGETARLDCQVQGRPQPEITWRINGMSMETVNKDQKYRIEQGSLILSNVQ PTDTMVTQCEARNQHGLLLANAYIYVVQLPARILTKDNQTYMAVEGSTAYLLC KAFGAPVPSVQWLDEEGTTVLQDERFFPYANGTLSIRD LQANDTGRYFCQAA NDQNNVTILANLQVKEATQITQGPRSAIEKKGARVTF TCQASFDPSLQASITWR GDGRDLQERGDSDKYFIEDGKLVIQSLDYS DQGNYSVASTELDEVESRAQLL VVGSPGPVPHLELSDRHLLKQSQVHLSWSPAEDHNSPIEKYDIEFEDKEMAPE KWFSLGKVPGNQTSTTLKLSPYVHYTFRVTAINKYGPGEPSVSES VVTPEAA PEKNPVDVRGEGNETNMMVITWKPLRWMDWNAPQIQYRVQWRPQGKQETW RKQTVSDPFLVVSNTSTFVPYEIKVQAVNNQGGKGP EPQVTIGYSGEDYPQVSP ELEDITIFNSSTVLVRWRPVDLAQVKGHLKGYNVTYWWKGSQRKHSKRHIHKS HIVVPANTTSAILSGLRPYSSYHVEVQAFNGRGLGPASEWTFSTPEGVPGHPE ALHLECQSDTSLLLHWQPPLSHNGVLTGYLLSYHPVEGESKEQLFFNLSDPEL RTHNLTNLNPDLQYRFQLQATTQQGGPGEAIVREGGTMALFGKPDFGNISATA GENYSVVSWSVPRKGGQCNFRFHILFKALPEGKVSPDHQPQPQYVSYNQSSYT QWNLQPDTKYEIHLIKEKVLLHHLVDVKTNGTGPVRVSTTG SFASE
Source	Mammalian cell



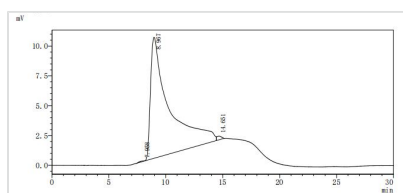
Target Names	L1cam
Expression Region	20-1123aa
Notes	Repeated freezing and thawing is not recommended. Store working aliquots at 4°C for up to one week.
Tag Info	C-terminal 10xHis-tagged
Mol. Weight	125.4 kDa
Protein Length	Partial

Image


(Tris-Glycine gel) Discontinuous SDS-PAGE (reduced) with 5% enrichment gel and 15% separation gel.



Activity
Measured by its binding ability in a functional ELISA. Immobilized Mouse L1cam at 2 µg/ml can bind Anti-L1CAM recombinant antibody(CSB-RA012704MA1HU). The EC₅₀ is 1.827-2.141 ng/mL.



The purity of L1cam was greater than 95% as determined by SEC-HPLC

Endotoxin	Less than 1.0 EU/ug as determined by LAL method.
Reconstitution	We recommend that this vial be briefly centrifuged prior to opening to bring the contents to the bottom. Please reconstitute protein in deionized sterile water to a concentration of 0.1-1.0 mg/mL. We recommend to add 5-50% of glycerol (final concentration) and aliquot for long-term storage at -20°C/-80°C. Our default final concentration of glycerol is 50%. Customers could use it as reference.
Shelf Life	The shelf life is related to many factors, storage state, buffer ingredients, storage temperature and the stability of the protein itself. Generally, the shelf life of liquid form is 6 months at -20°C/-80°C. The shelf life of lyophilized form is 12 months at -20°C/-80°C.