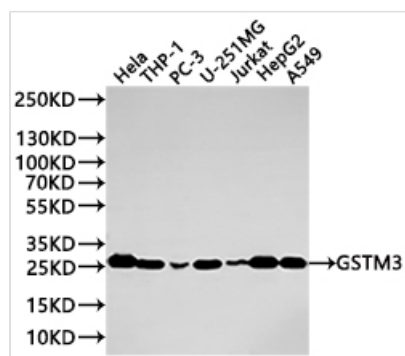




GSTM3 Recombinant Monoclonal Antibody

Product Code	CSB-RA009982MA1HU
Storage	Upon receipt, store at -20°C or -80°C. Avoid repeated freeze.
Uniprot No.	P21266
Immunogen	Recombinant Human GSTM3 protein
Species Reactivity	Human, Mouse, Rat
Tested Applications	ELISA, WB, IHC, FC; Recommended dilution: WB:1:500-1:2000, IHC:1:50-1:200, FC:1:50-1:200
Form	Liquid
Conjugate	Non-conjugated
Storage Buffer	Preservative: 0.03% Proclin 300 Constituents: 50% Glycerol, 0.01M PBS, PH 7.4
Purification Method	Affinity-chromatography
Isotype	hIgG1
Clonality	Monoclonal
Product Type	Recombinant Antibody
Immunogen Species	Homo sapiens (Human)
Target Names	GSTM3
Clone No.	2H9D7

Image



Western Blot

Positive WB detected in: HeLa whole cell lysate(20µg), THP-1 whole cell lysate(20µg), PC-3 whole cell lysate(20µg), U-251MG whole cell lysate(20µg), Jurkat whole cell lysate(20µg), HepG2 whole cell lysate(20µg), A549 whole cell lysate(20µg)

All lanes: GSTM3 antibody at 1:1000

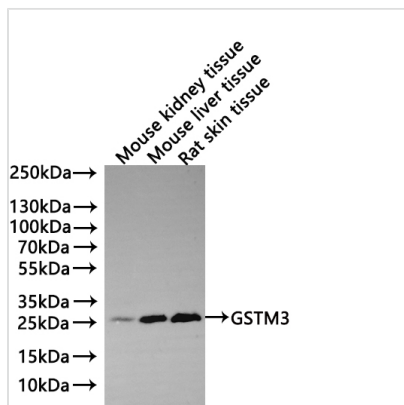
Secondary

Goat polyclonal to human IgG at 1/40000 dilution

Predicted band size: 27 kDa

Observed band size: 27 kDa

Exposure time?2min



Western Blot

Positive WB detected in: Mouse kidney tissue lysate(20µg), Mouse liver tissue lysate(20µg), Rat skin tissue lysate(20µg)

All lanes: GSTM3 antibody at 1:1000

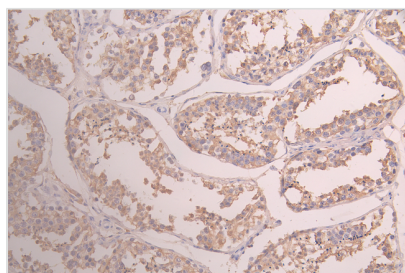
Secondary

Goat polyclonal to human IgG at 1/40000 dilution

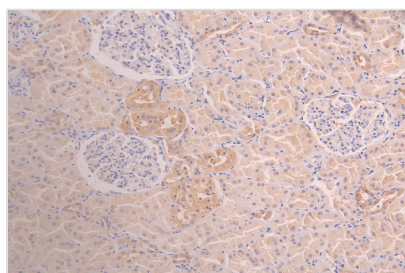
Predicted band size: 26.6 kDa

Observed band size: 27 kDa

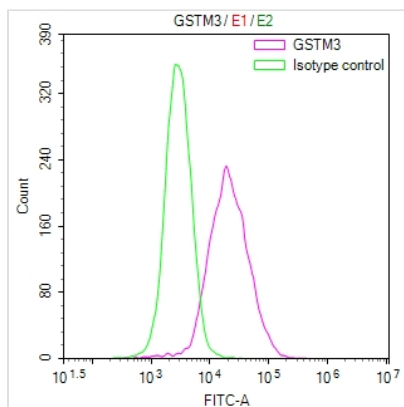
Exposure time: 2min



IHC image of CSB-RA009982MA1HU diluted at 1?100 and staining in paraffin-embedded human testis tissue performed on a Leica BondTM system. After dewaxing and hydration, antigen retrieval was mediated by high pressure in a citrate buffer (pH 6.0). Section was blocked with 10% normal goat serum 30min at RT. Then primary antibody (1% BSA) was incubated at 4°C overnight. The primary is detected by a Goat anti-human polymer IgG labeled by HRP and visualized using 0.05% DAB.



IHC image of CSB-RA009982MA1HU diluted at 1?100 and staining in paraffin-embedded human kidney tissue performed on a Leica BondTM system. After dewaxing and hydration, antigen retrieval was mediated by high pressure in a citrate buffer (pH 6.0). Section was blocked with 10% normal goat serum 30min at RT. Then primary antibody (1% BSA) was incubated at 4°C overnight. The primary is detected by a Goat anti-human polymer IgG labeled by HRP and visualized using 0.05% DAB.



Overlay Peak curve showing MCF-7 cells stained with CSB-RA009982MA1HU (red line) at 1:100. The cells were fixed in 4% formaldehyde and permeated by 0.2% TritonX-100 for 10min. Then 10% normal goat serum to block non-specific protein-protein interactions followed by the antibody (1µg/1*10⁶cells) for 45min at 4?. The secondary antibody used was Fluorescein (FITC) AffiniPure Goat Anti-Human IgG, Fcγ fragment specific at 1:200 dilution for 35min at 4?. Control antibody (green line) was human IgG1 (1µg/1*10⁶cells) used under the same conditions. Acquisition of >10,000 events was performed.

Usage

For Research Use Only. Not for use in diagnostic or therapeutic procedures.