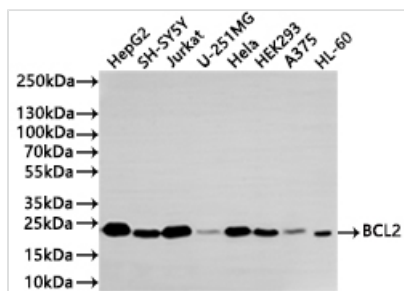




BCL2 Recombinant Monoclonal Antibody

Product Code	CSB-RA002611MA1HU
Storage	Upon receipt, store at -20°C or -80°C. Avoid repeated freeze.
Uniprot No.	P10415
Immunogen	Recombinant Human BCL2 protein
Species Reactivity	Human, Mouse, Rat
Tested Applications	ELISA, WB; Recommended dilution: WB:1:500-1:2000
Form	Liquid
Conjugate	Non-conjugated
Storage Buffer	Preservative: 0.03% Proclin 300 Constituents: 50% Glycerol, 0.01M PBS, PH 7.4
Purification Method	Affinity-chromatography
Isotype	hIgG1
Clonality	Monoclonal
Product Type	Recombinant Antibody
Immunogen Species	Homo sapiens (Human)
Target Names	BCL2
Clone No.	8E1D8

Image



Western Blot

Positive WB detected in: HepG2 whole cell lysate(20µg), SH-SY5Y whole cell lysate(20µg), Jurkat whole cell lysate(20µg), U-251MG whole cell lysate(20µg), HeLa whole cell lysate(20µg), HEK293 whole cell lysate(20µg), A375 whole cell lysate(20µg), HL-60 whole cell lysate(20µg)

All lanes: BCL2 antibody at 1:1000

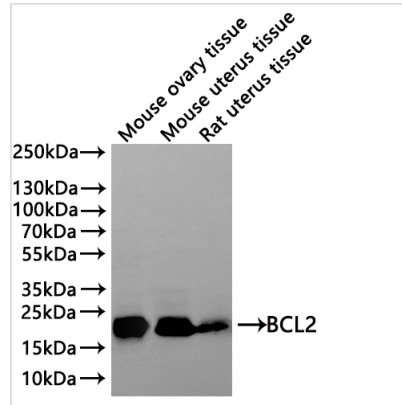
Secondary

Goat polyclonal to human IgG at 1/40000 dilution

Predicted band size: 26 kDa

Observed band size: 26 kDa

Exposure time?2min

**Western Blot**

Positive WB detected in: Mouse liver tissue lysate(20µg), Mouse Brain tissue lysate(20µg), Rat brain tissue lysate(20µg), Mouse lung tissue lysate(20µg)

All lanes: BCL2 antibody at 1:1000

Secondary

Goat polyclonal to human IgG at 1/40000 dilution

Predicted band size: 26.3 kDa

Observed band size: 26 kDa

Exposure time: 2min

Usage

For Research Use Only. Not for use in diagnostic or therapeutic procedures.