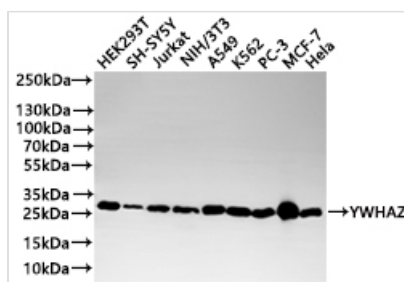




YWHAZ Recombinant Monoclonal Antibody

Product Code	CSB-RA026293MA1HU
Storage	Upon receipt, store at -20°C or -80°C. Avoid repeated freeze.
Uniprot No.	P63104
Immunogen	Recombinant Human YWHAZ protein
Species Reactivity	Human, Mouse, Rat
Tested Applications	ELISA, WB, IF, FC; Recommended dilution: WB:1:500-1:2000, IF:1:50-1:200, FC:1:50-1:200
Form	Liquid
Conjugate	Non-conjugated
Storage Buffer	Preservative: 0.03% Proclin 300 Constituents: 50% Glycerol, 0.01M PBS, PH 7.4
Purification Method	Affinity-chromatography
Isotype	hIgG1
Clonality	Monoclonal
Product Type	Recombinant Antibody
Immunogen Species	Homo sapiens (Human)
Target Names	YWHAZ
Clone No.	19G7E9

Image



Western Blot

Positive WB detected in: HEK293T whole cell lysate(20µg), SH-SY5Y whole cell lysate(20µg), Jurkat whole cell lysate(20µg), NIH/3T3 whole cell lysate(20µg), A549 whole cell lysate(20µg), K562 whole cell lysate(20µg), PC-3 whole cell lysate(20µg), MCF-7 whole cell lysate(20µg), HeLa whole cell lysate(20µg)

All lanes: YWHAZ antibody at 1:1000

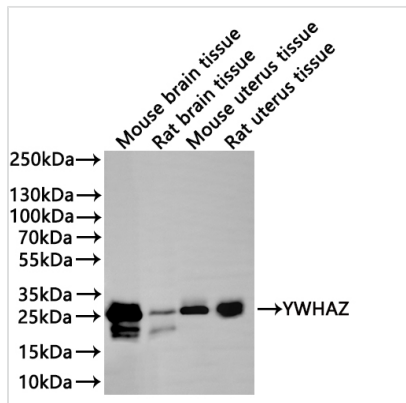
Secondary

Goat polyclonal to human IgG at 1/40000 dilution

Predicted band size: 28 kDa

Observed band size: 28 kDa

Exposure time?30s



Western Blot

Positive WB detected in: Mouse brain tissue lysate(20µg), Rat brain tissue lysate(20µg), Mouse uterus tissue lysate(20µg), Rat uterus tissue lysate(20µg)

All lanes: YWHAZ antibody at 1:1000

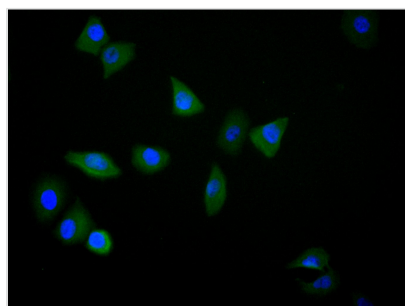
Secondary

Goat polyclonal to human IgG at 1/40000 dilution

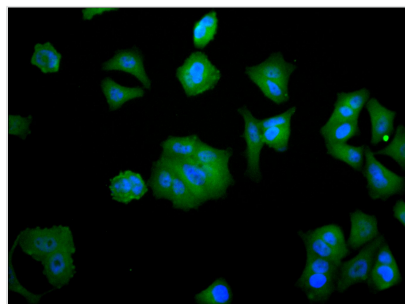
Predicted band size: 27.7 kDa

Observed band size: 28 kDa

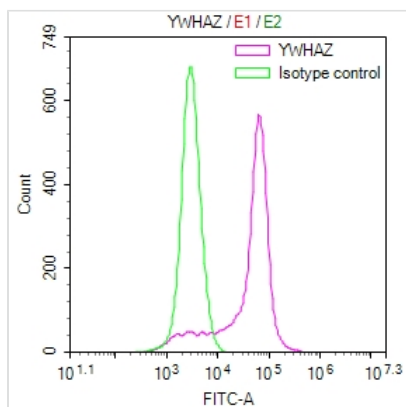
Exposure time: 2min



Immunofluorescence staining of HeLa cell with CSB-RA026293MA1HU at 1:30 counter-stained with DAPI. The cells were fixed in 4% formaldehyde, permeabilized using 0.2% Triton X-100 and blocked in 10% normal Goat Serum. The cells were then incubated with the antibody overnight at 4°C. The secondary antibody was Alexa Fluor 488-conjugated AffiniPure Goat Anti-Human IgG(H+L).



Immunofluorescence staining of MCF-7 cell with CSB-RA026293MA1HU at 1:30 counter-stained with DAPI. The cells were fixed in 4% formaldehyde, permeabilized using 0.2% Triton X-100 and blocked in 10% normal Goat Serum. The cells were then incubated with the antibody overnight at 4°C. The secondary antibody was Alexa Fluor 488-conjugated AffiniPure Goat Anti-Human IgG(H+L).



Overlay Peak curve showing A431 cells stained with CSB-RA026293MA1HU (red line) at 1:100. The cells were fixed in 4% formaldehyde and permeated by 0.2% TritonX-100 for 10min. Then 10% normal goat serum to block non-specific protein-protein interactions followed by the antibody (1ug/1*10⁶cells) for 45min at 4?. The secondary antibody used was Fluorescein (FITC) AffiniPure Goat Anti-Human IgG, Fcγ fragment specific at 1:200 dilution for 35min at 4?. Control antibody (green line) was human IgG1 (1ug/1*10⁶cells) used under the same conditions. Acquisition of >10,000 events was performed.

Usage

For Research Use Only. Not for use in diagnostic or therapeutic procedures.