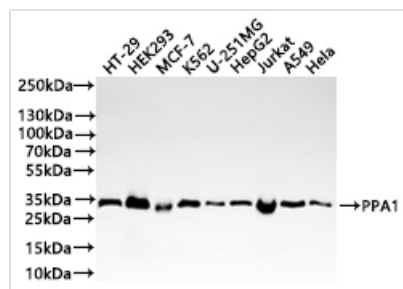




PPA1 Recombinant Monoclonal Antibody

Product Code	CSB-RA614884MA1HU
Storage	Upon receipt, store at -20°C or -80°C. Avoid repeated freeze.
Uniprot No.	Q15181
Immunogen	Recombinant Human PPA1 protein
Species Reactivity	Human, Mouse, Rat
Tested Applications	ELISA, WB, FC; Recommended dilution: WB:1:500-1:2000, FC:1:50-1:200
Form	Liquid
Conjugate	Non-conjugated
Storage Buffer	Preservative: 0.03% Proclin 300 Constituents: 50% Glycerol, 0.01M PBS, PH 7.4
Purification Method	Affinity-chromatography
Isotype	hIgG1
Clonality	Monoclonal
Product Type	Recombinant Antibody
Immunogen Species	Homo sapiens (Human)
Target Names	PPA1
Clone No.	1H4E1

Image

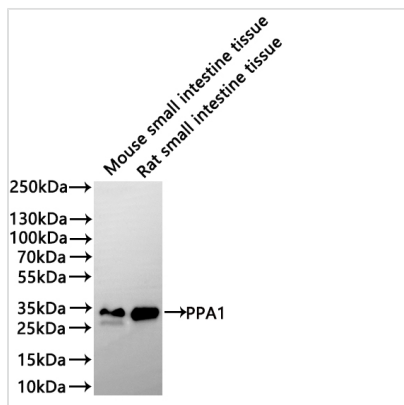


Western Blot

Positive WB detected in: HT-29 whole cell lysate(20µg), HEK293 whole cell lysate(20µg), MCF-7 whole cell lysate(20µg), K562 whole cell lysate(20µg), U-251MG whole cell lysate(20µg), HepG2 whole cell lysate(20µg), Jurkat whole cell lysate(20µg), A549 whole cell lysate(20µg), HeLa whole cell lysate(20µg)
All lanes: PPA1 antibody at 1:1000

Secondary

Goat polyclonal to human IgG at 1/40000 dilution
Predicted band size: 33 kDa
Observed band size: 33 kDa
Exposure time?5s


Western Blot

Positive WB detected in: Mouse small intestine tissue lysate(20µg), Rat small intestine tissue lysate(20µg)

All lanes: PPA1 antibody at 1:1000

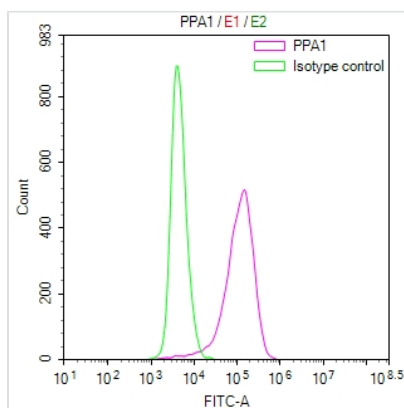
Secondary

Goat polyclonal to human IgG at 1/40000 dilution

Predicted band size: 32.7 kDa

Observed band size: 33 kDa

Exposure time: 2min



Overlay Peak curve showing HEK293 cells stained with CSB-RA614884MA1HU (red line) at 1:100. The cells were fixed in 4% formaldehyde and permeated by 0.2% TritonX-100 for 10min. Then 10% normal goat serum to block non-specific protein-protein interactions followed by the antibody (1µg/1*10⁶cells) for 45min at 4?. The secondary antibody used was Fluorescein (FITC) AffiniPure Goat Anti-Human IgG, Fcγ fragment specific at 1:200 dilution for 35min at 4?. Control antibody (green line) was human IgG1 (1µg/1*10⁶cells) used under the same conditions. Acquisition of >10,000 events was performed.

Usage

For Research Use Only. Not for use in diagnostic or therapeutic procedures.