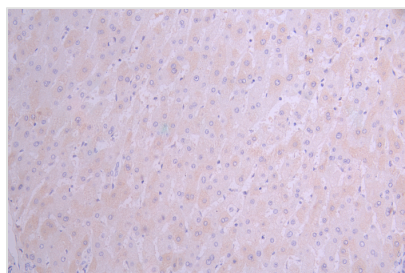




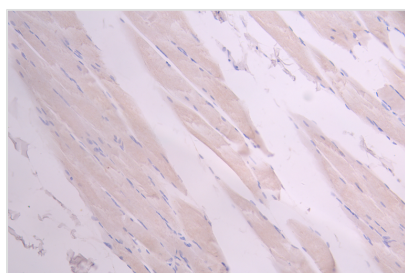
# TTN Recombinant Monoclonal Antibody

|                            |  |
|----------------------------|--|
| <b>Product Code</b>        | CSB-RA025267MA1HU  |
| <b>Storage</b>             | Upon receipt, store at -20°C or -80°C. Avoid repeated freeze.                    |
| <b>Uniprot No.</b>         | Q8WZ42   |
| <b>Immunogen</b>           | Recombinant Human TTN protein  |
| <b>Species Reactivity</b>  | Human  |
| <b>Tested Applications</b> | ELISA, IHC; Recommended dilution: IHC:1:50-1:200                                 |
| <b>Form</b>                | Liquid   |
| <b>Conjugate</b>           | Non-conjugated   |
| <b>Storage Buffer</b>      | Preservative: 0.03% Proclin 300<br>Constituents: 50% Glycerol, 0.01M PBS, PH 7.4 |
| <b>Purification Method</b> | Affinity-chromatography  |
| <b>Isotype</b>             | hIgG1  |
| <b>Clonality</b>           | Monoclonal   |
| <b>Product Type</b>        | Recombinant Antibody   |
| <b>Immunogen Species</b>   | Homo sapiens (Human)   |
| <b>Target Names</b>        | TTN  |
| <b>Clone No.</b>           | 12D11  |

## Image



IHC image of CSB-RA025267MA1HU diluted at 1:50 and staining in paraffin-embedded human liver cancer performed on a Leica Bond<sup>TM</sup> system. After dewaxing and hydration, antigen retrieval was mediated by high pressure in a citrate buffer (pH 6.0). Section was blocked with 10% normal goat serum 30min at RT. Then primary antibody (1% BSA) was incubated at 4°C overnight. The primary is detected by a Anti-Human IgG, Fcy Fragment Specific labeled by HRP and visualized using 0.05% DAB.



IHC image of CSB-RA025267MA1HU diluted at 1:50 and staining in paraffin-embedded human skeletal muscle tissue performed on a Leica Bond<sup>TM</sup> system. After dewaxing and hydration, antigen retrieval was mediated by high pressure in a citrate buffer (pH 6.0). Section was blocked with 10% normal goat serum 30min at RT. Then primary antibody (1% BSA) was incubated at 4°C overnight. The primary is detected by a Anti-Human IgG, Fcy Fragment Specific labeled by HRP and visualized using 0.05% DAB.



---

**Usage**

For Research Use Only. Not for use in diagnostic or therapeutic procedures.