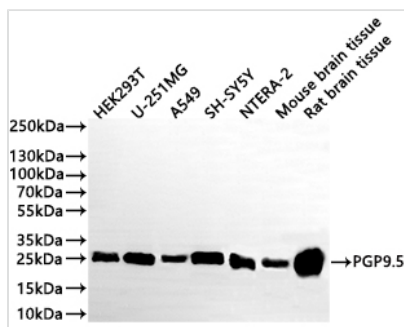




# UCHL1 Recombinant Monoclonal Antibody

<b>Product Code</b>	CSB-RA261594A0HU
<b>Storage</b>	Upon receipt, store at -20°C or -80°C. Avoid repeated freeze.
<b>Uniprot No.</b>	P09936
<b>Immunogen</b>	A synthesized peptide derived from human UCHL1
<b>Species Reactivity</b>	Human, Mouse, Rat
<b>Tested Applications</b>	ELISA, WB, IHC; Recommended dilution: WB:1:500-1:2000, IHC:1:50-1:200
<b>Form</b>	Liquid
<b>Conjugate</b>	Non-conjugated
<b>Storage Buffer</b>	Rabbit IgG in 10mM phosphate buffered saline , pH 7.4, 150mM sodium chloride, 0.05% BSA, 0.02% sodium azide and 50% glycerol.
<b>Purification Method</b>	Affinity-chromatography
<b>Isotype</b>	Rabbit IgG
<b>Clonality</b>	Monoclonal
<b>Product Type</b>	Recombinant Antibody
<b>Immunogen Species</b>	Homo sapiens (Human)
<b>Target Names</b>	UCHL1
<b>Clone No.</b>	13A5

## Image



### Western Blot

Positive WB detected in: HEK293T whole cell lysate(20µg), U-251MG whole cell lysate(20µg),A549 whole cell lysate(20µg),SH-SY5Y whole cell lysate(20µg),NTERA-2 whole cell lysate(20µg), Mouse brain tissue lysate(20µg), Rat brain tissue lysate(20µg)

All lanes: PGP9.5 antibody at 1:1000

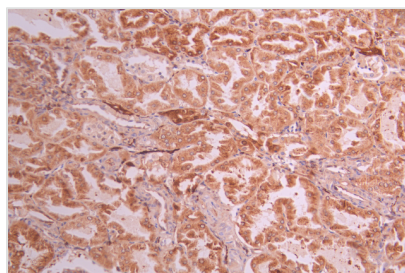
### Secondary

Goat polyclonal to rabbit IgG at 1/40000 dilution

Predicted band size: 25 kDa

Observed band size: 26 kDa

Exposure time?50s



IHC image of CSB-RA261594A0HU diluted at 1:100 and staining in paraffin-embedded human kidney tissue performed on a Leica BondTM system. After dewaxing and hydration, antigen retrieval was mediated by high pressure in a citrate buffer (pH 6.0). Section was blocked with 10% normal goat serum 30min at RT. Then primary antibody (1% BSA) was incubated at 4°C overnight. The primary is detected by a Goat anti-rabbit polymer IgG labeled by HRP and visualized using 0.05% DAB.



---

**Usage**

For Research Use Only. Not for use in diagnostic or therapeutic procedures.