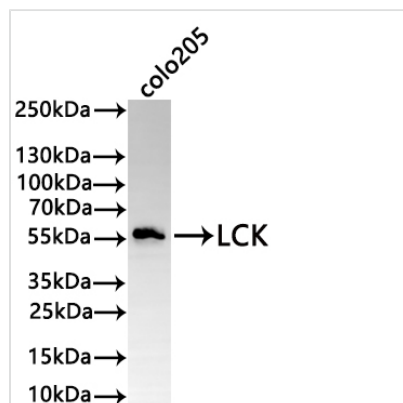




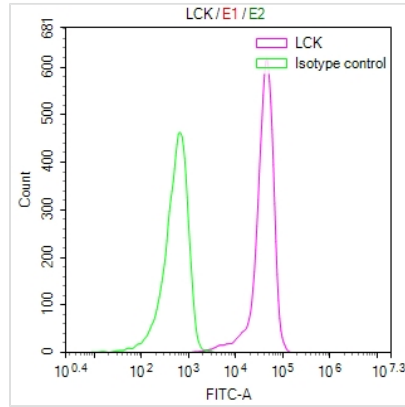
LCK Recombinant Monoclonal Antibody

| | |
|----------------------------|---|
| Product Code | CSB-RA583933A0HU |
| Storage | Upon receipt, store at -20°C or -80°C. Avoid repeated freeze. |
| Uniprot No. | P06239 |
| Immunogen | A synthesized peptide derived from human LCK |
| Species Reactivity | Human |
| Tested Applications | ELISA, WB, FC; Recommended dilution: WB:1:500-1:2000, FC:1:50-1:200 |
| Form | Liquid |
| Conjugate | Non-conjugated |
| Storage Buffer | Rabbit IgG in 10mM phosphate buffered saline , pH 7.4, 150mM sodium chloride, 0.05% BSA, 0.02% sodium azide and 50% glycerol. |
| Purification Method | Affinity-chromatography |
| Isotype | Rabbit IgG |
| Clonality | Monoclonal |
| Product Type | Recombinant Antibody |
| Immunogen Species | Homo sapiens (Human) |
| Target Names | LCK |
| Clone No. | 3D6 |

Image



Western Blot
 Positive WB detected in: COLO205 whole cell lysate(30µg)
 All lanes: LCK antibody at 1:1000
 Secondary
 Goat polyclonal to rabbit IgG at 1/50000 dilution
 Predicted band size: 58 kDa
 Observed band size: 58 kDa
 Exposure time: 2min



Overlay Peak curve showing jurkat cells stained with CSB-RA583933A0HU (red line) at 1:100. The cells were fixed in 4% formaldehyde and permeated by 0.2% TritonX-100 for 10min. Then 10% normal goat serum to block non-specific protein-protein interactions followed by the antibody (1ug/1*10⁶cells) for 45min at 4?. The secondary antibody used was FITC-conjugated goat anti-rabbit IgG (H+L) at 1/200 dilution for 35min at 4?. Control antibody (green line) was Rabbit IgG (1ug/1*10⁶cells) used under the same conditions. Acquisition of >10,000 events was performed.

Usage

For Research Use Only. Not for use in diagnostic or therapeutic procedures.