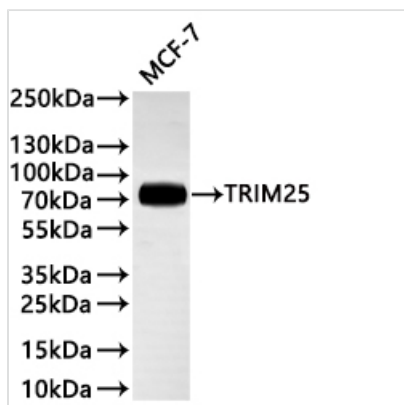




TRIM25 Recombinant Monoclonal Antibody

| | |
|----------------------------|-------------------------------------------------------------------------------------------------------------------------------|
| Product Code | CSB-RA090616A0HU |
| Storage | Upon receipt, store at -20°C or -80°C. Avoid repeated freeze. |
| Uniprot No. | Q14258 |
| Immunogen | A synthesized peptide derived from human TRIM25 |
| Species Reactivity | Human |
| Tested Applications | ELISA, WB, FC; Recommended dilution: WB:1:500-1:2000, FC:1:50-1:200 |
| Form | Liquid |
| Conjugate | Non-conjugated |
| Storage Buffer | Rabbit IgG in 10mM phosphate buffered saline , pH 7.4, 150mM sodium chloride, 0.05% BSA, 0.02% sodium azide and 50% glycerol. |
| Purification Method | Affinity-chromatography |
| Isotype | Rabbit IgG |
| Clonality | Monoclonal |
| Product Type | Recombinant Antibody |
| Immunogen Species | Homo sapiens (Human) |
| Target Names | TRIM25 |
| Clone No. | 7E8 |

Image



Western Blot

Positive WB detected in: MCF-7 whole cell lysate(30µg)

All lanes: TRIM25 antibody at 1:1000

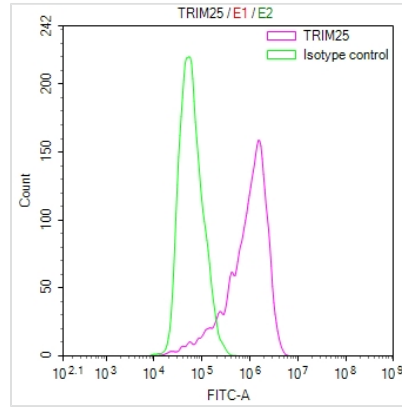
Secondary

Goat polyclonal to rabbit IgG at 1/40000 dilution

Predicted band size: 71 kDa

Observed band size: 71 kDa

Exposure time?20s



Overlay Peak curve showing BxPC-3 cells stained with CSB-RA090616A0HU (red line) at 1:100. The cells were fixed in 4% formaldehyde and permeated by 0.2% TritonX-100 for 10min. Then 10% normal goat serum to block non-specific protein-protein interactions followed by the antibody (1ug/1*10⁶cells) for 45min at 4?. The secondary antibody used was FITC-conjugated goat anti-rabbit IgG (H+L) at 1/200 dilution for 35min at 4?. Control antibody (green line) was Rabbit IgG (1ug/1*10⁶cells) used under the same conditions. Acquisition of >10,000 events was performed.

Usage

For Research Use Only. Not for use in diagnostic or therapeutic procedures.