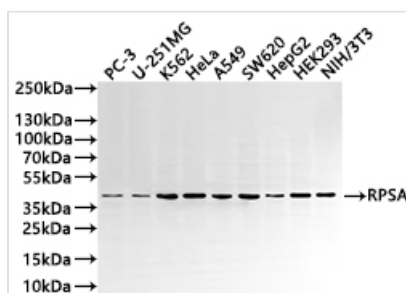




RPSA Recombinant Monoclonal Antibody

| | |
|----------------------------|---|
| Product Code | CSB-RA164048A0HU |
| Storage | Upon receipt, store at -20°C or -80°C. Avoid repeated freeze. |
| Uniprot No. | P08865 |
| Immunogen | A synthesized peptide derived from human RPSA |
| Species Reactivity | Human, Mouse |
| Tested Applications | ELISA, WB, IF, FC; Recommended dilution: WB:1:500-1:2000, IF:1:50-1:200, FC:1:50-1:200 |
| Form | Liquid |
| Conjugate | Non-conjugated |
| Storage Buffer | Rabbit IgG in 10mM phosphate buffered saline , pH 7.4, 150mM sodium chloride, 0.05% BSA, 0.02% sodium azide and 50% glycerol. |
| Purification Method | Affinity-chromatography |
| Isotype | Rabbit IgG |
| Clonality | Monoclonal |
| Product Type | Recombinant Antibody |
| Immunogen Species | Homo sapiens (Human) |
| Target Names | RPSA |
| Clone No. | 8D9 |

Image

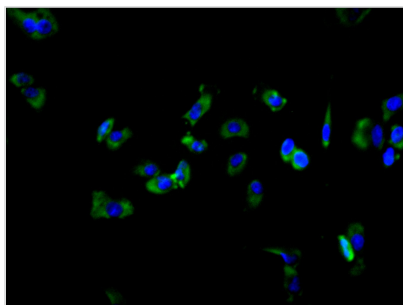


Western Blot

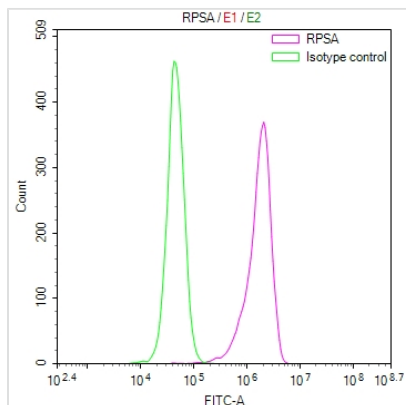
Positive WB detected in: PC-3 whole cell lysate(30µg), U-251MG whole cell lysate(30µg), K562 whole cell lysate(30µg), HeLa whole cell lysate(30µg), A549 whole cell lysate(30µg), SW620 whole cell lysate(30µg), HepG2 whole cell lysate(30µg), HEK293 whole cell lysate(30µg), NIH/3T3 whole cell lysate(30µg)
All lanes: RPSA antibody at 1:1000

Secondary

Goat polyclonal to rabbit IgG at 1/50000 dilution
Predicted band size: 33 kDa
Observed band size: 42 kDa
Exposure time: 1min



Immunofluorescence staining of HepG2 cell with CSB-RA164048A0HU at 1:50, counter-stained with DAPI. The cells were fixed in 4% formaldehyde and blocked in 10% normal Goat Serum. The cells were then incubated with the antibody overnight at 4°C. The secondary antibody was Alexa Fluor 488-conjugated AffiniPure Goat Anti-Rabbit IgG(H+L).



Overlay Peak curve showing MCF-7 cells stained with CSB-RA164048A0HU (red line) at 1:100. The cells were fixed in 4% formaldehyde and permeated by 0.2% TritonX-100 for 10min. Then 10% normal goat serum to block non-specific protein-protein interactions followed by the antibody (1ug/1*10⁶cells) for 45min at 4?. The secondary antibody used was FITC-conjugated goat anti-rabbit IgG (H+L) at 1/200 dilution for 35min at 4?. Control antibody (green line) was Rabbit IgG (1ug/1*10⁶cells) used under the same conditions. Acquisition of >10,000 events was performed.

Usage

For Research Use Only. Not for use in diagnostic or therapeutic procedures.