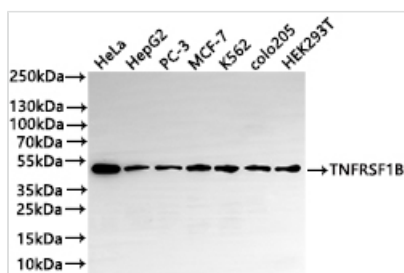




# TNFRSF1B Recombinant Monoclonal Antibody

|                            |   |
|----------------------------|---|
| <b>Product Code</b>        | CSB-RA159920A0HU  |
| <b>Storage</b>             | Upon receipt, store at -20°C or -80°C. Avoid repeated freeze.   |
| <b>Uniprot No.</b>         | P20333  |
| <b>Immunogen</b>           | A synthesized peptide derived from human TNFRSF1B   |
| <b>Species Reactivity</b>  | Human   |
| <b>Tested Applications</b> | ELISA, WB, IF, FC; Recommended dilution: WB:1:500-1:2000, IF:1:50-1:200, FC:1:50-1:200  |
| <b>Form</b>                | Liquid  |
| <b>Conjugate</b>           | Non-conjugated  |
| <b>Storage Buffer</b>      | Rabbit IgG in 10mM phosphate buffered saline , pH 7.4, 150mM sodium chloride, 0.05% BSA, 0.02% sodium azide and 50% glycerol. |
| <b>Purification Method</b> | Affinity-chromatography   |
| <b>Isotype</b>             | Rabbit IgG  |
| <b>Clonality</b>           | Monoclonal  |
| <b>Product Type</b>        | Recombinant Antibody  |
| <b>Immunogen Species</b>   | Homo sapiens (Human)  |
| <b>Target Names</b>        | TNFRSF1B  |
| <b>Clone No.</b>           | 14C4  |

## Image



### Western Blot

Positive WB detected in: HeLa whole cell lysate(30µg), HepG2 whole cell lysate(30µg), PC-3 whole cell lysate(30µg), MCF-7 whole cell lysate(30µg), K562 whole cell lysate(30µg), COLO205 whole cell lysate(30µg), HEK293T whole cell lysate(30µg)

All lanes: TNFRSF1B antibody at 1:1000

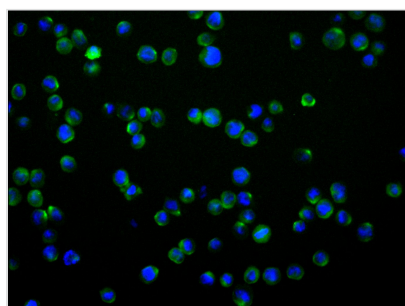
### Secondary

Goat polyclonal to rabbit IgG at 1/50000 dilution

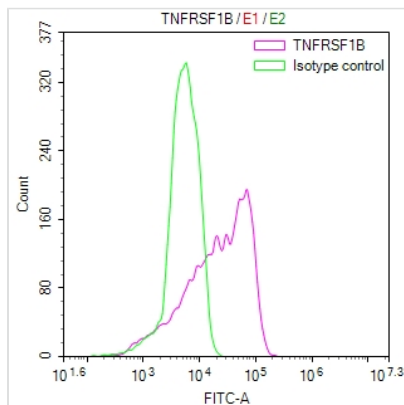
Predicted band size: 48 kDa

Observed band size: 48 kDa

Exposure time: 2min



Immunofluorescence staining of THP-1 cell with CSB-RA159920A0HU at 1:50, counter-stained with DAPI. The cells were fixed in 4% formaldehyde and blocked in 10% normal Goat Serum. The cells were then incubated with the antibody overnight at 4°C. The secondary antibody was Alexa Fluor 488-conjugated AffiniPure Goat Anti-Rabbit IgG(H+L).



Overlay Peak curve showing HT29 cells stained with CSB-RA159920A0HU (red line) at 1:100. Then 10% normal goat serum to block non-specific protein-protein interactions followed by the antibody ( $1\mu\text{g}/1*10^6\text{cells}$ ) for 45min at 4?. The secondary antibody used was FITC-conjugated goat anti-rabbit IgG (H+L) at 1/200 dilution for 35min at 4?. Control antibody (green line) was Rabbit IgG ( $1\mu\text{g}/1*10^6\text{cells}$ ) used under the same conditions. Acquisition of >10,000 events was performed.

## Usage

For Research Use Only. Not for use in diagnostic or therapeutic procedures.